

**SAWTOOTH**  
**ISOMETRIC VIEW "A"**

**PLEASE NOTE**

ALL DETAILS AS SHOWN ARE FOR REFERENCE ONLY AND SUBJECT TO CHANGE PER ACURLITE PROJECT PROPOSAL, SPECIFIC SITE CONDITIONS, ACURLITE P.E. ANALYSIS, AND GOVERNING CODE REQUIREMENTS.



**acurlite**  
Structural Skylights, Inc.

© NOV 30, 2017

570.759.6882 www.acurlite.com sales@acurlite.com

**STANDARD  
SYSTEM  
DETAILS**

SCALE:

N.T.S.

DRAWN BY:

K.A.M.

CHECKED BY:

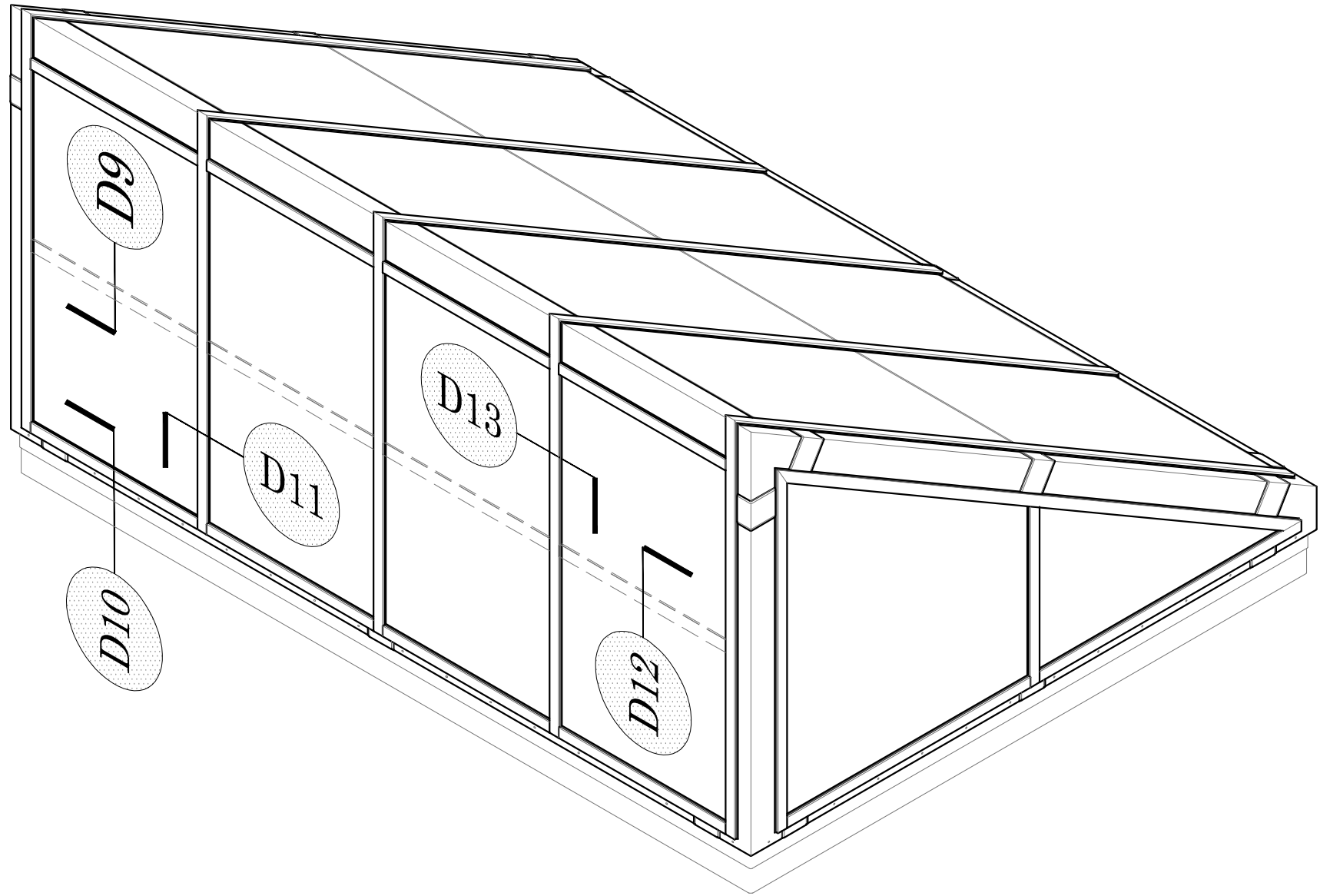
C.H.M.

DATE - ISSUE:

11/30/17 - A

SHEET:

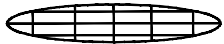
**SAMPLE**



**SAWTOOTH**  
**ISOMETRIC VIEW "B"**

PLEASE NOTE

ALL DETAILS AS SHOWN ARE FOR REFERENCE ONLY AND SUBJECT TO CHANGE PER ACURLITE PROJECT PROPOSAL, SPECIFIC SITE CONDITIONS, ACURLITE P.E. ANALYSIS, AND GOVERNING CODE REQUIREMENTS.



**acurlite**  
Structural Skylights, Inc.

© NOV 30, 2017

570.759.6882 www.acurlite.com sales@acurlite.com

STANDARD  
SYSTEM  
DETAILS

SCALE:

N.T.S.

DRAWN BY:

K.A.M.

CHECKED BY:

C.H.M.

DATE - ISSUE:

11/30/17 - A

SHEET:

**SAMPLE**

## OPTIONS FOR VISUAL ENHANCEMENT

**STANDARD & CUSTOM FINISHES**  
(Paint, Anodize & Powder Coat Available)

**SHADES/LOUVERS - PANELS - BIPV/DYNAMIC GLAZING**  
(Consult Factory For Your Project Specific Requirements)

**VARIABLE SLOPE - ALL PITCHES AVAILABLE**  
(Consult Factory - Based On Project Specific Conditions)

**INSULATED LAMINATED / LAMINATED GLAZING**  
**INCLUDES ALL BACKER ROD & GLAZING SEALANTS**  
(Max Unit Size & Required Thickness - Per AAMA Guidelines)  
(Glazing Calculations Provided For Additional Cost)

**EXTRUDED ALUM. COVER CAP & PRESSURE CAP W/ GASKET**

**ALUM. GLASS REST & SILICONE SETTING BLOCK**  
(Located At Quarter Points - 2 Per Bay)

**SILICONE GASKET**

**STRUCTURAL SEAL FLANGE - IF REQUIRED**  
(Factory Applied To Purlin - 1/4-20 x 3/4" Flat Head Screw)

**EXTRUDED ALUMINUM PURLIN**  
(2 1/2" Width - Depth/Reinforcement Per Acurlite P.E. Analysis)

**EXTRUDED ALUMINUM RAFTER**  
(2 1/2" Width - Depth/Reinforcement Per Acurlite P.E. Analysis)

## OPTIONS FOR THERMAL ENHANCEMENT

**DETAILS AS SHOWN ARE TYPICAL & FOR REFERENCE**  
(Consult Factory for Additional Modification & Performance Improvements)

**INSULATED CLOSURE - FOR ADDITIONAL COST**  
(Factory Assembly Includes Rigid Insulation & Formed Backer)

**MINERAL WOOL TO FILL VOIDS - FOR ADDITIONAL COST**  
(Standard Batt Type - Installer To Ensure System Weep Path Is NOT Blocked)

**SILL LUG**

(Lug Size, Type & Locations Per Acurlite P.E. Analysis)

**FORMED EXTERIOR CLOSURE - 1/16" ALUM. STANDARD**  
(Consult Factory For Optional Thickness & Materials)  
(Typical Splice Shown As Dashed Line - Locate As Required)

**FORMED SILL PAN - 1/16" ALUM. STANDARD**  
(Consult Factory For Optional Thickness & Materials)

**SPONGE GASKET - FACTORY APPLIED TO SILL PAN**  
(3/4" Void At System Weep As Required)

## CURB / SUBSTRUCTURE BY OTHERS

**DETAILS / MATERIALS PER CONTRACT DOCUMENTS**  
(Not By Acurlite - Provided By Others)

**ISOLATION/WATERPROOF MEMBRANE**  
(Not By Acurlite - Provided By Others)

**PROPER SUBSTRATE REQUIRED FOR ATTACHMENT**  
(Not By Acurlite - Provided By Others)

## INSTALLATION

**FASTENERS PROVIDED BY ACURLITE**  
(Fastener Size & Type Per Acurlite P.E. Analysis Unless Noted)

**INSTALL GLAZING PER INDUSTRY STANDARDS**  
(Follow GANA Guidelines & Acurlite Installation Manual)

**USE SPECIFIED DOW CORNING SILICONE**  
(Per Acurlite P.E. Analysis & Installation Manual)

**SNAP ON COVER CAP**  
(Not Required For Water Tightness)

**FASTEN PRESSURE CAP TO RAFTER & APPLY SEAL**

**BACKER ROD & CONTINUOUS SEAL**

**APPLY CONT. STRUCTURAL SEAL - IF REQUIRED**

**FASTEN EXTERIOR CLOSURE TO PURLIN / FLANGE**

**FASTEN PURLIN ASSEMBLY TO RAFTER**

**FASTEN EXTERIOR CLOSURE TO SILL PAN**  
(Use #10 x 1/2" Pan Head S.M.S. - Locate 12" O.C. Typical)

**FASTEN RAFTER ASSEMBLY TO LUGS - IF REQ.**

**FASTEN SILL LUG TO CURB**  
(Seal In & Around Lug & Fastener)

**FULL BEARING SHIM - IF REQUIRED**  
(1/4" Max. Shim Space Typical - Unless Noted Otherwise)  
(Not by Acurlite - Provided By Others)

**INSTALL SILL PAN IN BED OF SEALANT**

## PLEASE NOTE

**CURB MUST RESIST ALL LOADS/REACTIONS  
IMPOSED BY SKYLIGHT**  
(Reactions Provided By Acurlite P.E.)  
(Responsible E.O.R. to Verify and Approve)

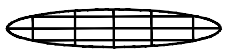
**CURB SHOULD BE PLUMB, LEVEL & SQUARE  
PER INDUSTRY STANDARD TOLERANCES**  
(Max Allowed  $\pm 1/8"$  PER 12' - 0" - Unless Noted Otherwise)  
(Not By Acurlite - Provided By Others)

**ALL ROOFING, TERMINATION BARS, REGLETS,  
COUNTER FLASHINGS & FLASHINGS NOT  
INTEGRAL TO SKYLIGHT SYSTEM FUNCTION**  
(Not By Acurlite - Provided By Others)

**D1** **SILL**  
**TYPICAL DETAIL**

## PLEASE NOTE

ALL DETAILS AS SHOWN ARE FOR REFERENCE  
ONLY AND SUBJECT TO CHANGE PER  
ACURLITE PROJECT PROPOSAL, SPECIFIC SITE  
CONDITIONS, ACURLITE P.E. ANALYSIS, AND  
GOVERNING CODE REQUIREMENTS.



**acurlite**  
**Structural Skylights, Inc.**

© NOV 30, 2017

570.759.6882 www.acurlite.com sales@acurlite.com

## STANDARD SYSTEM DETAILS

SCALE:  
**6" = 1' - 0"**

DRAWN BY:  
**K.A.M.**

CHECKED BY:  
**C.H.M.**

DATE - ISSUE:  
**11/30/17 - A**

SHEET:  
**D1**

OPTIONS FOR VISUAL ENHANCEMENT

STANDARD & CUSTOM FINISHES  
(Paint, Anodize & Powder Coat Available)

SHADES/LOUVERS - PANELS - BIPV/DYNAMIC GLAZING  
(Consult Factory For Your Project Specific Requirements)

VARIABLE SLOPE - ALL PITCHES AVAILABLE  
(Consult Factory - Based On Project Specific Conditions)

INSULATED LAMINATED / LAMINATED GLAZING  
INCLUDES ALL BACKER ROD & GLAZING SEALANTS  
(Max Unit Size & Required Thickness - Per AAMA Guidelines)  
(Glazing Calculations Can Be Provided For Additional Cost)

ALUM. GLASS REST & SILICONE SETTING BLOCK  
(Located At Quarter Points - 2 Per Bay)

STRUCTURAL SEAL FLANGE FASTENED TO PURLIN  
(Factory Applied To Purlin - 1/4-20 x 3/4" Flat Head Screw)

SILICONE GASKET

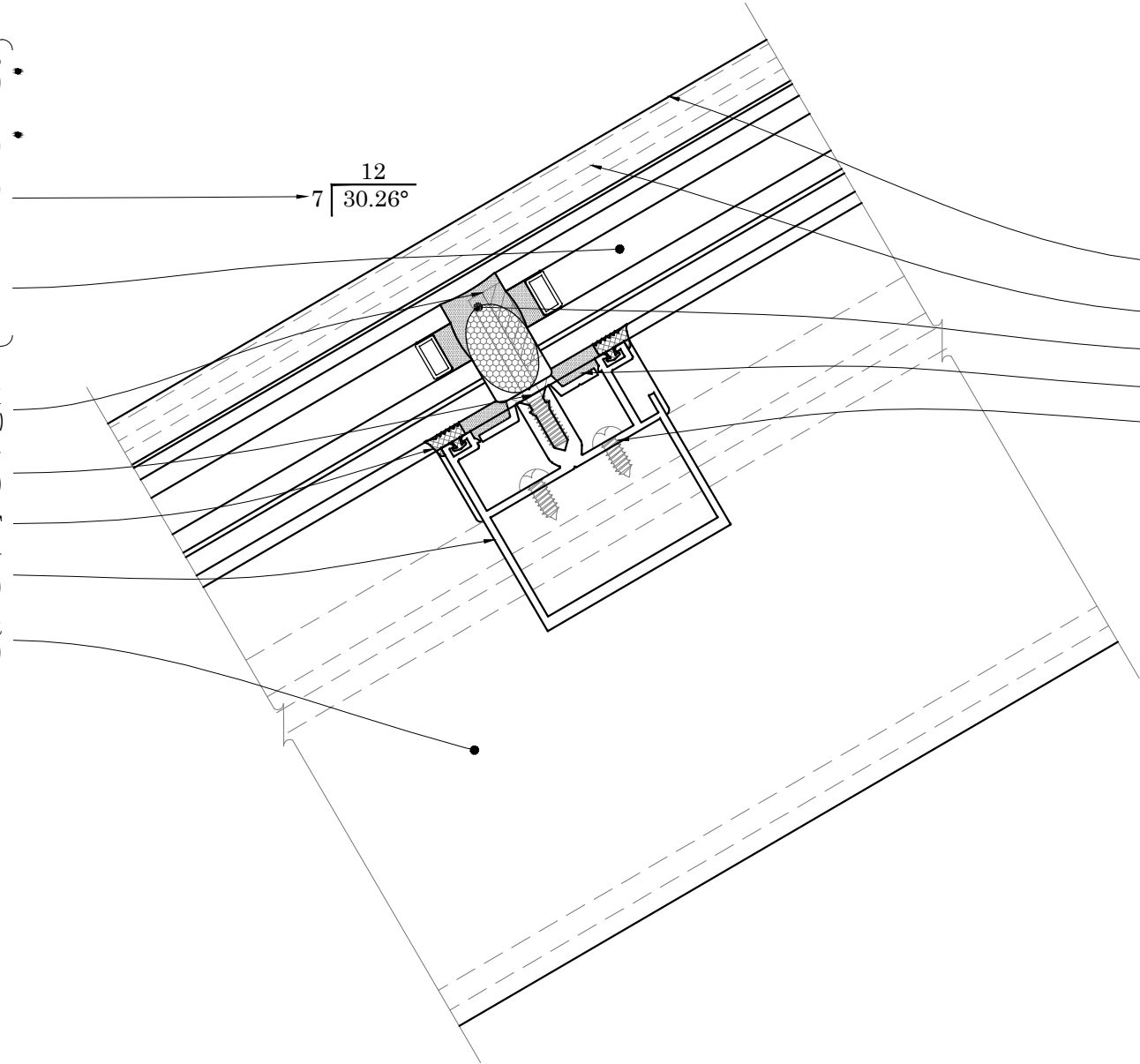
EXTRUDED ALUM. PURLIN  
(2 1/2" Width - Depth/Reinforcement Per Acurlite P.E. Analysis)

EXTRUDED ALUM. RAFTER  
(2 1/2" Width - Depth/Reinforcement Per Acurlite P.E. Analysis)

INSTALLATION

- FASTENERS PROVIDED BY ACURLITE  
(Fastener Size & Type Per Acurlite P.E. Analysis Unless Noted)
- INSTALL GLAZING PER INDUSTRY STANDARDS  
(Follow GANA Guidelines & Acurlite Installation Manual)
- USE SPECIFIED DOW CORNING SILICONE  
(Per Acurlite P.E. Analysis & Installation Manual)

- SNAP ON COVER CAP  
(Not Required For Water Tightness)
- FASTEN PRESSURE CAP TO RAFTER & APPLY SEAL
- BACKER ROD & CONTINUOUS SEAL
- APPLY CONT. STRUCTURAL SEAL - IF REQUIRED
- FASTEN PURLIN ASSEMBLY TO RAFTER



D2 PURLIN  
TYPICAL DETAIL

PLEASE NOTE

ALL DETAILS AS SHOWN ARE FOR REFERENCE  
ONLY AND SUBJECT TO CHANGE PER  
ACURLITE PROJECT PROPOSAL, SPECIFIC SITE  
CONDITIONS, ACURLITE P.E. ANALYSIS, AND  
GOVERNING CODE REQUIREMENTS.



acurlite  
Structural Skylights, Inc.  
www.acurlite.com sales@acurlite.com

© NOV 30, 2017

570.759.6882

STANDARD  
SYSTEM  
DETAILS

SCALE:  
6" = 1' - 0"

DRAWN BY:  
K.A.M.

CHECKED BY:  
C.H.M.

DATE - ISSUE:  
11/30/17 - A

SHEET:  
D2

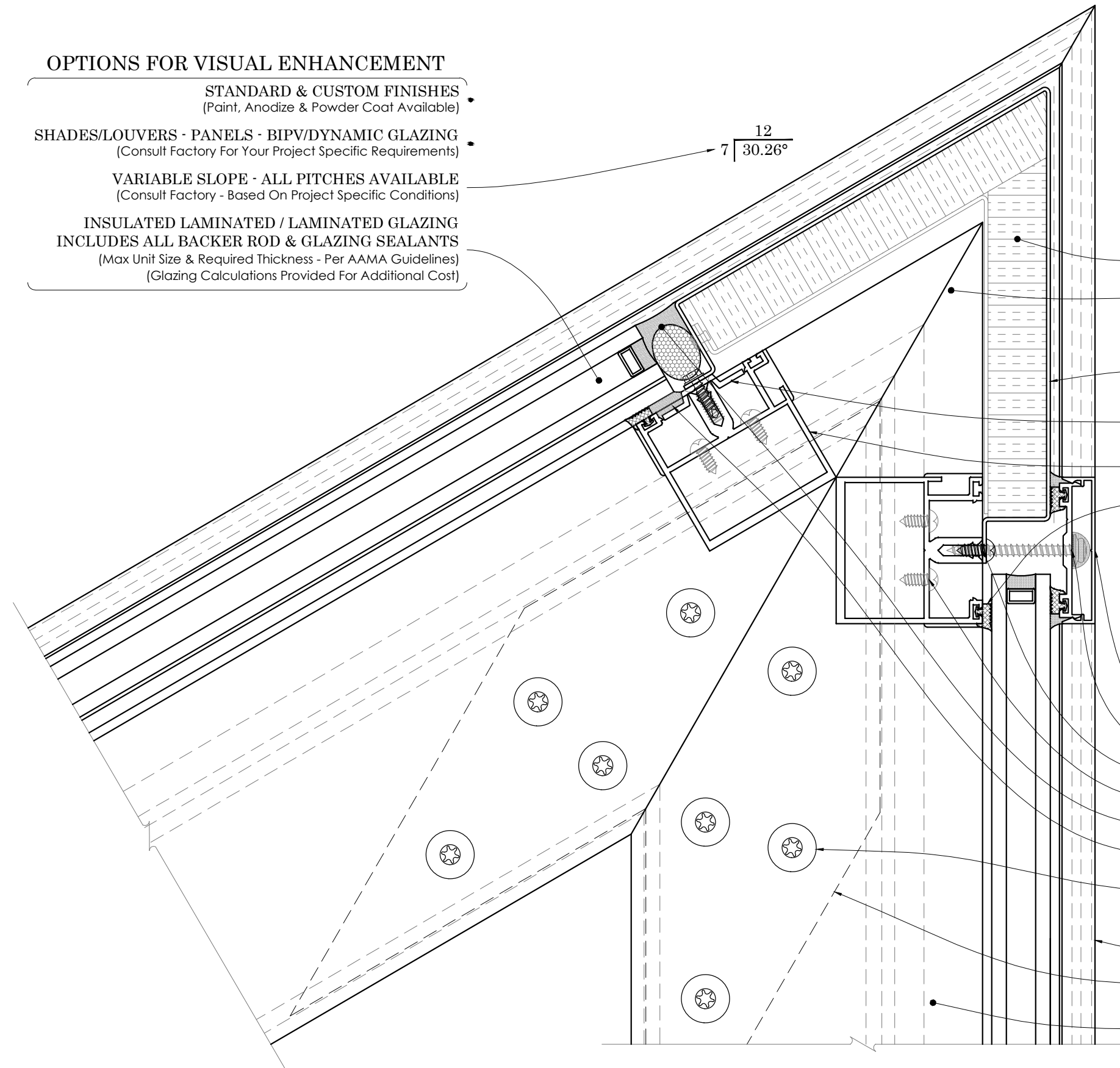
## OPTIONS FOR VISUAL ENHANCEMENT

STANDARD & CUSTOM FINISHES  
(Paint, Anodize & Powder Coat Available)

SHADES/LOUVERS - PANELS - BIPV/DYNAMIC GLAZING  
(Consult Factory For Your Project Specific Requirements)

VARIABLE SLOPE - ALL PITCHES AVAILABLE  
(Consult Factory - Based On Project Specific Conditions)

INSULATED LAMINATED / LAMINATED GLAZING  
INCLUDES ALL BACKER ROD & GLAZING SEALANTS  
(Max Unit Size & Required Thickness - Per AAMA Guidelines)  
(Glazing Calculations Provided For Additional Cost)



D3

RIDGE  
TYPICAL DETAIL

## OPTIONS FOR THERMAL ENHANCEMENT

DETAILS AS SHOWN ARE TYPICAL & FOR REFERENCE  
(Consult Factory for Additional Modification & Performance Improvements)

INSULATED CLOSURE - FOR ADDITIONAL COST  
(Factory Assembly Includes Rigid Insulation & Formed Backer)

MINERAL WOOL TO FILL VOIDS - FOR ADDITIONAL COST  
(Standard Batt Type - Installer To Ensure System Weep Path Is NOT Blocked)

FORMED EXTERIOR CLOSURE - 1/16" ALUM. STANDARD  
(Consult Factory For Optional Thickness & Materials)  
(Typical Splice Shown As Dashed Line - Locate As Required)

STRUCTURAL SEAL FLANGE - IF REQUIRED  
(Factory Applied To Purlin - 1/4-20 x 3/4" Flat Head Screw)

EXTRUDED ALUMINUM PURLIN  
(2 1/2" Width - Depth/Reinforcement Per Acurlite P.E. Analysis)

SILICONE GASKET

## INSTALLATION

FASTENERS PROVIDED BY ACURLITE  
(Fastener Size & Type Per Acurlite P.E. Analysis Unless Noted)

INSTALL GLAZING PER INDUSTRY STANDARDS  
(Follow GANA Guidelines & Acurlite Installation Manual)

USE SPECIFIED DOW CORNING SILICONE  
(Per Acurlite P.E. Analysis & Installation Manual)

SNAP ON COVER CAP  
(Not Required For Water Tightness)

FASTEN PRESSURE CAP TO RAFTER / PURLIN & APPLY SEAL

FASTEN EXTERIOR CLOSURE TO PURLIN / FLANGE

FASTEN PURLIN ASSEMBLIES TO RAFTER ASSEMBLY

BACKER ROD & CONTINUOUS SEAL

APPLY CONT. STRUCTURAL SEAL - IF REQUIRED

FASTEN RAFTER ASSEMBLIES TOGETHER - IF REQ.  
(Gusset Factory Applied to (1) Rafter Assembly Of Each Pair)

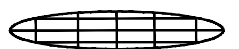
EXTRUDED ALUM. COVER CAP & PRESSURE CAP W/ GASKET

ALUMINUM GUSSET PLATES  
(Size, Thickness & Type Per Acurlite P.E. Analysis)

EXTRUDED ALUMINUM RAFTER  
(2 1/2" Width - Depth/Reinforcement Per Acurlite P.E. Analysis)

## PLEASE NOTE

ALL DETAILS AS SHOWN ARE FOR REFERENCE  
ONLY AND SUBJECT TO CHANGE PER  
ACURLITE PROJECT PROPOSAL, SPECIFIC SITE  
CONDITIONS, ACURLITE P.E. ANALYSIS, AND  
GOVERNING CODE REQUIREMENTS.



**acurlite**  
Structural Skylights, Inc.  
www.acurlite.com sales@acurlite.com

© NOV 30, 2017

570.759.6882

STANDARD  
SYSTEM  
DETAILS

SCALE:

6" = 1' - 0"

DRAWN BY:

K.A.M.

CHECKED BY:

C.H.M.

DATE - ISSUE:

11/30/17 - A

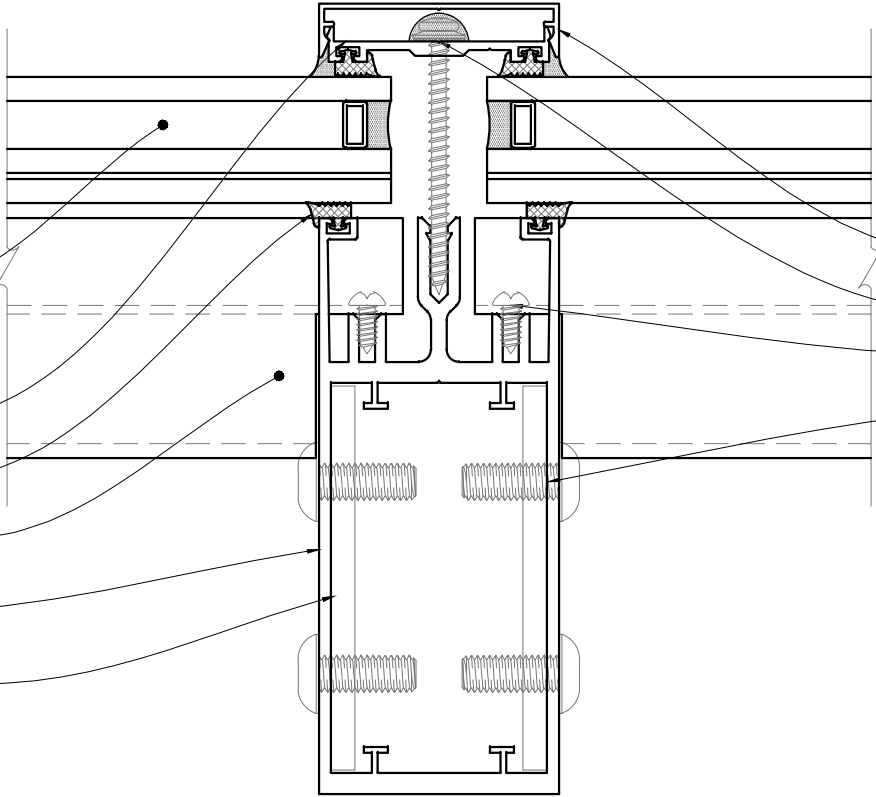
SHEET:

D3

OPTIONS FOR VISUAL ENHANCEMENT

- STANDARD & CUSTOM FINISHES  
(Paint, Anodize & Powder Coat Available)
- SHADES/LOUVERS - PANELS - BIPV/DYNAMIC GLAZING  
(Consult Factory for your project specific needs)
- VARIABLE SLOPE - ALL PITCHES AVAILABLE  
(Consult Factory - Based On Project Specific Conditions)
- INSULATED LAMINATED / LAMINATED GLAZING  
INCLUDES ALL BACKER ROD & GLAZING SEALANTS  
(Max Unit Size & Required Thickness - Per AAMA Guidelines)  
(Glazing Calculations Can Be Provided For Additional Cost)

- EXTRUDED ALUM. COVER CAP  
& PRESSURE CAP W/ GASKET
- SILICONE GASKET
- EXTRUDED ALUM. PURLIN  
(2 1/2" Width - Depth/Reinforcement Per Acurlite P.E. Analysis)
- EXTRUDED ALUM. RAFTER  
(2 1/2" Width - Depth/Reinforcement Per Acurlite P.E. Analysis)
- ALUM. GUSSET PLATES  
(Size & Type Per Acurlite P.E. Analysis)



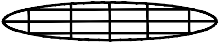
INSTALLATION

- FASTENERS PROVIDED BY ACURLITE  
(Fastener Size & Type Per Acurlite P.E. Analysis Unless Noted)
- INSTALL GLAZING PER INDUSTRY STANDARDS  
(Follow GANA Guidelines & Acurlite Installation Manual)
- USE SPECIFIED DOW CORNING SILICONE  
(Per Acurlite P.E. Analysis & Installation Manual)
- SNAP ON COVER CAP  
(Not Required for Water tightness)
- FASTEN PRESSURE CAP TO RAFTER & APPLY SEAL
- FASTEN PURLIN ASSEMBLY TO RAFTER
- FASTEN RAFTER ASSEMBLIES TOGETHER - IF REQ.  
(Gusset Factory Applied to (1) Rafter Assembly Of Each Pair)

D4 RAFTER  
TYPICAL DETAIL

PLEASE NOTE

ALL DETAILS AS SHOWN ARE FOR REFERENCE ONLY AND SUBJECT TO CHANGE PER ACURLITE PROJECT PROPOSAL, SPECIFIC SITE CONDITIONS, ACURLITE P.E. ANALYSIS, AND GOVERNING CODE REQUIREMENTS.



acurlite  
Structural Skylights, Inc.

© NOV 30, 2017

570.759.6882 www.acurlite.com sales@acurlite.com

STANDARD  
SYSTEM  
DETAILS

SCALE:  
6" = 1' - 0"

DRAWN BY:  
K.A.M.

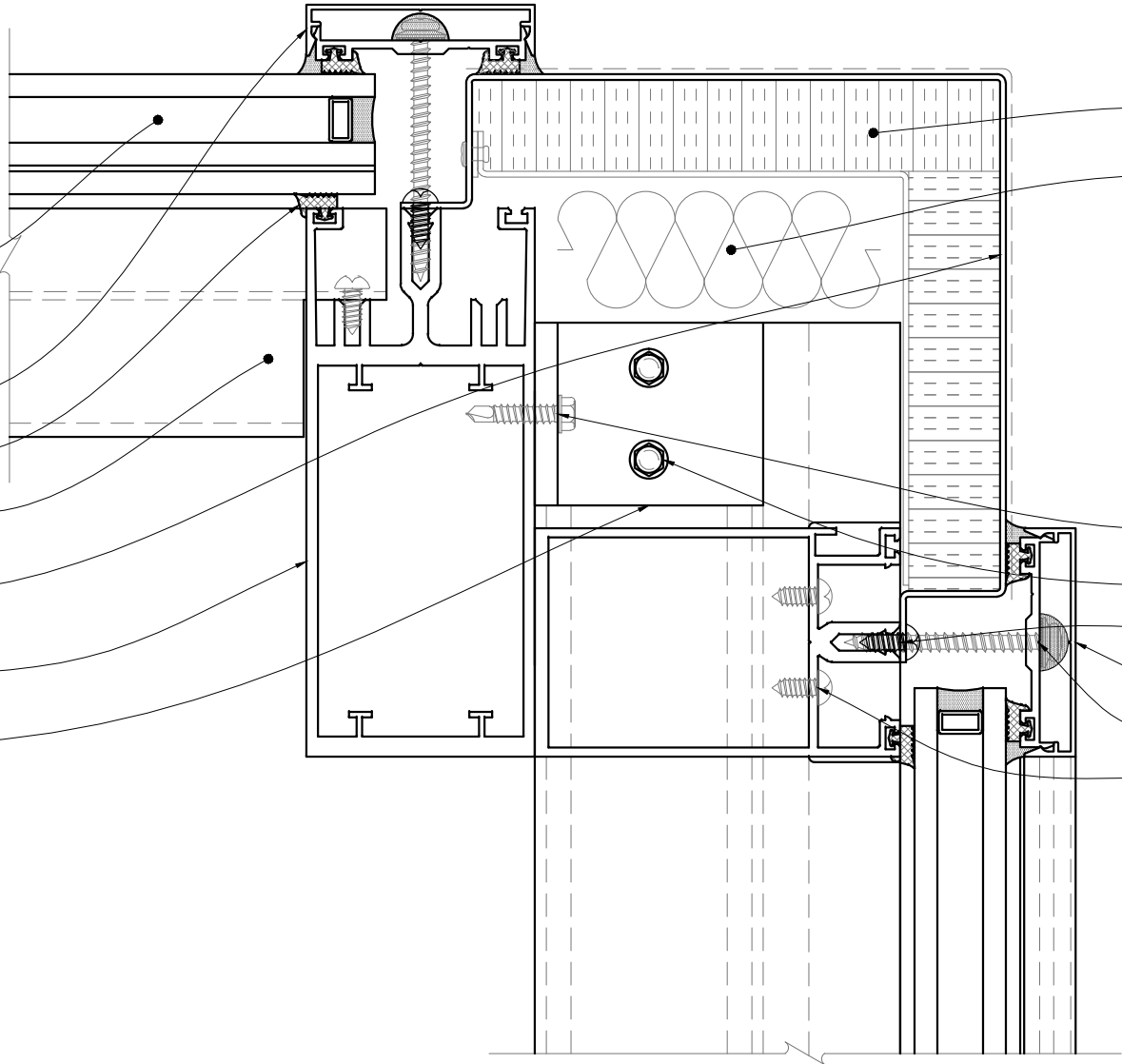
CHECKED BY:  
C.H.M.

DATE - ISSUE:  
11/30/17 - A

SHEET:  
D4

OPTIONS FOR VISUAL ENHANCEMENT

- STANDARD & CUSTOM FINISHES  
(Paint, Anodize & Powder Coat Available)
- SHADES/LOUVERS - PANELS - BIPV/DYNAMIC GLAZING  
(Consult Factory for your project specific needs)
- VARIABLE SLOPE - ALL PITCHES AVAILABLE  
(Consult Factory - Based On Project Specific Conditions)
- INSULATED LAMINATED / LAMINATED GLAZING  
INCLUDES ALL BACKER ROD & GLAZING SEALANTS  
(Max Unit Size & Required Thickness - Per AAMA Guidelines)  
(Glazing Calculations Can Be Provided For Additional Cost)
- EXTRUDED ALUM. COVER CAP  
& PRESSURE CAP W/ GASKET
- SILICONE GASKET
- EXTRUDED ALUM. PURLIN  
(2 1/2" Width - Depth/Reinforcement Per Acurlite P.E. Analysis)
- FORMED EXTERIOR CLOSURE - 1/16" ALUM. STANDARD  
(Consult Factory For Optional Thickness & Materials)  
(Typical Splice Shown As Dashed Line - Locate As Required)
- EXTRUDED ALUM. RAFTER  
(2 1/2" Width - Depth/Reinforcement Per Acurlite P.E. Analysis)
- GABLE HEAD LUG  
(Lug Size, Type & Locations Per Acurlite P.E. Analysis)



OPTIONS FOR THERMAL ENHANCEMENT

- DETAILS AS SHOWN ARE TYPICAL & FOR REFERENCE  
(Consult Factory for Additional Modification & Performance Improvements)
- INSULATED CLOSURE - FOR ADDITIONAL COST  
(Factory Assembly Includes Rigid Insulation & Formed Alum. Backer)
- MINERAL WOOL TO FILL VOIDS - FOR ADDITIONAL COST  
(Standard Batt Type - Installer To Ensure System Weep Path Is NOT Blocked)

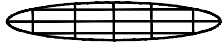
INSTALLATION

- FASTENERS PROVIDED BY ACURLITE  
(Fastener Size & Type Per Acurlite P.E. Analysis Unless Noted)
- INSTALL GLAZING PER INDUSTRY STANDARDS  
(Follow GANA Guidelines & Acurlite Installation Manual)
- USE SPECIFIED DOW CORNING SILICONE  
(Per Acurlite P.E. Analysis & Installation Manual)
- FASTEN HEAD LUG TO RAFTER  
(Seal In & Around Lug & Fastener)
- FASTEN RAFTER ASSEMBLY TO LUGS - IF REQ.
- FASTEN EXTERIOR CLOSURE TO PURLIN / FLANGE
- SNAP ON COVER CAP  
(Not Required For Water Tightness)
- FASTEN PRESSURE CAP TO RAFTER & APPLY SEAL
- FASTEN PURLIN ASSEMBLY TO RAFTER

D5 GABLE HEAD  
TYPICAL DETAIL

PLEASE NOTE

ALL DETAILS AS SHOWN ARE FOR REFERENCE  
ONLY AND SUBJECT TO CHANGE PER  
ACURLITE PROJECT PROPOSAL, SPECIFIC SITE  
CONDITIONS, ACURLITE P.E. ANALYSIS, AND  
GOVERNING CODE REQUIREMENTS.



**acurlite**  
Structural Skylights, Inc.

© NOV 30, 2017

570.759.6882    www.acurlite.com    sales@acurlite.com

STANDARD  
SYSTEM  
DETAILS

SCALE:  
6" = 1' - 0"

DRAWN BY:  
K.A.M.

CHECKED BY:  
C.H.M.

DATE - ISSUE:  
11/30/17 - A

SHEET:  
D5

## INSTALLATION

**FASTENERS PROVIDED BY ACURLITE**  
(Fastener Size & Type Per Acurlite P.E. Analysis Unless Noted)

**INSTALL GLAZING PER INDUSTRY STANDARDS**  
(Follow GANA Guidelines & Acurlite Installation Manual)

**USE SPECIFIED DOW CORNING SILICONE**  
(Per Acurlite P.E. Analysis & Installation Manual)

**FASTEN PRESSURE CAP TO RAFTER & APPLY SEAL**  
**SNAP ON COVER CAP**  
(Not Required For Water Tightness)

**FASTEN PURLIN ASSEMBLY TO RAFTER**  
**FASTEN RAFTER ASSEMBLY TO LUGS - IF REQ.**

**FASTEN EXTERIOR CLOSURE TO ANGLE SPACER**  
(Use Pop Rivets As Required)

**FASTEN EXTERIOR CLOSURE TO SILL PAN**  
(Use #10 x 1/2" Pan Head S.M.S. - Locate 12" O.C. Typical)

**FASTEN SILL LUG TO CURB**  
(Seal In & Around Lug & Fastener)

**FULL BEARING SHIM - IF REQUIRED**  
(1/4" Max. Shim Space Typical - Unless Noted Otherwise)  
(Not by Acurlite - Provided By Others)

**INSTALL SILL PAN IN BED OF SEALANT**

## PLEASE NOTE

**CURB MUST RESIST ALL LOADS/REACTIONS  
IMPOSED BY SKYLIGHT**  
(Reactions Provided By Acurlite P.E.)  
(Responsible E.O.R. to Verify and Approve)

**CURB SHOULD BE PLUMB, LEVEL & SQUARE  
PER INDUSTRY STANDARD TOLERANCES**  
(Max Allowed  $\pm 1/8"$  PER 12' - 0" - Unless Noted Otherwise)  
(Not By Acurlite - Provided By Others)

**ALL ROOFING, TERMINATION BARS, REGLETS,  
COUNTER FLASHINGS & FLASHINGS NOT  
INTEGRAL TO SKYLIGHT SYSTEM FUNCTION**  
(Not By Acurlite - Provided By Others)

## OPTIONS FOR VISUAL ENHANCEMENT

- STANDARD & CUSTOM FINISHES**  
(Paint, Anodize & Powder Coat Available)
- SHADES/LOUVERS - PANELS - BIPV/DYNAMIC GLAZING**  
(Consult Factory for your project specific needs)
- VARIABLE SLOPE - ALL PITCHES AVAILABLE**  
(Consult Factory - Based On Project Specific Conditions)

**INSULATED LAMINATED / LAMINATED GLAZING**  
**INCLUDES ALL BACKER ROD & GLAZING SEALANTS**  
(Max Unit Size & Required Thickness - Per AAMA Guidelines)  
(Glazing Calculations Can Be Provided For Additional Cost)

**EXTRUDED ALUM. RAFTER**  
(2 1/2" Width - Depth/Reinforcement Per Acurlite P.E. Analysis)

**SILL LUG**  
(Lug Size, Type & Locations Per Acurlite P.E. Analysis)

**EXTRUDED ALUM. PURLIN**  
(2 1/2" Width - Depth/Reinforcement Per Acurlite P.E. Analysis)

**SILICONE GASKET**

**ALUM. GLASS REST & SILICONE SETTING BLOCK**  
(Located At Quarter Points - 2 Per Bay)

**EXTRUDED ALUM. COVER CAP  
& PRESSURE CAP W/ GASKET**

**FORMED ANGLE SPACER - 1/16" ALUM. STANDARD**  
(Consult Factory For Optional Thickness & Materials)  
(Factory Applied To Purlin)

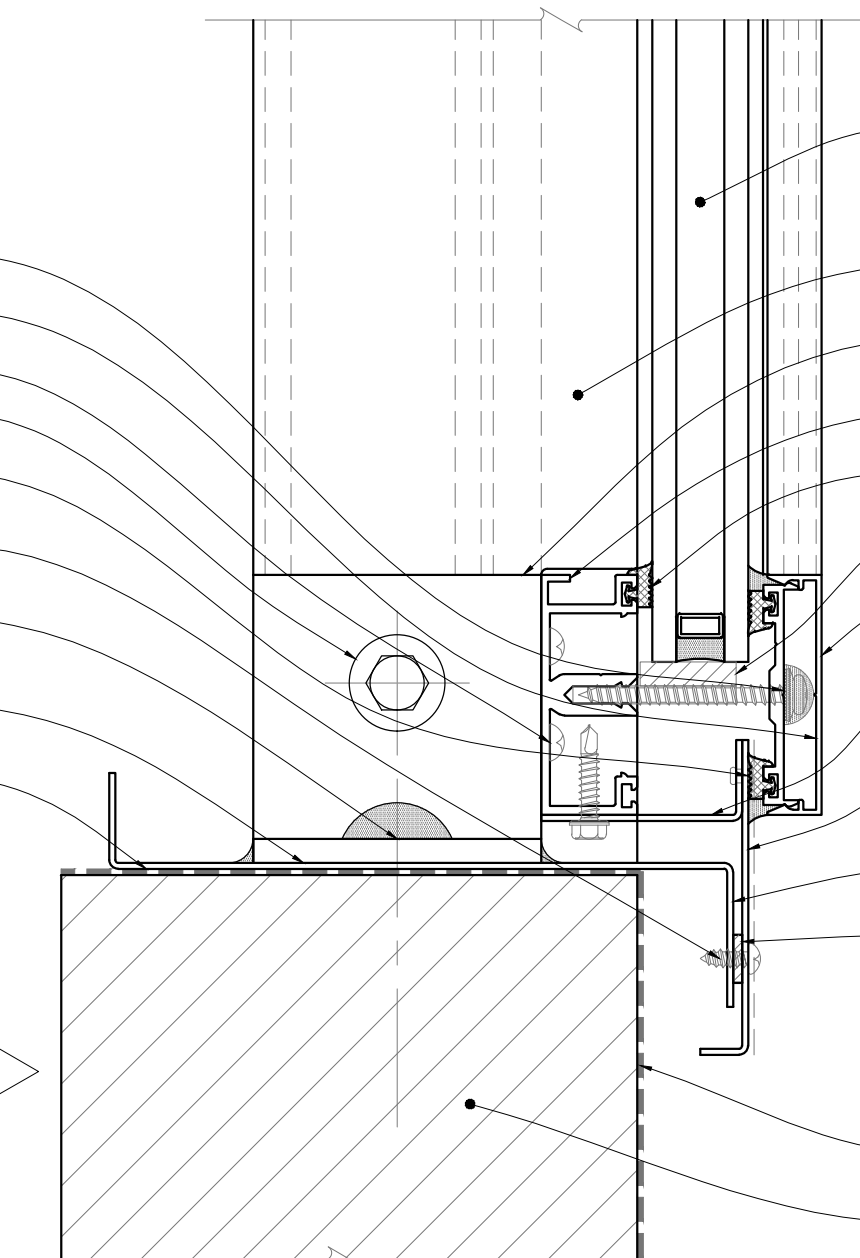
**FORMED EXTERIOR CLOSURE - 1/16" ALUM. STANDARD**  
(Consult Factory For Optional Thickness & Materials)  
(Typical Splice Shown As Dashed Line - Locate As Required)

**FORMED SILL PAN - 1/16" ALUM. STANDARD**  
(Consult Factory For Optional Thickness & Materials)

**SPONGE GASKET - FACTORY APPLIED TO SILL PAN**  
(3/4" Void At System Weep As Required)

## CURB / SUBSTRUCTURE BY OTHERS

- DETAILS / MATERIALS PER CONTRACT DOCUMENTS**  
(Not By Acurlite - Provided By Others)
- ISOLATION/WATERPROOF MEMBRANE**  
(Not By Acurlite - Provided By Others)
- PROPER SUBSTRATE REQUIRED FOR ATTACHMENT**  
(Not By Acurlite - Provided By Others)

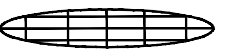


D6

**GABLE SILL  
TYPICAL DETAIL**

## PLEASE NOTE

ALL DETAILS AS SHOWN ARE FOR REFERENCE  
ONLY AND SUBJECT TO CHANGE PER  
ACURLITE PROJECT PROPOSAL, SPECIFIC SITE  
CONDITIONS, ACURLITE P.E. ANALYSIS, AND  
GOVERNING CODE REQUIREMENTS.



**acurlite**  
**Structural Skylights, Inc.**

© NOV 30, 2017

570.759.6882 www.acurlite.com sales@acurlite.com

## STANDARD SYSTEM DETAILS

SCALE:

6" = 1' - 0"

DRAWN BY:

K.A.M.

CHECKED BY:

C.H.M.

DATE - ISSUE:

11/30/17 - A

SHEET:

D6

SILL CURB - INSIDE EDGE  
(Not Provided By Acurlite - Provided By Others)

FORMED SILL PAN - 1/16" ALUM. STANDARD  
(Consult Factory For Optional Thickness & Materials)

EXTRUDED ALUM. RAFTER  
(2 1/2" Width - Depth/Reinforcement Per Acurlite P.E. Analysis)

SILL LUG  
(Lug Size, Type & Locations Per Acurlite P.E. Analysis)

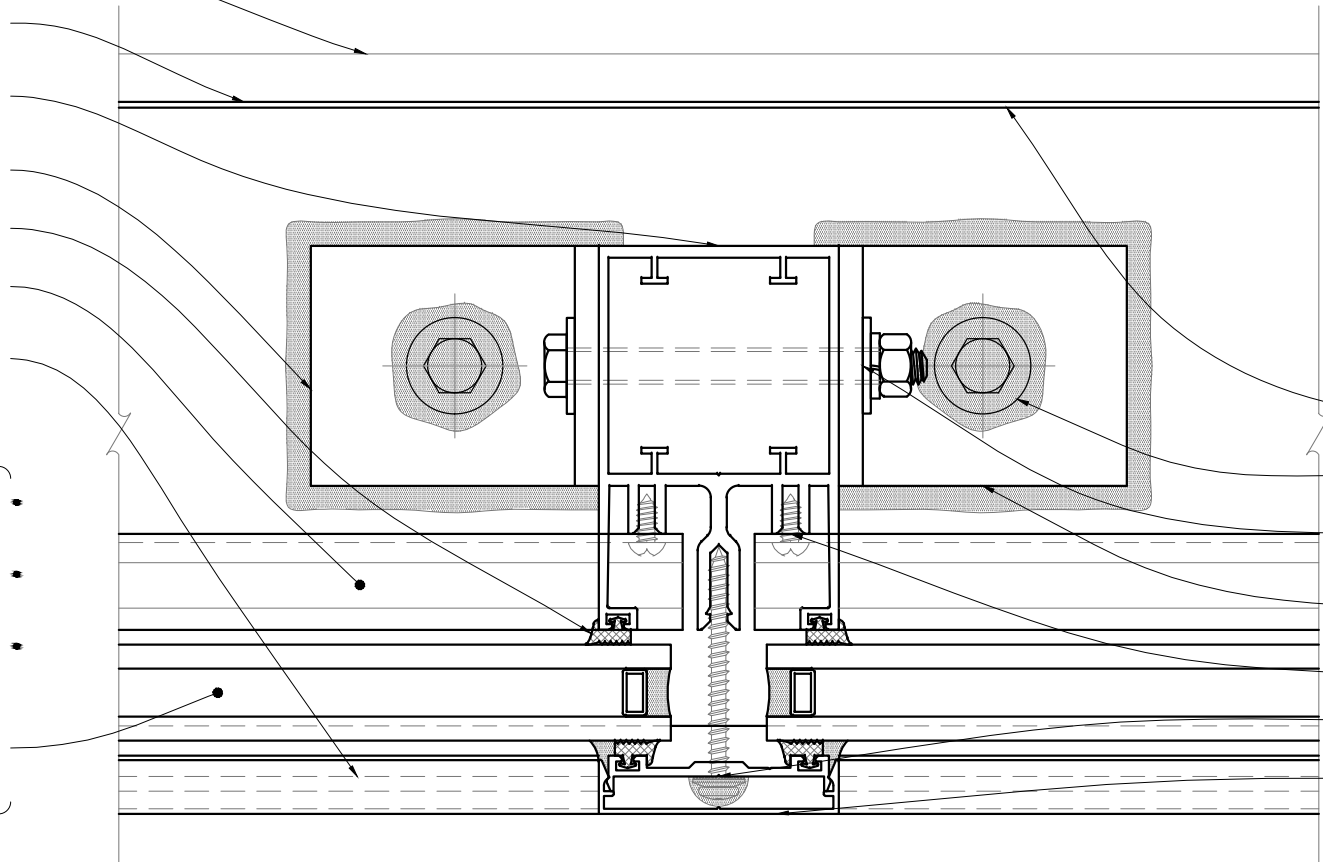
SILICONE GASKET

EXTRUDED ALUM. PURLIN  
(2 1/2" Width - Depth/Reinforcement Per Acurlite P.E. Analysis)

EXTRUDED ALUM. COVER CAP  
& PRESSURE CAP W/ GASKET

OPTIONS FOR VISUAL ENHANCEMENT

- STANDARD & CUSTOM FINISHES  
(Paint, Anodize & Powder Coat Available)
- SHADES/LOUVERS - PANELS - BIPV/DYNAMIC GLAZING  
(Consult Factory for your project specific needs)
- VARIABLE SLOPE - ALL PITCHES AVAILABLE  
(Consult Factory - Based On Project Specific Conditions)
- INSULATED LAMINATED / LAMINATED GLAZING  
INCLUDES ALL BACKER ROD & GLAZING SEALANTS  
(Max Unit Size & Required Thickness - Per AAMA Guidelines)  
(Glazing Calculations Can Be Provided For Additional Cost)



INSTALLATION

- FASTENERS PROVIDED BY ACURLITE  
(Fastener Size & Type Per Acurlite P.E. Analysis Unless Noted)
- INSTALL GLAZING PER INDUSTRY STANDARDS  
(Follow GANA Guidelines & Acurlite Installation Manual)
- USE SPECIFIED DOW CORNING SILICONE  
(Per Acurlite P.E. Analysis & Installation Manual)
- INSTALL SILL PAN IN BED OF SEALANT
- FASTEN SILL LUG TO CURB  
(Seal In & Around Lug & Fastener)
- FASTEN RAFTER ASSEMBLY TO LUGS - IF REQ.
- FULL BEARING SHIM - IF REQUIRED  
(1/4" Max. Shim Space Typical - Unless Noted Otherwise)  
(Not by Acurlite - Provided By Others)
- FASTEN PURLIN ASSEMBLY TO RAFTER
- FASTEN PRESSURE CAP TO RAFTER & APPLY SEAL
- SNAP ON COVER CAP  
(Not Required For Water Tightness)

D7 GABLE POST  
TYPICAL DETAIL

PLEASE NOTE

ALL DETAILS AS SHOWN ARE FOR REFERENCE  
ONLY AND SUBJECT TO CHANGE PER  
ACURLITE PROJECT PROPOSAL, SPECIFIC SITE  
CONDITIONS, ACURLITE P.E. ANALYSIS, AND  
GOVERNING CODE REQUIREMENTS.



**acurlite**  
Structural Skylights, Inc.

© NOV 30, 2017

570.759.6882    www.acurlite.com    sales@acurlite.com

STANDARD  
SYSTEM  
DETAILS

SCALE:  
6" = 1' - 0"

DRAWN BY:  
K.A.M.

CHECKED BY:  
C.H.M.

DATE - ISSUE:  
11/30/17 - A

SHEET:  
D7

SILL LUG  
(Lug Size, Type & Locations Per Acurlite P.E. Analysis)

FORMED SILL PAN CORNER - 1/16" ALUM. STANDARD  
(Consult Factory For Optional Thickness & Materials)

EXTRUDED ALUM. RAFTER  
(2 1/2" Width - Depth/Reinforcement Per Acurlite P.E. Analysis)

SILL CURB - INSIDE EDGE  
(Not Provided By Acurlite - Provided By Others)

### INSTALLATION

- FASTENERS PROVIDED BY ACURLITE  
(Fastener Size & Type Per Acurlite P.E. Analysis Unless Noted)
- INSTALL GLAZING PER INDUSTRY STANDARDS  
(Follow GANA Guidelines & Acurlite Installation Manual)
- USE SPECIFIED DOW CORNING SILICONE  
(Per Acurlite P.E. Analysis & Installation Manual)
- INSTALL SILL PAN CORNER IN BED OF SEALANT
- SNAP ON COVER CAP  
(Not Required For Water Tightness)
- FASTEN PRESSURE CAP TO RAFTER & APPLY SEAL
- FASTEN SILL LUG TO CURB  
(Seal In & Around Lug & Fastener)
- FULL BEARING SHIM - IF REQUIRED  
(1/4" Max. Shim Space Typical - Unless Noted Otherwise)  
(Not by Acurlite - Provided By Others)
- FASTEN RAFTER ASSEMBLY TO LUGS - IF REQ.
- FASTEN PURLIN ASSEMBLY TO RAFTER
- FASTEN CLOSURE TO RAFTER

EXTRUDED ALUM. PURLIN  
(2 1/2" Width - Depth/Reinforcement Per Acurlite P.E. Analysis)

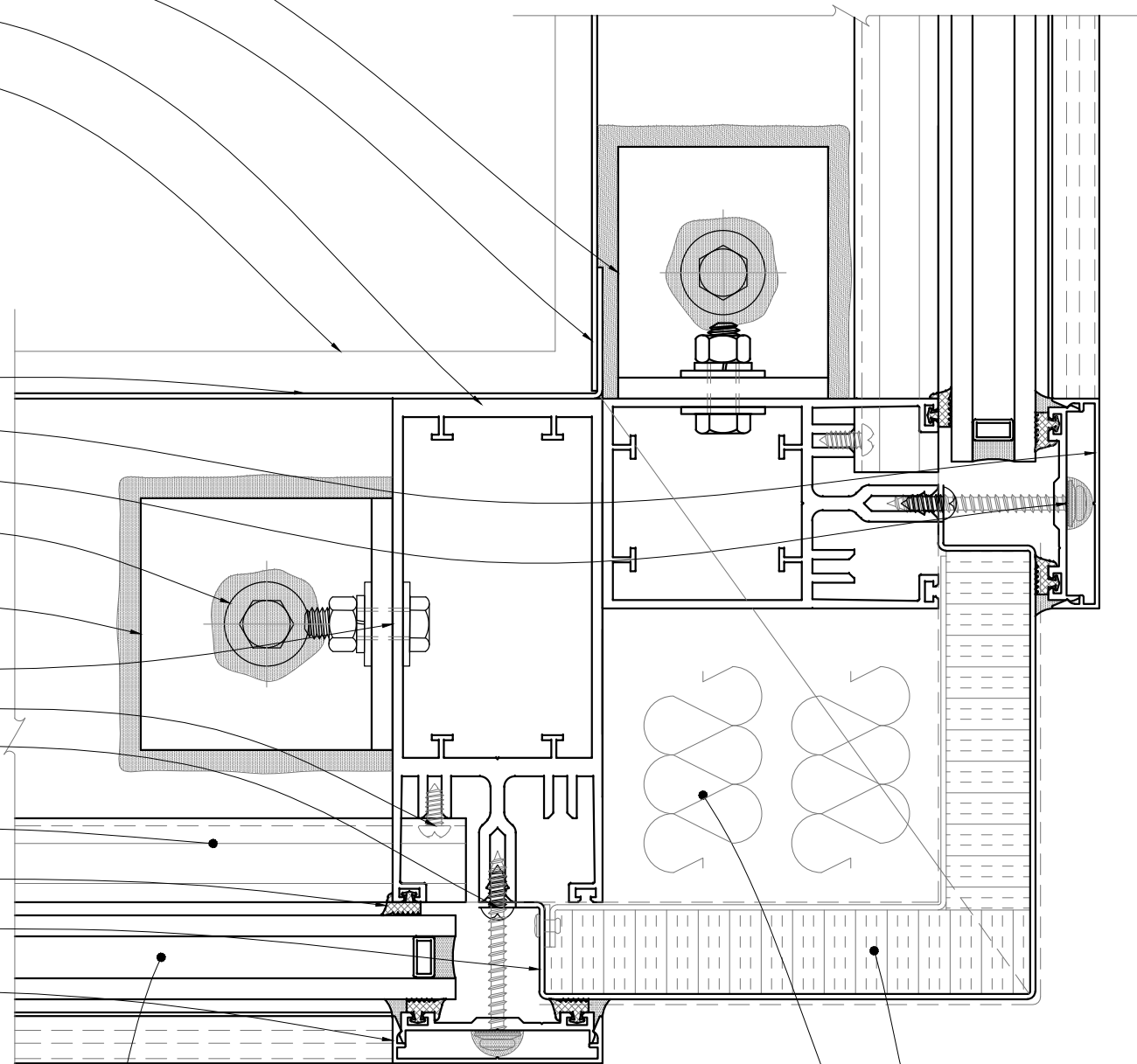
SILICONE GASKET

FORMED EXTERIOR CLOSURE - 1/16" ALUM. STANDARD  
(Consult Factory For Optional Thickness & Materials)

EXTRUDED ALUM. COVER CAP  
& PRESSURE CAP W/ GASKET

### OPTIONS FOR VISUAL ENHANCEMENT

- STANDARD & CUSTOM FINISHES  
(Paint, Anodize & Powder Coat Available)
- SHADES/LOUVERS - PANELS - BIPV/DYNAMIC GLAZING  
(Consult Factory for your project specific needs)
- VARIABLE SLOPE - ALL PITCHES AVAILABLE  
(Consult Factory - Based On Project Specific Conditions)
- INSULATED LAMINATED / LAMINATED GLAZING  
INCLUDES ALL BACKER ROD & GLAZING SEALANTS  
(Max Unit Size & Required Thickness - Per AAMA Guidelines)  
(Glazing Calculations Can Be Provided For Additional Cost)



### OPTIONS FOR THERMAL ENHANCEMENT

- DETAILS AS SHOWN ARE TYPICAL & FOR REFERENCE  
(Consult Factory for Additional Modification & Performance Improvements)
- INSULATED CLOSURE - FOR ADDITIONAL COST  
(Factory Assembly Includes Rigid Insulation & Formed Alum. Backer)
- MINERAL WOOL TO FILL VOIDS - FOR ADDITIONAL COST  
(Standard Batt Type - Installer To Ensure System Weep Path Is NOT Blocked)

**D8** GABLE CORNER  
TYPICAL DETAIL

### PLEASE NOTE

ALL DETAILS AS SHOWN ARE FOR REFERENCE  
ONLY AND SUBJECT TO CHANGE PER  
ACURLITE PROJECT PROPOSAL, SPECIFIC SITE  
CONDITIONS, ACURLITE P.E. ANALYSIS, AND  
GOVERNING CODE REQUIREMENTS.

  
**acurlite**  
Structural Skylights, Inc.  
© NOV 30, 2017  
570.759.6882 www.acurlite.com sales@acurlite.com

### STANDARD SYSTEM DETAILS

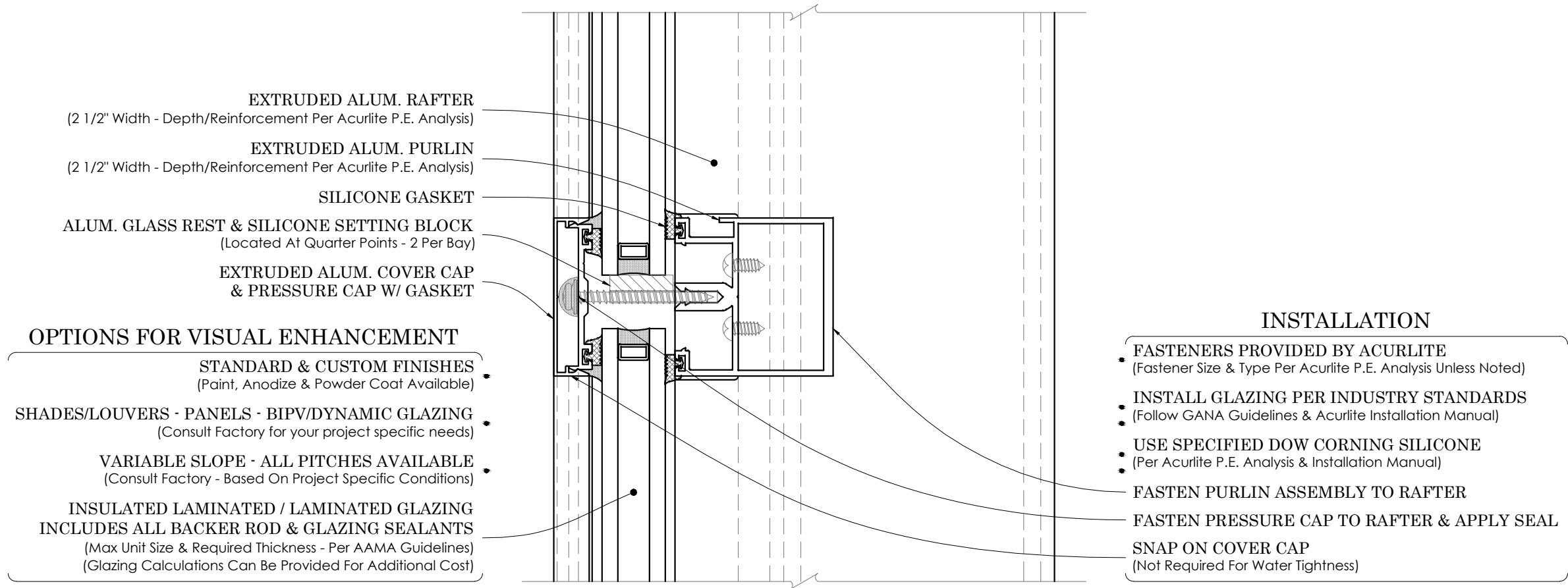
SCALE:  
6" = 1' - 0"

DRAWN BY:  
K.A.M.

CHECKED BY:  
C.H.M.

DATE - ISSUE:  
11/30/17 - A

SHEET:  
D8



**D9** **VERT. PURLIN**  
**TYPICAL DETAIL**

**PLEASE NOTE**

ALL DETAILS AS SHOWN ARE FOR REFERENCE  
ONLY AND SUBJECT TO CHANGE PER  
ACURLITE PROJECT PROPOSAL, SPECIFIC SITE  
CONDITIONS, ACURLITE P.E. ANALYSIS, AND  
GOVERNING CODE REQUIREMENTS.

  
**acurlite**  
Structural Skylights, Inc.  
© NOV 30, 2017  
570.759.6882  
www.acurlite.com sales@acurlite.com

**STANDARD  
SYSTEM  
DETAILS**

SCALE:	6" = 1' - 0"
DRAWN BY:	K.A.M.
CHECKED BY:	C.H.M.
DATE - ISSUE:	11/30/17 - A
SHEET:	D9

## OPTIONS FOR VISUAL ENHANCEMENT

**STANDARD & CUSTOM FINISHES**  
(Paint, Anodize & Powder Coat Available)

**SHADES/LOUVERS - PANELS - BIPV/DYNAMIC GLAZING**  
(Consult Factory for your project specific needs)

**VARIABLE SLOPE - ALL PITCHES AVAILABLE**  
(Consult Factory - Based On Project Specific Conditions)

**INSULATED LAMINATED / LAMINATED GLAZING INCLUDES ALL BACKER ROD & GLAZING SEALANTS**  
(Max Unit Size & Required Thickness - Per AAMA Guidelines)  
(Glazing Calculations Can Be Provided For Additional Cost)

**EXTRUDED ALUM. RAFTER**  
(2 1/2" Width - Depth/Reinforcement Per Acurlite P.E. Analysis)

**FORMED INTERIOR CLOSURE - OPTIONAL**  
(Consult Factory For Optional Thickness & Materials)

**SILL LUG**  
(Lug Size, Type & Locations Per Acurlite P.E. Analysis)

**EXTRUDED ALUM. PURLIN**  
(2 1/2" Width - Depth/Reinforcement Per Acurlite P.E. Analysis)

**SILICONE GASKET**

**ALUM. GLASS REST & SILICONE SETTING BLOCK**  
(Located At Quarter Points - 2 Per Bay)

**EXTRUDED ALUM. COVER CAP & PRESSURE CAP W/ GASKET**

**FORMED ANGLE SPACER - 1/16" ALUM. STANDARD**  
(Consult Factory For Optional Thickness & Materials)  
(Factory Applied To Purlin)

**FORMED EXTERIOR CLOSURE - 1/16" ALUM. STANDARD**  
(Consult Factory For Optional Thickness & Materials)  
(Typical Splice Shown As Dashed Line - Locate As Required)

**FORMED SILL PAN - 1/16" ALUM. STANDARD**  
(Consult Factory For Optional Thickness & Materials)

**SPONGE GASKET - FACTORY APPLIED TO SILL PAN**  
(3/4" Void At System Weep As Required)

## CURB / SUBSTRUCTURE BY OTHERS

**DETAILS / MATERIALS PER CONTRACT DOCUMENTS**  
(Not By Acurlite - Provided By Others)

**ISOLATION/WATERPROOF MEMBRANE**  
(Not By Acurlite - Provided By Others)

**PROPER SUBSTRATE REQUIRED FOR ATTACHMENT**  
(Not By Acurlite - Provided By Others)

## INSTALLATION

**FASTENERS PROVIDED BY ACURLITE**  
(Fastener Size & Type Per Acurlite P.E. Analysis Unless Noted)

**INSTALL GLAZING PER INDUSTRY STANDARDS**  
(Follow GANA Guidelines & Acurlite Installation Manual)

**USE SPECIFIED DOW CORNING SILICONE**  
(Per Acurlite P.E. Analysis & Installation Manual)

**FASTEN INTERIOR CLOSURE TO PURLIN / ANGLE**

**FASTEN PRESSURE CAP TO RAFTER & APPLY SEAL**

**SNAP ON COVER CAP**  
(Not Required For Water Tightness)

**FASTEN PURLIN ASSEMBLY TO RAFTER**

**FASTEN RAFTER ASSEMBLY TO LUGS - IF REQ.**

**FASTEN EXTERIOR CLOSURE TO ANGLE SPACER**  
(Use Pop Rivets As Required)

**FASTEN EXTERIOR CLOSURE TO SILL PAN**  
(Use #10 x 1/2" Pan Head S.M.S. - Locate 12" O.C. Typical)

**FASTEN SILL LUG TO CURB**  
(Seal In & Around Lug & Fastener)

**FULL BEARING SHIM - IF REQUIRED**  
(1/4" Max. Shim Space Typical - Unless Noted Otherwise)  
(Not by Acurlite - Provided By Others)

**INSTALL SILL PAN IN BED OF SEALANT**

## PLEASE NOTE

**CURB MUST RESIST ALL LOADS/REACTIONS IMPOSED BY SKYLIGHT**  
(Reactions Provided By Acurlite P.E.)  
(Responsible E.O.R. to Verify and Approve)

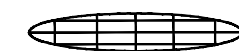
**CURB SHOULD BE PLUMB, LEVEL & SQUARE PER INDUSTRY STANDARD TOLERANCES**  
(Max Allowed  $\pm 1/8"$  PER 12' - 0" - Unless Noted Otherwise)  
(Not By Acurlite - Provided By Others)

**ALL ROOFING, TERMINATION BARS, REGLETS, COUNTER FLASHINGS & FLASHINGS NOT INTEGRAL TO SKYLIGHT SYSTEM FUNCTION**  
(Not By Acurlite - Provided By Others)

**VERT. SILL**  
**TYPICAL DETAIL**

## PLEASE NOTE

ALL DETAILS AS SHOWN ARE FOR REFERENCE ONLY AND SUBJECT TO CHANGE PER ACURLITE PROJECT PROPOSAL, SPECIFIC SITE CONDITIONS, ACURLITE P.E. ANALYSIS, AND GOVERNING CODE REQUIREMENTS.



**acurlite**  
**Structural Skylights, Inc.**

© NOV 30, 2017

570.759.6882 www.acurlite.com sales@acurlite.com

## STANDARD SYSTEM DETAILS

SCALE:

6" = 1' - 0"

DRAWN BY:

K.A.M.

CHECKED BY:

C.H.M.

DATE - ISSUE:

11/30/17 - A

SHEET:

D10

PLEASE NOTE

ALL DETAILS AS SHOWN ARE FOR REFERENCE ONLY AND SUBJECT TO CHANGE PER ACURLITE PROJECT PROPOSAL, SPECIFIC SITE CONDITIONS, ACURLITE P.E. ANALYSIS, AND GOVERNING CODE REQUIREMENTS.



**acurlite**  
Structural Skylights, Inc.

© NOV 30, 2017

570.759.6882 www.acurlite.com sales@acurlite.com

STANDARD  
SYSTEM  
DETAILS

SCALE:

6" = 1' - 0"

DRAWN BY:

K.A.M.

CHECKED BY:

C.H.M.

DATE - ISSUE:

11/30/17 - A

SHEET:

D11

INSTALLATION

FASTENERS PROVIDED BY ACURLITE  
(Fastener Size & Type Per Acurlite P.E. Analysis Unless Noted)

INSTALL GLAZING PER INDUSTRY STANDARDS  
(Follow GANA Guidelines & Acurlite Installation Manual)

USE SPECIFIED DOW CORNING SILICONE  
(Per Acurlite P.E. Analysis & Installation Manual)

INSTALL SILL PAN IN BED OF SEALANT

FASTEN SILL LUG TO CURB  
(Seal In & Around Lug & Fastener)

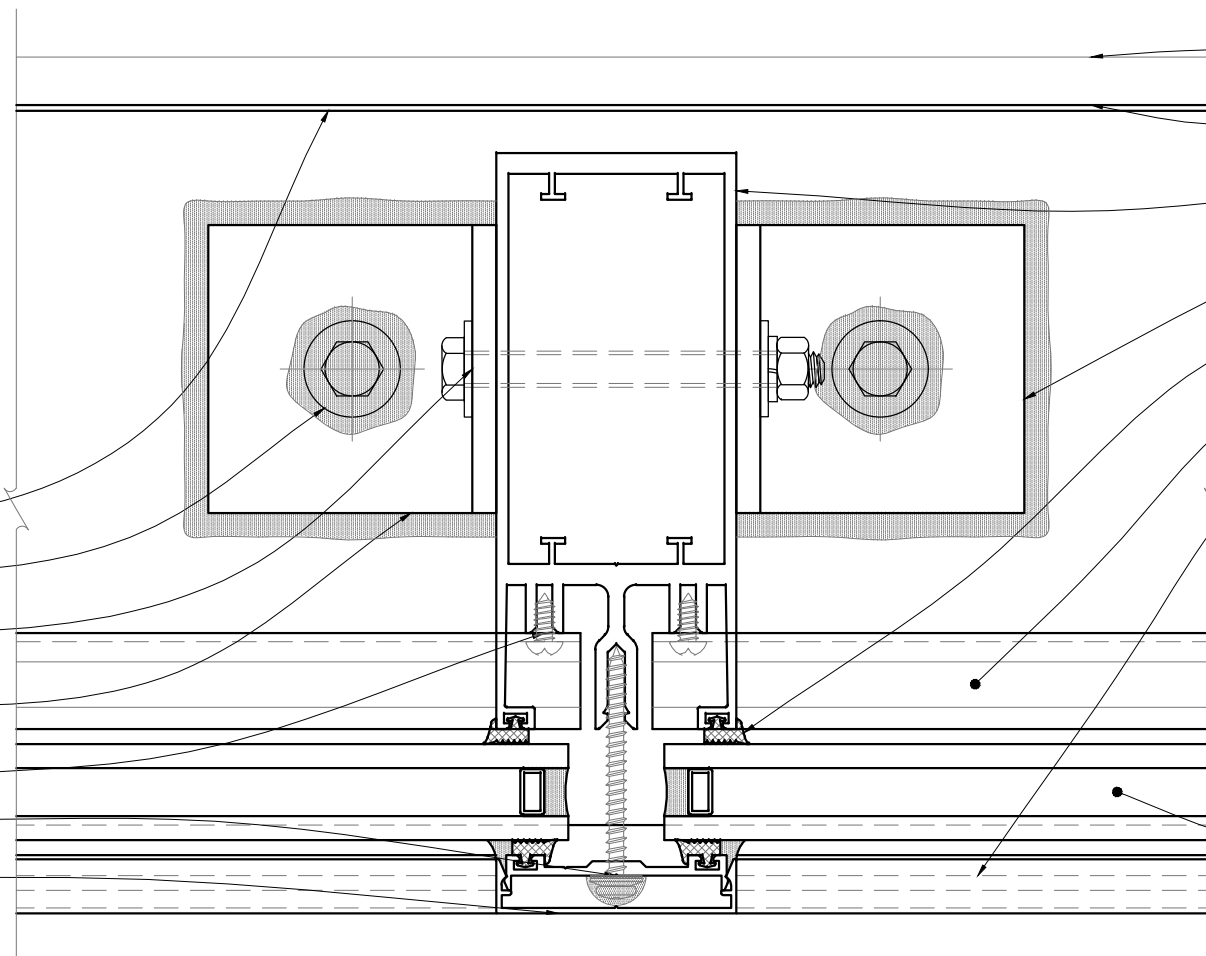
FASTEN RAFTER ASSEMBLY TO LUGS - IF REQ.

FULL BEARING SHIM - IF REQUIRED  
(1/4" Max. Shim Space Typical - Unless Noted Otherwise)  
(Not by Acurlite - Provided By Others)

FASTEN PURLIN ASSEMBLY TO RAFTER

FASTEN PRESSURE CAP TO RAFTER & APPLY SEAL

SNAP ON COVER CAP  
(Not Required For Water Tightness)



SILL CURB - INSIDE EDGE  
(Not Provided By Acurlite - Provided By Others)

FORMED SILL PAN - 1/16" ALUM. STANDARD  
(Consult Factory For Optional Thickness & Materials)

EXTRUDED ALUM. RAFTER  
(2 1/2" Width - Depth/Reinforcement Per Acurlite P.E. Analysis)

SILL LUG  
(Lug Size, Type & Locations Per Acurlite P.E. Analysis)

SILICONE GASKET

EXTRUDED ALUM. PURLIN  
(2 1/2" Width - Depth/Reinforcement Per Acurlite P.E. Analysis)

EXTRUDED ALUM. COVER CAP  
& PRESSURE CAP W/ GASKET

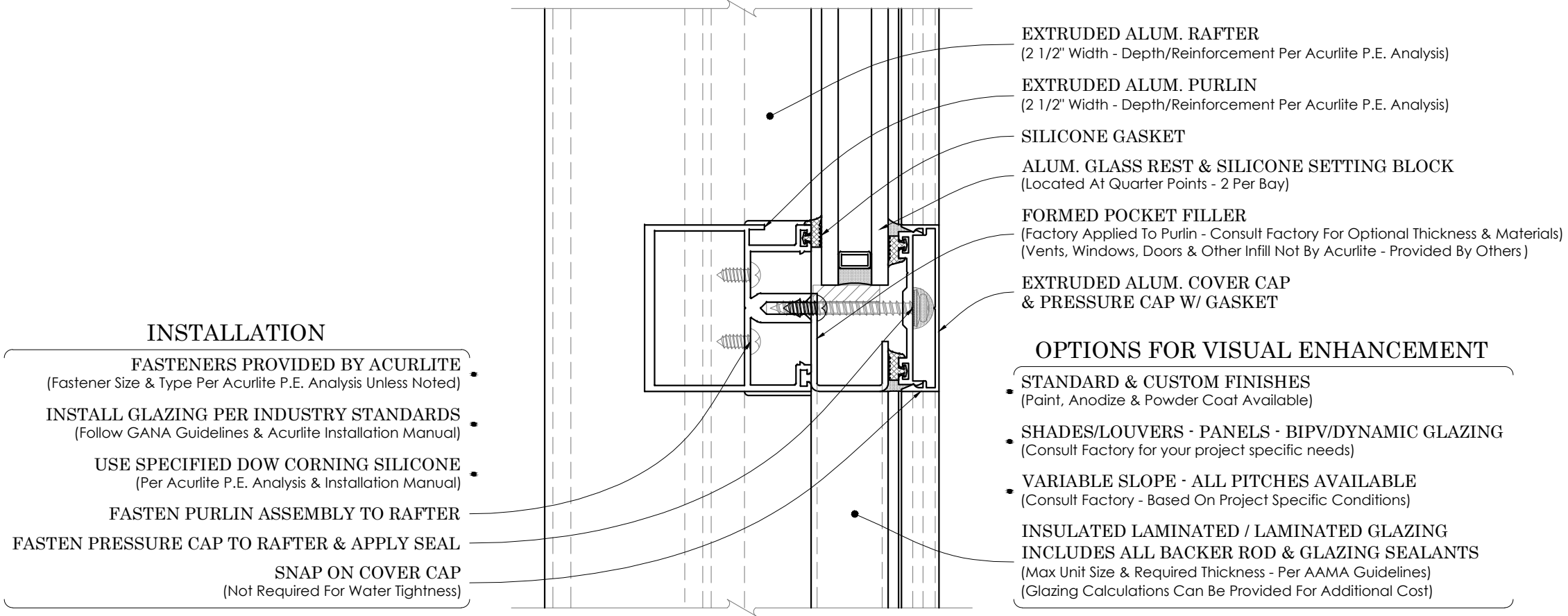
OPTIONS FOR VISUAL ENHANCEMENT

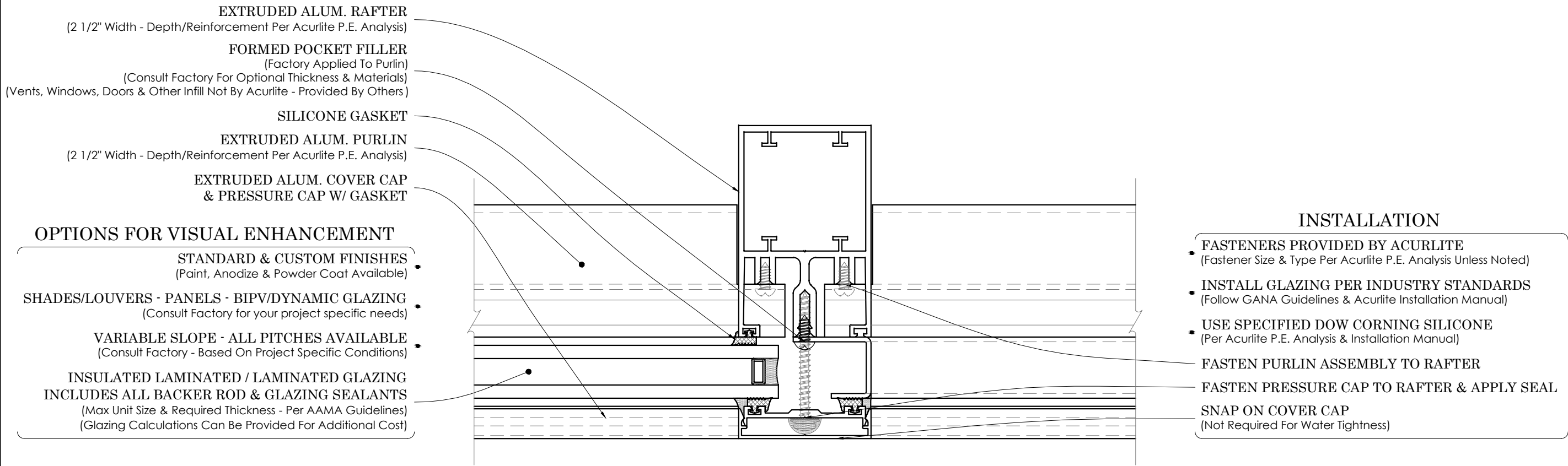
- STANDARD & CUSTOM FINISHES  
(Paint, Anodize & Powder Coat Available)
- SHADES/LOUVERS - PANELS - BIPV/DYNAMIC GLAZING  
(Consult Factory for your project specific needs)
- VARIABLE SLOPE - ALL PITCHES AVAILABLE  
(Consult Factory - Based On Project Specific Conditions)

INSULATED LAMINATED / LAMINATED GLAZING  
INCLUDES ALL BACKER ROD & GLAZING SEALANTS  
(Max Unit Size & Required Thickness - Per AAMA Guidelines)  
(Glazing Calculations Can Be Provided For Additional Cost)

D11

VERT. RAFTER  
TYPICAL DETAIL





**HORZ. PUNCHED  
OPENING**

**D13**

**OPTIONAL DETAIL**

**PLEASE NOTE**

ALL DETAILS AS SHOWN ARE FOR REFERENCE  
ONLY AND SUBJECT TO CHANGE PER  
ACURLITE PROJECT PROPOSAL, SPECIFIC SITE  
CONDITIONS, ACURLITE P.E. ANALYSIS, AND  
GOVERNING CODE REQUIREMENTS.

  
**acurlite**  
Structural Skylights, Inc.  
© NOV 30, 2017  
570.759.6882 www.acurlite.com sales@acurlite.com

**STANDARD  
SYSTEM  
DETAILS**

SCALE:  
6" = 1' - 0"

DRAWN BY:  
K.A.M.

CHECKED BY:  
C.H.M.

DATE - ISSUE:  
11/30/17 - A

SHEET:  
D13