

PYRAMID
ISOMETRIC VIEW

PLEASE NOTE

ALL DETAILS AS SHOWN ARE FOR REFERENCE ONLY AND SUBJECT TO CHANGE PER ACURLITE PROJECT PROPOSAL, SPECIFIC SITE CONDITIONS, ACURLITE P.E. ANALYSIS, AND GOVERNING CODE REQUIREMENTS.



acurlite
Structural Skylights, Inc.

© NOV 30, 2017

570.759.6882 www.acurlite.com sales@acurlite.com

**STANDARD
 SYSTEM
 DETAILS**

SCALE:

N.T.S.

DRAWN BY:

K.A.M.

CHECKED BY:

C.H.M.

DATE - ISSUE:

11/30/17 - A

SHEET:

SAMPLE

OPTIONS FOR VISUAL ENHANCEMENT

STANDARD & CUSTOM FINISHES
(Paint, Anodize & Powder Coat Available)

SHADES/LOUVERS - PANELS - BIPV/DYNAMIC GLAZING
(Consult Factory For Your Project Specific Requirements)

VARIABLE SLOPE - ALL PITCHES AVAILABLE
(Consult Factory - Based On Project Specific Conditions)

INSULATED LAMINATED / LAMINATED GLAZING
INCLUDES ALL BACKER ROD & GLAZING SEALANTS
(Max Unit Size & Required Thickness - Per AAMA Guidelines)
(Glazing Calculations Provided For Additional Cost)

EXTRUDED ALUM. COVER CAP & PRESSURE CAP W/ GASKET

ALUM. GLASS REST & SILICONE SETTING BLOCK
(Located At Quarter Points - 2 Per Bay)

SILICONE GASKET

STRUCTURAL SEAL FLANGE - IF REQUIRED
(Factory Applied To Purlin - 1/4-20 x 3/4" Flat Head Screw)

EXTRUDED ALUMINUM PURLIN
(2 1/2" Width - Depth/Reinforcement Per Acurlite P.E. Analysis)

EXTRUDED ALUMINUM RAFTER
(2 1/2" Width - Depth/Reinforcement Per Acurlite P.E. Analysis)

OPTIONS FOR THERMAL ENHANCEMENT

DETAILS AS SHOWN ARE TYPICAL & FOR REFERENCE
(Consult Factory for Additional Modification & Performance Improvements)

INSULATED CLOSURE - FOR ADDITIONAL COST
(Factory Assembly Includes Rigid Insulation & Formed Backer)

MINERAL WOOL TO FILL VOIDS - FOR ADDITIONAL COST
(Standard Batt Type - Installer To Ensure System Weep Path Is NOT Blocked)

SILL LUG

(Lug Size, Type & Locations Per Acurlite P.E. Analysis)

FORMED EXTERIOR CLOSURE - 1/16" ALUM. STANDARD
(Consult Factory For Optional Thickness & Materials)
(Typical Splice Shown As Dashed Line - Locate As Required)

FORMED SILL PAN - 1/16" ALUM. STANDARD
(Consult Factory For Optional Thickness & Materials)

SPONGE GASKET - FACTORY APPLIED TO SILL PAN
(3/4" Void At System Weep As Required)

CURB / SUBSTRUCTURE BY OTHERS

DETAILS / MATERIALS PER CONTRACT DOCUMENTS
(Not By Acurlite - Provided By Others)

ISOLATION/WATERPROOF MEMBRANE
(Not By Acurlite - Provided By Others)

PROPER SUBSTRATE REQUIRED FOR ATTACHMENT
(Not By Acurlite - Provided By Others)

INSTALLATION

FASTENERS PROVIDED BY ACURLITE
(Fastener Size & Type Per Acurlite P.E. Analysis Unless Noted)

INSTALL GLAZING PER INDUSTRY STANDARDS
(Follow GANA Guidelines & Acurlite Installation Manual)

USE SPECIFIED DOW CORNING SILICONE
(Per Acurlite P.E. Analysis & Installation Manual)

SNAP ON COVER CAP
(Not Required For Water Tightness)

FASTEN PRESSURE CAP TO RAFTER & APPLY SEAL

BACKER ROD & CONTINUOUS SEAL

APPLY CONT. STRUCTURAL SEAL - IF REQUIRED

FASTEN EXTERIOR CLOSURE TO PURLIN / FLANGE

FASTEN PURLIN ASSEMBLY TO RAFTER

FASTEN EXTERIOR CLOSURE TO SILL PAN
(Use #10 x 1/2" Pan Head S.M.S. - Locate 12" O.C. Typical)

FASTEN RAFTER ASSEMBLY TO LUGS - IF REQ.

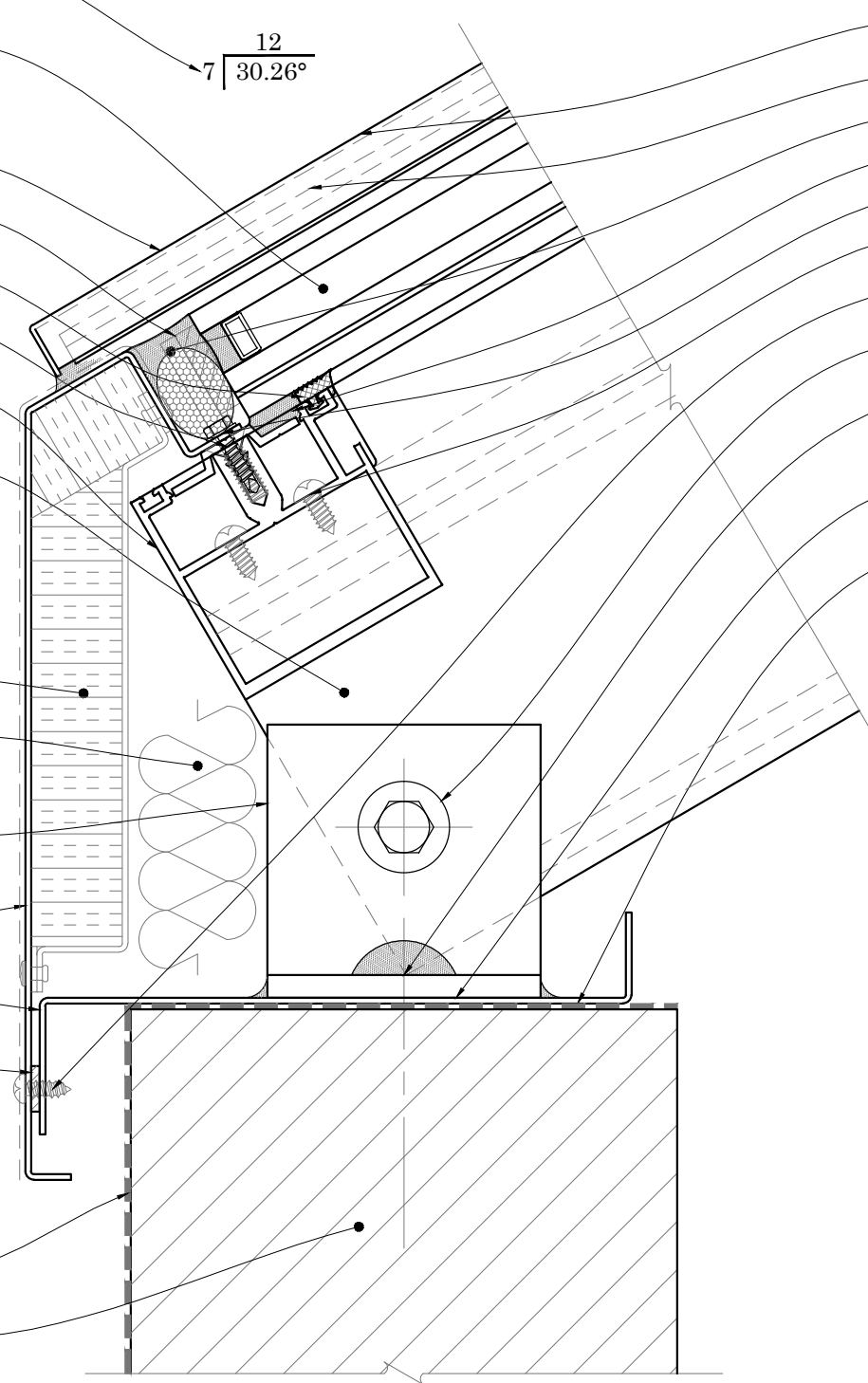
FASTEN SILL LUG TO CURB

(Seal In & Around Lug & Fastener)

FULL BEARING SHIM - IF REQUIRED

(1/4" Max. Shim Space Typical - Unless Noted Otherwise)
(Not by Acurlite - Provided By Others)

INSTALL SILL PAN IN BED OF SEALANT



PLEASE NOTE

CURB MUST RESIST ALL LOADS/REACTIONS IMPOSED BY SKYLIGHT
(Reactions Provided By Acurlite P.E.)
(Responsible E.O.R. to Verify and Approve)

CURB SHOULD BE PLUMB, LEVEL & SQUARE PER INDUSTRY STANDARD TOLERANCES
(Max Allowed ±1/8" PER 12' - 0" - Unless Noted Otherwise)
(Not By Acurlite - Provided By Others)

ALL ROOFING, TERMINATION BARS, REGLETS, COUNTER FLASHINGS & FLASHINGS NOT INTEGRAL TO SKYLIGHT SYSTEM FUNCTION
(Not By Acurlite - Provided By Others)

D1 SILL TYPICAL DETAIL

PLEASE NOTE

ALL DETAILS AS SHOWN ARE FOR REFERENCE ONLY AND SUBJECT TO CHANGE PER ACURLITE PROJECT PROPOSAL, SPECIFIC SITE CONDITIONS, ACURLITE P.E. ANALYSIS, AND GOVERNING CODE REQUIREMENTS.

acurlite
Structural Skylights, Inc.
www.acurlite.com sales@acurlite.com
© NOV 30, 2017
570.759.6882

STANDARD SYSTEM DETAILS

SCALE:	6" = 1' - 0"
DRAWN BY:	K.A.M.
CHECKED BY:	C.H.M.
DATE - ISSUE:	11/30/17 - A
SHEET:	D1

OPTIONS FOR VISUAL ENHANCEMENT

STANDARD & CUSTOM FINISHES
(Paint, Anodize & Powder Coat Available)

SHADES/LOUVERS - PANELS - BIPV/DYNAMIC GLAZING
(Consult Factory For Your Project Specific Requirements)

VARIABLE SLOPE - ALL PITCHES AVAILABLE
(Consult Factory - Based On Project Specific Conditions)

INSULATED LAMINATED / LAMINATED GLAZING
INCLUDES ALL BACKER ROD & GLAZING SEALANTS
(Max Unit Size & Required Thickness - Per AAMA Guidelines)
(Glazing Calculations Can Be Provided For Additional Cost)

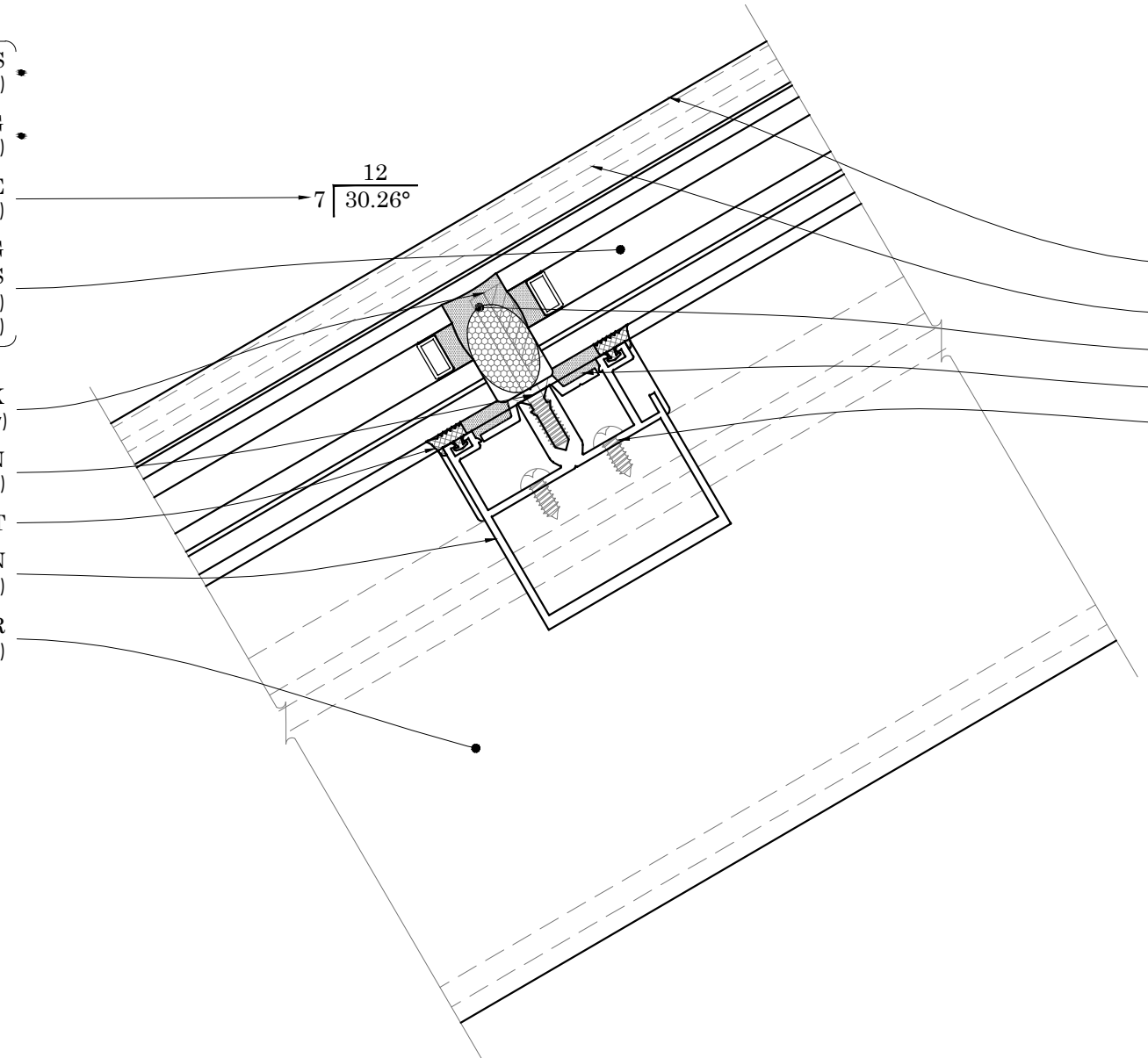
ALUM. GLASS REST & SILICONE SETTING BLOCK
(Located At Quarter Points - 2 Per Bay)

STRUCTURAL SEAL FLANGE FASTENED TO PURLIN
(Factory Applied To Purlin - 1/4-20 x 3/4" Flat Head Screw)

SILICONE GASKET

EXTRUDED ALUM. PURLIN
(2 1/2" Width - Depth/Reinforcement Per Acurlite P.E. Analysis)

EXTRUDED ALUM. RAFTER
(2 1/2" Width - Depth/Reinforcement Per Acurlite P.E. Analysis)



INSTALLATION

FASTENERS PROVIDED BY ACURLITE
(Fastener Size & Type Per Acurlite P.E. Analysis Unless Noted)

INSTALL GLAZING PER INDUSTRY STANDARDS
(Follow GANA Guidelines & Acurlite Installation Manual)

USE SPECIFIED DOW CORNING SILICONE
(Per Acurlite P.E. Analysis & Installation Manual)

SNAP ON COVER CAP
(Not Required For Water Tightness)

FASTEN PRESSURE CAP TO RAFTER & APPLY SEAL

BACKER ROD & CONTINUOUS SEAL

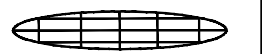
APPLY CONT. STRUCTURAL SEAL - IF REQUIRED

FASTEN PURLIN ASSEMBLY TO RAFTER

D2 PURLIN TYPICAL DETAIL

PLEASE NOTE

ALL DETAILS AS SHOWN ARE FOR REFERENCE ONLY AND SUBJECT TO CHANGE PER ACURLITE PROJECT PROPOSAL, SPECIFIC SITE CONDITIONS, ACURLITE P.E. ANALYSIS, AND GOVERNING CODE REQUIREMENTS.



acurlite
Structural Skylights, Inc.
www.acurlite.com sales@acurlite.com

© NOV 30, 2017

570.759.6882

STANDARD SYSTEM DETAILS

SCALE:
6" = 1' - 0"

DRAWN BY:
K.A.M.

CHECKED BY:
C.H.M.

DATE - ISSUE:
11/30/17 - A

SHEET:
D2

OPTIONS FOR VISUAL ENHANCEMENT

STANDARD & CUSTOM FINISHES
(Paint, Anodize & Powder Coat Available)

SHADES/LOUVERS - PANELS - BIPV/DYNAMIC GLAZING
(Consult Factory For Your Project Specific Requirements)

VARIABLE SLOPE - ALL PITCHES AVAILABLE
(Consult Factory - Based On Project Specific Conditions)

INSULATED LAMINATED / LAMINATED GLAZING
INCLUDES ALL BACKER ROD & GLAZING SEALANTS
(Max Unit Size & Required Thickness - Per AAMA Guidelines)
(Glazing Calculations Provided For Additional Cost)

FORMED EXT. / INT. PEAK CAP - 1/16" ALUM. STANDARD
(Consult Factory For Optional Thickness & Materials)

EXTRUDED ALUM. COVER CAP & PRESSURE CAP W/ GASKET

INSTALLATION

FASTENERS PROVIDED BY ACURLITE
(Fastener Size & Type Per Acurlite P.E. Analysis Unless Noted)

INSTALL GLAZING PER INDUSTRY STANDARDS
(Follow GANA Guidelines & Acurlite Installation Manual)

USE SPECIFIED DOW CORNING SILICONE
(Per Acurlite P.E. Analysis & Installation Manual)

SNAP ON COVER CAP
(Not Required For Water Tightness)

FASTEN PRESSURE CAP TO RAFTER & APPLY SEAL

FASTEN EXT. PEAK TO COVER CAP & SEAL
(Use Pop Rivets As Required)

INSTALL INT. PEAK CAP IN BED OF SEALANT

FASTEN RAFTER ASSEMBLIES TO COMP. RING
(Factory Applied Internal Lug / Tap Bolt Provided For Attachment)

OPTIONS FOR THERMAL ENHANCEMENT

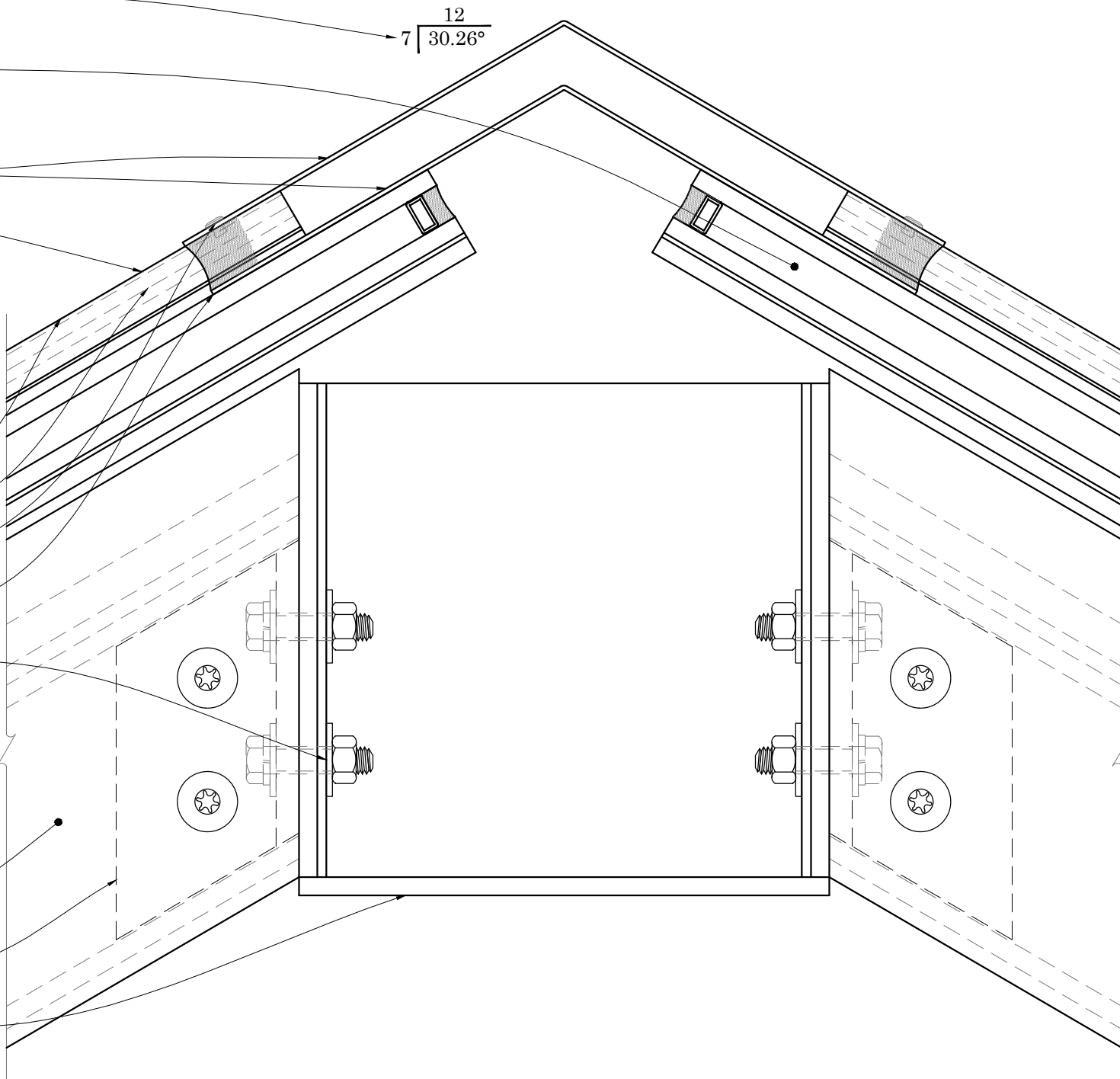
DETAILS AS SHOWN ARE TYPICAL & FOR REFERENCE
(Consult Factory for Additional Modification & Performance Improvements)

MINERAL WOOL TO FILL VOIDS - FOR ADDITIONAL COST
(Standard Batt Type - Installer To Ensure System Weep Path Is NOT Blocked)

EXTRUDED ALUMINUM RAFTER
(2 1/2" Width - Depth/Reinforcement Per Acurlite P.E. Analysis)

EXTRUDED ALUMINUM INTERNAL LUG
(Factory Applied To Rafter - 3/8" x 1" Truss Head)

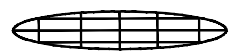
FORMED COMPRESSION RING
(Size & Type Per Acurlite P.E. Analysis)



D3 PEAK TYPICAL DETAIL

PLEASE NOTE

ALL DETAILS AS SHOWN ARE FOR REFERENCE ONLY AND SUBJECT TO CHANGE PER ACURLITE PROJECT PROPOSAL, SPECIFIC SITE CONDITIONS, ACURLITE P.E. ANALYSIS, AND GOVERNING CODE REQUIREMENTS.



acurlite
Structural Skylights, Inc.
www.acurlite.com sales@acurlite.com

© NOV 30, 2017

570.759.6882

STANDARD SYSTEM DETAILS

SCALE:
6" = 1' - 0"

DRAWN BY:
K.A.M.

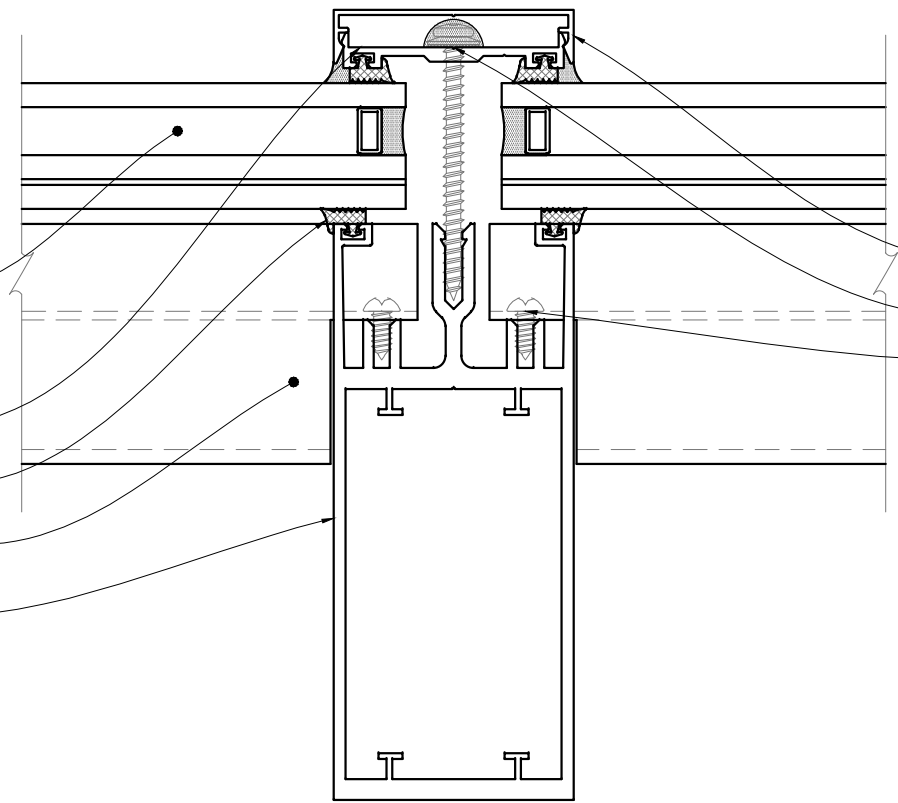
CHECKED BY:
C.H.M.

DATE - ISSUE:
11/30/17 - A

SHEET:
D3

OPTIONS FOR VISUAL ENHANCEMENT

- **STANDARD & CUSTOM FINISHES**
(Paint, Anodize & Powder Coat Available)
- **SHADES/LOUVERS - PANELS - BIPV/DYNAMIC GLAZING**
(Consult Factory for your project specific needs)
- **VARIABLE SLOPE - ALL PITCHES AVAILABLE**
(Consult Factory - Based On Project Specific Conditions)
- **INSULATED LAMINATED / LAMINATED GLAZING**
INCLUDES ALL BACKER ROD & GLAZING SEALANTS
(Max Unit Size & Required Thickness - Per AAMA Guidelines)
(Glazing Calculations Can Be Provided For Additional Cost)
- **EXTRUDED ALUM. COVER CAP & PRESSURE CAP W/ GASKET**
- **SILICONE GASKET**
- **EXTRUDED ALUM. PURLIN**
(2 1/2" Width - Depth/Reinforcement Per Acurlite P.E. Analysis)
- **EXTRUDED ALUM. RAFTER**
(2 1/2" Width - Depth/Reinforcement Per Acurlite P.E. Analysis)



INSTALLATION

- **FASTENERS PROVIDED BY ACURLITE**
(Fastener Size & Type Per Acurlite P.E. Analysis Unless Noted)
- **INSTALL GLAZING PER INDUSTRY STANDARDS**
(Follow GANA Guidelines & Acurlite Installation Manual)
- **USE SPECIFIED DOW CORNING SILICONE**
(Per Acurlite P.E. Analysis & Installation Manual)
- **SNAP ON COVER CAP**
(Not Required for Water tightness)
- **FASTEN PRESSURE CAP TO RAFTER & APPLY SEAL**
- **FASTEN PURLIN ASSEMBLY TO RAFTER**

D4 **RAFTER**
TYPICAL DETAIL

PLEASE NOTE

ALL DETAILS AS SHOWN ARE FOR REFERENCE ONLY AND SUBJECT TO CHANGE PER ACURLITE PROJECT PROPOSAL, SPECIFIC SITE CONDITIONS, ACURLITE P.E. ANALYSIS, AND GOVERNING CODE REQUIREMENTS.



acurlite
Structural Skylights, Inc.
www.acurlite.com sales@acurlite.com

© NOV 30, 2017

570.759.6882

STANDARD SYSTEM DETAILS

SCALE:
6" = 1' - 0"

DRAWN BY:
K.A.M.

CHECKED BY:
C.H.M.

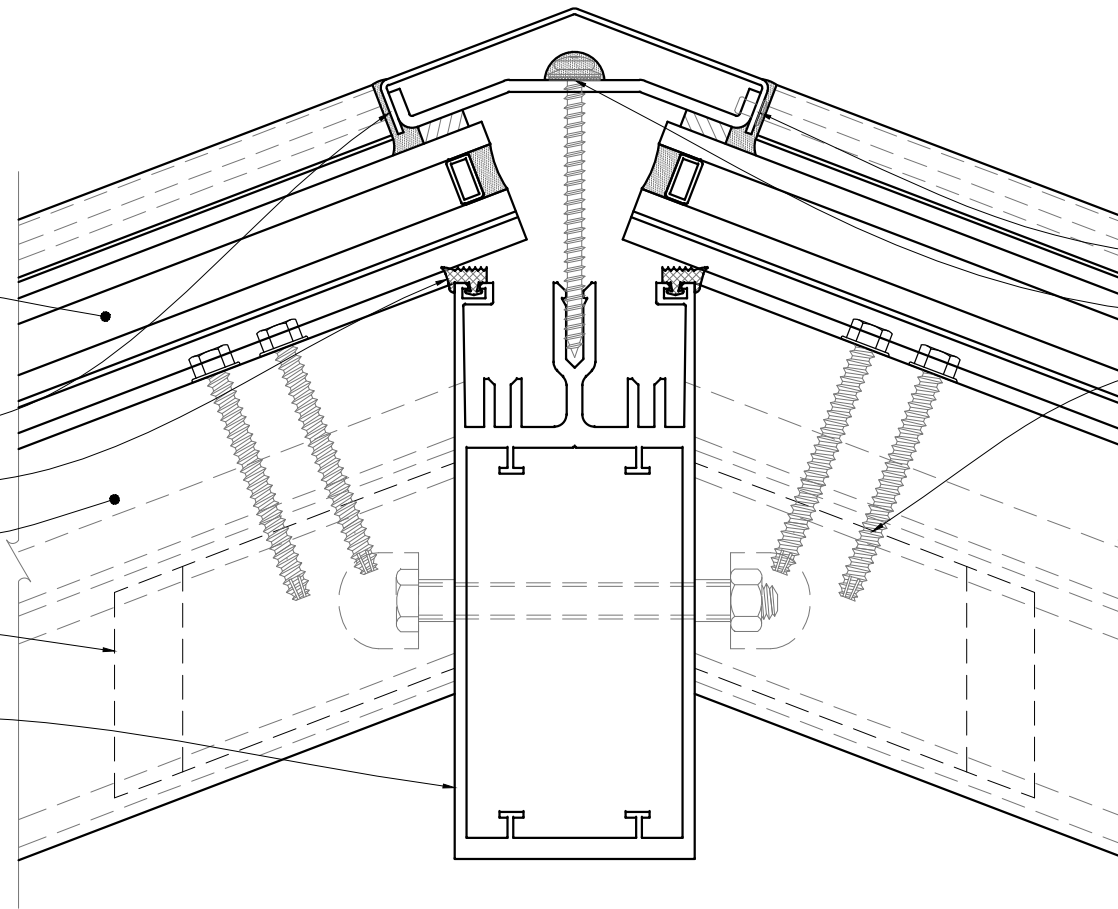
DATE - ISSUE:
11/30/17 - A

SHEET:
D4

OPTIONS FOR VISUAL ENHANCEMENT

- **STANDARD & CUSTOM FINISHES**
(Paint, Anodize & Powder Coat Available)
- **SHADES/LOUVERS - PANELS - BIPV/DYNAMIC GLAZING**
(Consult Factory for your project specific needs)
- **VARIABLE SLOPE - ALL PITCHES AVAILABLE**
(Consult Factory - Based On Project Specific Conditions)
- **INSULATED LAMINATED / LAMINATED GLAZING**
INCLUDES ALL BACKER ROD & GLAZING SEALANTS
(Max Unit Size & Required Thickness - Per AAMA Guidelines)
(Glazing Calculations Can Be Provided For Additional Cost)

- **EXTRUDED ALUM. COVER CAP & PRESSURE CAP W/ SPONGE GASKET**
- **SILICONE GASKET**
- **EXTRUDED ALUM. JACK RAFTER**
(2 1/2" Width - Depth/Reinforcement Per Acurlite P.E. Analysis)
- **INTERNAL ALUMINUM SPIGOT BAR**
(Factory Applied To Hip Rafter)
(Size & Type Per Acurlite P.E. Analysis)
- **EXTRUDED ALUM. HIP RAFTER**
(2 1/2" Width - Depth/Reinforcement Per Acurlite P.E. Analysis)



INSTALLATION

- **FASTENERS PROVIDED BY ACURLITE**
(Fastener Size & Type Per Acurlite P.E. Analysis Unless Noted)
- **INSTALL GLAZING PER INDUSTRY STANDARDS**
(Follow GANA Guidelines & Acurlite Installation Manual)
- **USE SPECIFIED DOW CORNING SILICONE**
(Per Acurlite P.E. Analysis & Installation Manual)
- **FORMED COVER CAP - FASTEN WITH POP RIVETS**
(Not Required for Water tightness)
- **FASTEN PRESSURE CAP TO RAFTER & APPLY SEAL**
- **FASTEN JACK RAFTER ASSEMBLY TO SPIGOT**

D5 **HIP RAFTER**
TYPICAL DETAIL

PLEASE NOTE

ALL DETAILS AS SHOWN ARE FOR REFERENCE ONLY AND SUBJECT TO CHANGE PER ACURLITE PROJECT PROPOSAL, SPECIFIC SITE CONDITIONS, ACURLITE P.E. ANALYSIS, AND GOVERNING CODE REQUIREMENTS.


acurlite
Structural Skylights, Inc.
 www.acurlite.com sales@acurlite.com
 © NOV 30, 2017
 570.759.6882

STANDARD SYSTEM DETAILS

SCALE:	6" = 1' - 0"
DRAWN BY:	K.A.M.
CHECKED BY:	C.H.M.
DATE - ISSUE:	11/30/17 - A
SHEET:	D5

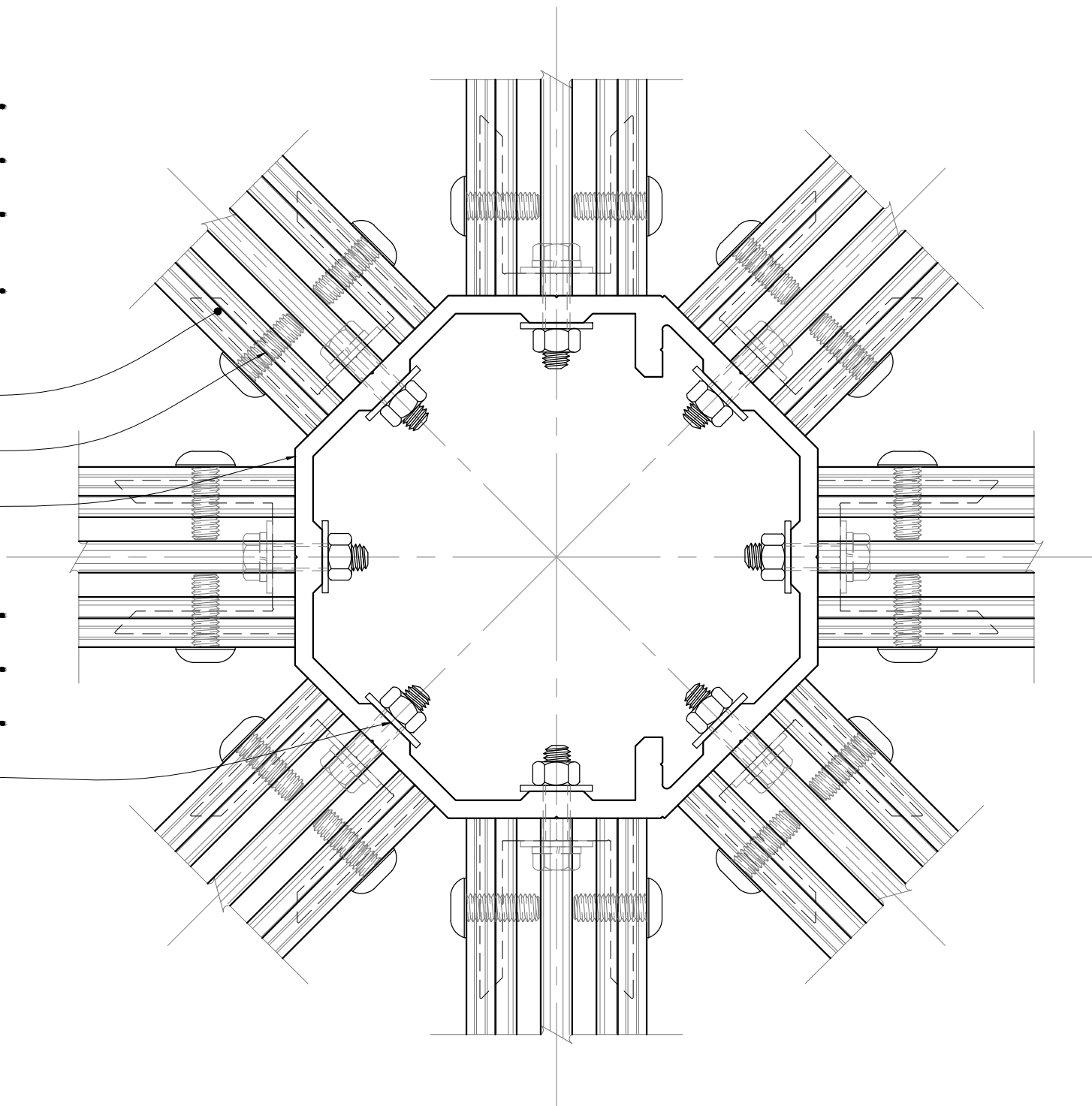
OPTIONS FOR VISUAL ENHANCEMENT

- STANDARD & CUSTOM FINISHES
(Paint, Anodize & Powder Coat Available)
- SHADES/LOUVERS - PANELS - BIPV/DYNAMIC GLAZING
(Consult Factory for your project specific needs)
- VARIABLE SLOPE - ALL PITCHES AVAILABLE
(Consult Factory - Based On Project Specific Conditions)
- INSULATED LAMINATED / LAMINATED GLAZING
INCLUDES ALL BACKER ROD & GLAZING SEALANTS
(Max Unit Size & Required Thickness - Per AAMA Guidelines)
(Glazing Calculations Can Be Provided For Additional Cost)

- EXTRUDED ALUMINUM RAFTER
(2 1/2" Width - Depth/Reinforcement Per Acurlite P.E. Analysis)
- EXTRUDED ALUMINUM INTERNAL LUG
(Factory Applied To Rafter - 3/8" x 1" Truss Head)
- EXTRUDED ALUM. COMPRESSION RING
(Sized/Reinforced Per Acurlite P.E. Analysis)

INSTALLATION

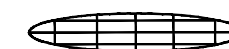
- FASTENERS PROVIDED BY ACURLITE
(Fastener Size & Type Per Acurlite P.E. Analysis Unless Noted)
- INSTALL GLAZING PER INDUSTRY STANDARDS
(Follow GANA Guidelines & Acurlite Installation Manual)
- USE SPECIFIED DOW CORNING SILICONE
(Per Acurlite P.E. Analysis & Installation Manual)
- FASTEN RAFTER ASSEMBLIES TO COMP RING
(Factory Applied Internal Lug / Tap Bolt Provided For Attachment)



D6 **COMP. RING**
TYPICAL DETAIL

PLEASE NOTE

ALL DETAILS AS SHOWN ARE FOR REFERENCE ONLY AND SUBJECT TO CHANGE PER ACURLITE PROJECT PROPOSAL, SPECIFIC SITE CONDITIONS, ACURLITE P.E. ANALYSIS, AND GOVERNING CODE REQUIREMENTS.



acurlite
Structural Skylights, Inc.

www.acurlite.com sales@acurlite.com

© NOV 30, 2017

570.759.6882

STANDARD SYSTEM DETAILS

SCALE:
6" = 1' - 0"

DRAWN BY:
K.A.M.

CHECKED BY:
C.H.M.

DATE - ISSUE:
11/30/17 - A

SHEET:
D6