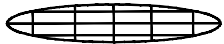


**LEAN-TO**  
**ISOMETRIC VIEW**

PLEASE NOTE

ALL DETAILS AS SHOWN ARE FOR REFERENCE ONLY AND SUBJECT TO CHANGE PER ACURLITE PROJECT PROPOSAL, SPECIFIC SITE CONDITIONS, ACURLITE P.E. ANALYSIS, AND GOVERNING CODE REQUIREMENTS.



**acurlite**  
Structural Skylights, Inc.

© NOV 30, 2017

570.759.6882 www.acurlite.com sales@acurlite.com

STANDARD  
SYSTEM  
DETAILS

SCALE:

N.T.S.

DRAWN BY:

K.A.M.

CHECKED BY:

C.H.M.

DATE - ISSUE:

11/30/17 - A

SHEET:

SAMPLE

## OPTIONS FOR VISUAL ENHANCEMENT

**STANDARD & CUSTOM FINISHES**  
(Paint, Anodize & Powder Coat Available)

**SHADES/LOUVERS - PANELS - BIPV/DYNAMIC GLAZING**  
(Consult Factory for your project specific needs)

**VARIABLE SLOPE - ALL PITCHES AVAILABLE**  
(Consult Factory - Based On Project Specific Conditions)

**INSULATED LAMINATED / LAMINATED GLAZING INCLUDES ALL BACKER ROD & GLAZING SEALANTS**  
(Max Unit Size & Required Thickness - Per AAMA Guidelines)  
(Glazing Calculations Can Be Provided For Additional Cost)

**EXTRUDED ALUM. RAFTER**  
(2 1/2" Width - Depth/Reinforcement Per Acurlite P.E. Analysis)

**FORMED INTERIOR CLOSURE - OPTIONAL**  
(Consult Factory For Optional Thickness & Materials)

**SILL LUG**  
(Lug Size, Type & Locations Per Acurlite P.E. Analysis)

**EXTRUDED ALUM. PURLIN**  
(2 1/2" Width - Depth/Reinforcement Per Acurlite P.E. Analysis)

**SILICONE GASKET**

**ALUM. GLASS REST & SILICONE SETTING BLOCK**  
(Located At Quarter Points - 2 Per Bay)

**EXTRUDED ALUM. COVER CAP & PRESSURE CAP W/ GASKET**

**FORMED ANGLE SPACER - 1/16" ALUM. STANDARD**  
(Consult Factory For Optional Thickness & Materials)  
(Factory Applied To Purlin)

**FORMED EXTERIOR CLOSURE - 1/16" ALUM. STANDARD**  
(Consult Factory For Optional Thickness & Materials)  
(Typical Splice Shown As Dashed Line - Locate As Required)

**FORMED SILL PAN - 1/16" ALUM. STANDARD**  
(Consult Factory For Optional Thickness & Materials)

**SPONGE GASKET - FACTORY APPLIED TO SILL PAN**  
(3/4" Void At System Weep As Required)

## CURB / SUBSTRUCTURE BY OTHERS

**DETAILS / MATERIALS PER CONTRACT DOCUMENTS**  
(Not By Acurlite - Provided By Others)

**ISOLATION/WATERPROOF MEMBRANE**  
(Not By Acurlite - Provided By Others)

**PROPER SUBSTRATE REQUIRED FOR ATTACHMENT**  
(Not By Acurlite - Provided By Others)

## INSTALLATION

**FASTENERS PROVIDED BY ACURLITE**  
(Fastener Size & Type Per Acurlite P.E. Analysis Unless Noted)

**INSTALL GLAZING PER INDUSTRY STANDARDS**  
(Follow GANA Guidelines & Acurlite Installation Manual)

**USE SPECIFIED DOW CORNING SILICONE**  
(Per Acurlite P.E. Analysis & Installation Manual)

**FASTEN INTERIOR CLOSURE TO PURLIN / ANGLE**

**FASTEN PRESSURE CAP TO RAFTER & APPLY SEAL**

**SNAP ON COVER CAP**  
(Not Required For Water Tightness)

**FASTEN PURLIN ASSEMBLY TO RAFTER**

**FASTEN RAFTER ASSEMBLY TO LUGS - IF REQ.**

**FASTEN EXTERIOR CLOSURE TO ANGLE SPACER**  
(Use Pop Rivets As Required)

**FASTEN EXTERIOR CLOSURE TO SILL PAN**  
(Use #10 x 1/2" Pan Head S.M.S. - Locate 12" O.C. Typical)

**FASTEN SILL LUG TO CURB**  
(Seal In & Around Lug & Fastener)

**FULL BEARING SHIM - IF REQUIRED**  
(1/4" Max. Shim Space Typical - Unless Noted Otherwise)  
(Not by Acurlite - Provided By Others)

**INSTALL SILL PAN IN BED OF SEALANT**

## PLEASE NOTE

**CURB MUST RESIST ALL LOADS/REACTIONS IMPOSED BY SKYLIGHT**  
(Reactions Provided By Acurlite P.E.)  
(Responsible E.O.R. to Verify and Approve)

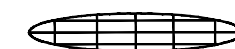
**CURB SHOULD BE PLUMB, LEVEL & SQUARE PER INDUSTRY STANDARD TOLERANCES**  
(Max Allowed  $\pm 1/8"$  PER 12' - 0" - Unless Noted Otherwise)  
(Not By Acurlite - Provided By Others)

**ALL ROOFING, TERMINATION BARS, REGLETS, COUNTER FLASHINGS & FLASHINGS NOT INTEGRAL TO SKYLIGHT SYSTEM FUNCTION**  
(Not By Acurlite - Provided By Others)

**D1** **VERT. SILL**  
**TYPICAL DETAIL**

## PLEASE NOTE

ALL DETAILS AS SHOWN ARE FOR REFERENCE ONLY AND SUBJECT TO CHANGE PER ACURLITE PROJECT PROPOSAL, SPECIFIC SITE CONDITIONS, ACURLITE P.E. ANALYSIS, AND GOVERNING CODE REQUIREMENTS.



**acurlite**  
**Structural Skylights, Inc.**

© NOV 30, 2017

570.759.6882 www.acurlite.com sales@acurlite.com

## STANDARD SYSTEM DETAILS

SCALE:

6" = 1' - 0"

DRAWN BY:

K.A.M.

CHECKED BY:

C.H.M.

DATE - ISSUE:

11/30/17 - A

SHEET:

D1

## OPTIONS FOR VISUAL ENHANCEMENT

**STANDARD & CUSTOM FINISHES**  
(Paint, Anodize & Powder Coat Available)

**SHADES/LOUVERS - PANELS - BIPV/DYNAMIC GLAZING**  
(Consult Factory For Your Project Specific Requirements)

**VARIABLE SLOPE - ALL PITCHES AVAILABLE**  
(Consult Factory - Based On Project Specific Conditions)

**INSULATED LAMINATED / LAMINATED GLAZING**  
**INCLUDES ALL BACKER ROD & GLAZING SEALANTS**  
(Max Unit Size & Required Thickness - Per AAMA Guidelines)  
(Glazing Calculations Provided For Additional Cost)

**SILICONE GASKET**

**STRUCTURAL SEAL FLANGE - IF REQUIRED**  
(Factory Applied To Purlin - 1/4-20 x 3/4" Flat Head Screw)

**EXTRUDED ALUMINUM PURLIN**  
(2 1/2" Width - Depth/Reinforcement Per Acurlite P.E. Analysis)

**FORMED EXTERIOR CLOSURE - 1/16" ALUM. STANDARD**  
(Consult Factory For Optional Thickness & Materials)  
(Typical Splice Shown As Dashed Line - Locate As Required)

## OPTIONS FOR THERMAL ENHANCEMENT

**DETAILS AS SHOWN ARE TYPICAL & FOR REFERENCE**  
(Consult Factory for Additional Modification & Performance Improvements)

**INSULATED CLOSURE - FOR ADDITIONAL COST**  
(Factory Assembly Includes Rigid Insulation & Formed Backer)

**MINERAL WOOL TO FILL VOIDS - FOR ADDITIONAL COST**  
(Standard Batt Type - Installer To Ensure System Weep Path Is NOT Blocked)

## INSTALLATION

**FASTENERS PROVIDED BY ACURLITE**  
(Fastener Size & Type Per Acurlite P.E. Analysis Unless Noted)

**INSTALL GLAZING PER INDUSTRY STANDARDS**  
(Follow GANA Guidelines & Acurlite Installation Manual)

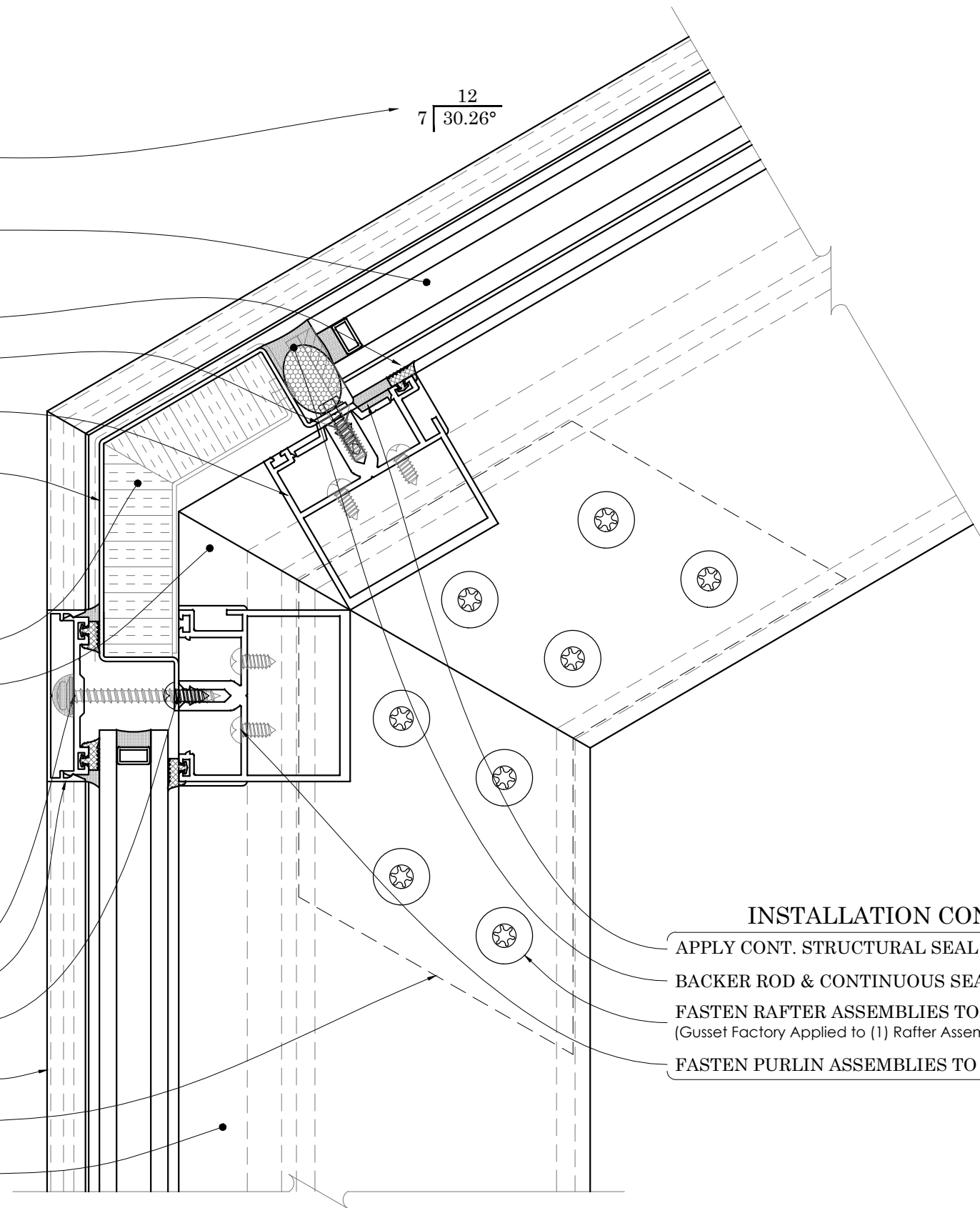
**USE SPECIFIED DOW CORNING SILICONE**  
(Per Acurlite P.E. Analysis & Installation Manual)

**FASTEN PRESSURE CAP TO RAFTER / PURLIN & APPLY SEAL**  
**SNAP ON COVER CAP**  
(Not Required For Water Tightness)

**FASTEN EXTERIOR CLOSURE TO PURLIN / FLANGE**

**EXTRUDED ALUM. COVER CAP & PRESSURE CAP W/ GASKET**  
**ALUMINUM GUSSET PLATES**  
(Size, Thickness & Type Per Acurlite P.E. Analysis)

**EXTRUDED ALUMINUM RAFTER**  
(2 1/2" Width - Depth/Reinforcement Per Acurlite P.E. Analysis)



## INSTALLATION CONTINUED

**APPLY CONT. STRUCTURAL SEAL - IF REQUIRED**

**BACKER ROD & CONTINUOUS SEAL**

**FASTEN RAFTER ASSEMBLIES TOGETHER - IF REQ.**  
(Gusset Factory Applied to (1) Rafter Assembly Of Each Pair)

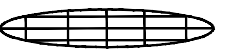
**FASTEN PURLIN ASSEMBLIES TO RAFTER ASSEMBLY**

D2

**KNEE**  
**TYPICAL DETAIL**

## PLEASE NOTE

ALL DETAILS AS SHOWN ARE FOR REFERENCE  
ONLY AND SUBJECT TO CHANGE PER  
ACURLITE PROJECT PROPOSAL, SPECIFIC SITE  
CONDITIONS, ACURLITE P.E. ANALYSIS, AND  
GOVERNING CODE REQUIREMENTS.



**acurlite**  
**Structural Skylights, Inc.**

© NOV 30, 2017

570.759.6882 www.acurlite.com sales@acurlite.com

**STANDARD**  
**SYSTEM**  
**DETAILS**

SCALE:  
**6" = 1' - 0"**

DRAWN BY:  
**K.A.M.**

CHECKED BY:  
**C.H.M.**

DATE - ISSUE:  
**11/30/17 - A**

SHEET:  
**D2**

OPTIONS FOR VISUAL ENHANCEMENT

STANDARD & CUSTOM FINISHES  
(Paint, Anodize & Powder Coat Available)

SHADES/LOUVERS - PANELS - BIPV/DYNAMIC GLAZING  
(Consult Factory For Your Project Specific Requirements)

VARIABLE SLOPE - ALL PITCHES AVAILABLE  
(Consult Factory - Based On Project Specific Conditions)

INSULATED LAMINATED / LAMINATED GLAZING  
INCLUDES ALL BACKER ROD & GLAZING SEALANTS  
(Max Unit Size & Required Thickness - Per AAMA Guidelines)  
(Glazing Calculations Can Be Provided For Additional Cost)

ALUM. GLASS REST & SILICONE SETTING BLOCK  
(Located At Quarter Points - 2 Per Bay)

STRUCTURAL SEAL FLANGE FASTENED TO PURLIN  
(Factory Applied To Purlin - 1/4-20 x 3/4" Flat Head Screw)

SILICONE GASKET

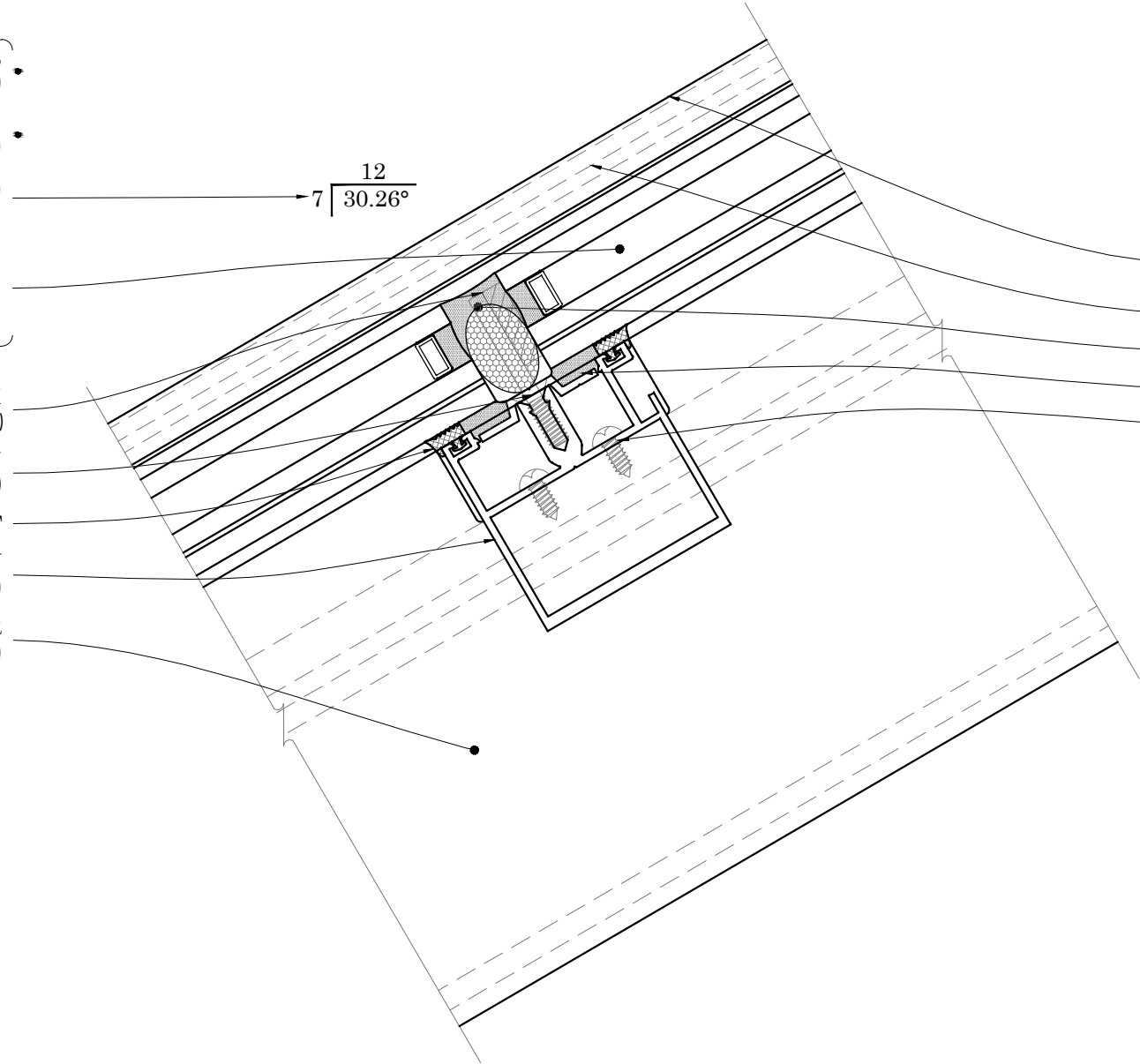
EXTRUDED ALUM. PURLIN  
(2 1/2" Width - Depth/Reinforcement Per Acurlite P.E. Analysis)

EXTRUDED ALUM. RAFTER  
(2 1/2" Width - Depth/Reinforcement Per Acurlite P.E. Analysis)

INSTALLATION

- FASTENERS PROVIDED BY ACURLITE  
(Fastener Size & Type Per Acurlite P.E. Analysis Unless Noted)
- INSTALL GLAZING PER INDUSTRY STANDARDS  
(Follow GANA Guidelines & Acurlite Installation Manual)
- USE SPECIFIED DOW CORNING SILICONE  
(Per Acurlite P.E. Analysis & Installation Manual)

- SNAP ON COVER CAP  
(Not Required For Water Tightness)
- FASTEN PRESSURE CAP TO RAFTER & APPLY SEAL
- BACKER ROD & CONTINUOUS SEAL
- APPLY CONT. STRUCTURAL SEAL - IF REQUIRED
- FASTEN PURLIN ASSEMBLY TO RAFTER



D3 PURLIN  
TYPICAL DETAIL

PLEASE NOTE

ALL DETAILS AS SHOWN ARE FOR REFERENCE  
ONLY AND SUBJECT TO CHANGE PER  
ACURLITE PROJECT PROPOSAL, SPECIFIC SITE  
CONDITIONS, ACURLITE P.E. ANALYSIS, AND  
GOVERNING CODE REQUIREMENTS.



acurlite  
Structural Skylights, Inc.  
www.acurlite.com sales@acurlite.com

© NOV 30, 2017

570.759.6882

STANDARD  
SYSTEM  
DETAILS

SCALE:  
6" = 1' - 0"

DRAWN BY:  
K.A.M.

CHECKED BY:  
C.H.M.

DATE - ISSUE:  
11/30/17 - A

SHEET:  
D3

## OPTIONS FOR THERMAL ENHANCEMENT

DETAILS AS SHOWN ARE TYPICAL & FOR REFERENCE  
(Consult Factory for Additional Modification & Performance Improvements)

MINERAL WOOL TO FILL VOIDS - FOR ADDITIONAL COST  
(Standard Batt Type - Installer To Ensure System Weep Path Is NOT Blocked)

FORMED EXTERIOR CLOSURE - 1/16" ALUM. STANDARD  
(Consult Factory For Optional Thickness & Materials)  
(Typical Splice Shown As Dashed Line - Locate As Required)

EXTRUDED ALUM. COVER CAP & PRESSURE CAP W/ GASKET

## OPTIONS FOR VISUAL ENHANCEMENT

STANDARD & CUSTOM FINISHES  
(Paint, Anodize & Powder Coat Available)

SHADES/LOUVERS - PANELS - BIPV/DYNAMIC GLAZING  
(Consult Factory For Your Project Specific Requirements)

VARIABLE SLOPE - ALL PITCHES AVAILABLE  
(Consult Factory - Based On Project Specific Conditions)

INSULATED LAMINATED / LAMINATED GLAZING  
INCLUDES ALL BACKER ROD & GLAZING SEALANTS  
(Max Unit Size & Required Thickness - Per AAMA Guidelines)  
(Glazing Calculations Provided For Additional Cost)

STRUCTURAL SEAL FLANGE - IF REQUIRED  
(Factory Applied To Purlin - 1/4-20 x 3/4" Flat Head Screw)

SILICONE GASKET

EXTRUDED ALUMINUM PURLIN  
(2 1/2" Width - Depth/Reinforcement Per Acurlite P.E. Analysis)

EXTRUDED ALUMINUM RAFTER  
(2 1/2" Width - Depth/Reinforcement Per Acurlite P.E. Analysis)

## PLEASE NOTE

CURB MUST RESIST ALL LOADS/REACTIONS  
IMPOSED BY SKYLIGHT  
(Reactions Provided By Acurlite P.E.)  
(Responsible E.O.R. to Verify and Approve)

CURB SHOULD BE PLUMB, LEVEL & SQUARE  
PER INDUSTRY STANDARD TOLERANCES  
(Max Allowed  $\pm 1/8"$  PER 12' - 0" - Unless Noted Otherwise)  
(Not By Acurlite - Provided By Others)

ALL ROOFING, TERMINATION BARS, REGLETS,  
COUNTER FLASHINGS & FLASHINGS NOT  
INTEGRAL TO SKYLIGHT SYSTEM FUNCTION  
(Not By Acurlite - Provided By Others)

## CURB / SUBSTRUCTURE BY OTHERS

DETAILS / MATERIALS PER CONTRACT DOCUMENTS  
(Not By Acurlite - Provided By Others)

ISOLATION/WATERPROOF MEMBRANE  
(Not By Acurlite - Provided By Others)

COUNTER FLASHING & REGLETS  
(Not By Acurlite - Provided By Others)

PROPER SUBSTRATE REQUIRED FOR ATTACHMENT  
(Not By Acurlite - Provided By Others)

## INSTALLATION

FASTENERS PROVIDED BY ACURLITE  
(Fastener Size & Type Per Acurlite P.E. Analysis Unless Noted)

INSTALL GLAZING PER INDUSTRY STANDARDS  
(Follow GANA Guidelines & Acurlite Installation Manual)

USE SPECIFIED DOW CORNING SILICONE  
(Per Acurlite P.E. Analysis & Installation Manual)

FASTEN EXTERIOR CLOSURE TO CURB  
(Shim & Seal As Required)

SNAP ON COVER CAP  
(Not Required For Water Tightness)

FASTEN PRESSURE CAP TO RAFTER & APPLY SEAL

BACKER ROD & CONTINUOUS SEAL

LAP MEMBRANE INTO SYSTEM  
(Not By Acurlite - Provided By Others)

FASTEN EXTERIOR CLOSURE TO PURLIN / FLANGE

APPLY CONT. STRUCTURAL SEAL - IF REQUIRED

FASTEN PURLIN ASSEMBLY TO RAFTER

FASTEN RAFTER ASSEMBLY TO LUGS - IF REQ.

FASTEN LUG TO CURB

FULL BEARING SHIM AS REQUIRED  
(1/4" Max. Shim Space Typical - Unless Noted Otherwise)  
(Not by Acurlite - Provided By Others)

FASTEN INTERIOR CLOSURE - 1/16" ALUM. STANDARD  
BETWEEN RAFTERS - IF REQUIRED / INCLUDED  
(Consult Factory For Optional Thickness & Materials)  
(Use Pop Rivets As Required)

INSTALL RIDGE PLATE

RIDGE LUG  
(Lug Size, Type & Locations Per Acurlite P.E. Analysis)

FORMED RIDGE PLATE - 1/16" ALUM. STANDARD  
(Consult Factory For Optional Thickness & Materials)

FORMED INTERIOR CLOSURE - 1/16" ALUM. STANDARD  
OPTIONAL - IF REQUIRED / INCLUDED  
(Consult Factory For Optional Thickness & Materials)

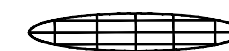
12  
7 30.26°

D4

HEAD  
TYPICAL DETAIL

## PLEASE NOTE

ALL DETAILS AS SHOWN ARE FOR REFERENCE  
ONLY AND SUBJECT TO CHANGE PER  
ACURLITE PROJECT PROPOSAL, SPECIFIC SITE  
CONDITIONS, ACURLITE P.E. ANALYSIS, AND  
GOVERNING CODE REQUIREMENTS.



**acurlite**  
Structural Skylights, Inc.

© NOV 30, 2017

570.759.6882 www.acurlite.com sales@acurlite.com

## STANDARD SYSTEM DETAILS

SCALE:

6" = 1' - 0"

DRAWN BY:

K.A.M.

CHECKED BY:

C.H.M.

DATE - ISSUE:

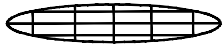
11/30/17 - A

SHEET:

D4

PLEASE NOTE

ALL DETAILS AS SHOWN ARE FOR REFERENCE ONLY AND SUBJECT TO CHANGE PER ACURLITE PROJECT PROPOSAL, SPECIFIC SITE CONDITIONS, ACURLITE P.E. ANALYSIS, AND GOVERNING CODE REQUIREMENTS.



**acurlite**  
Structural Skylights, Inc.

© NOV 30, 2017

570.759.6882 www.acurlite.com sales@acurlite.com

STANDARD  
SYSTEM  
DETAILS

SCALE:

6" = 1' - 0"

DRAWN BY:

K.A.M.

CHECKED BY:

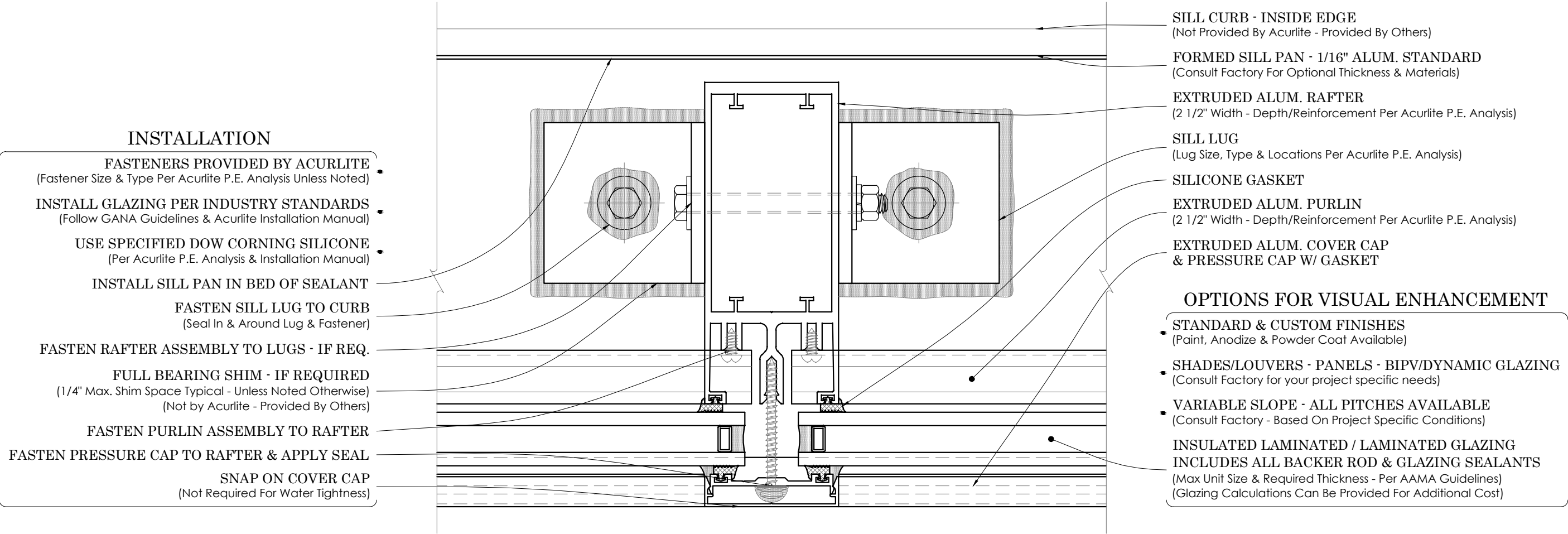
C.H.M.

DATE - ISSUE:

11/30/17 - A

SHEET:

D5

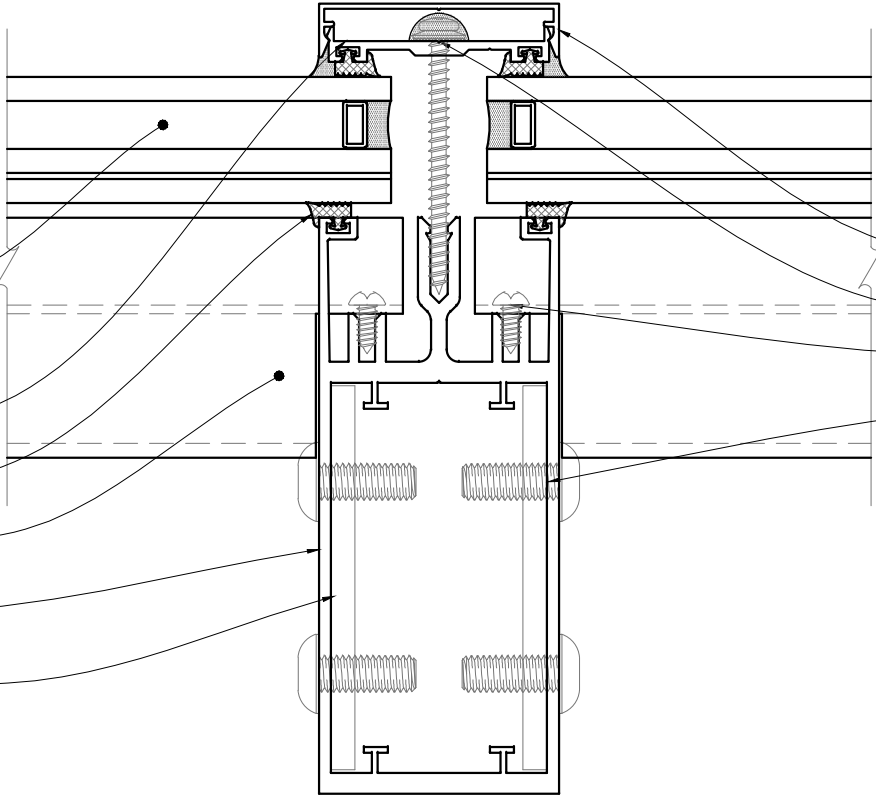


D5 VERT. RAFTER  
TYPICAL DETAIL

OPTIONS FOR VISUAL ENHANCEMENT

- STANDARD & CUSTOM FINISHES  
(Paint, Anodize & Powder Coat Available)
- SHADES/LOUVERS - PANELS - BIPV/DYNAMIC GLAZING  
(Consult Factory for your project specific needs)
- VARIABLE SLOPE - ALL PITCHES AVAILABLE  
(Consult Factory - Based On Project Specific Conditions)
- INSULATED LAMINATED / LAMINATED GLAZING  
INCLUDES ALL BACKER ROD & GLAZING SEALANTS  
(Max Unit Size & Required Thickness - Per AAMA Guidelines)  
(Glazing Calculations Can Be Provided For Additional Cost)

- EXTRUDED ALUM. COVER CAP  
& PRESSURE CAP W/ GASKET
- SILICONE GASKET
- EXTRUDED ALUM. PURLIN  
(2 1/2" Width - Depth/Reinforcement Per Acurlite P.E. Analysis)
- EXTRUDED ALUM. RAFTER  
(2 1/2" Width - Depth/Reinforcement Per Acurlite P.E. Analysis)
- ALUM. GUSSET PLATES  
(Size & Type Per Acurlite P.E. Analysis)



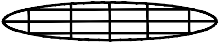
INSTALLATION

- FASTENERS PROVIDED BY ACURLITE  
(Fastener Size & Type Per Acurlite P.E. Analysis Unless Noted)
- INSTALL GLAZING PER INDUSTRY STANDARDS  
(Follow GANA Guidelines & Acurlite Installation Manual)
- USE SPECIFIED DOW CORNING SILICONE  
(Per Acurlite P.E. Analysis & Installation Manual)
- SNAP ON COVER CAP  
(Not Required for Water tightness)
- FASTEN PRESSURE CAP TO RAFTER & APPLY SEAL
- FASTEN PURLIN ASSEMBLY TO RAFTER
- FASTEN RAFTER ASSEMBLIES TOGETHER - IF REQ.  
(Gusset Factory Applied to (1) Rafter Assembly Of Each Pair)

D6 RAFTER  
TYPICAL DETAIL

PLEASE NOTE

ALL DETAILS AS SHOWN ARE FOR REFERENCE  
ONLY AND SUBJECT TO CHANGE PER  
ACURLITE PROJECT PROPOSAL, SPECIFIC SITE  
CONDITIONS, ACURLITE P.E. ANALYSIS, AND  
GOVERNING CODE REQUIREMENTS.



acurlite  
Structural Skylights, Inc.

© NOV 30, 2017

570.759.6882 www.acurlite.com sales@acurlite.com

STANDARD  
SYSTEM  
DETAILS

SCALE:  
6" = 1' - 0"

DRAWN BY:  
K.A.M.

CHECKED BY:  
C.H.M.

DATE - ISSUE:  
11/30/17 - A

SHEET:  
D6

SILL LUG  
(Lug Size, Type & Locations Per Acurlite P.E. Analysis)

FORMED SILL PAN CORNER - 1/16" ALUM. STANDARD  
(Consult Factory For Optional Thickness & Materials)

EXTRUDED ALUM. RAFTER  
(2 1/2" Width - Depth/Reinforcement Per Acurlite P.E. Analysis)

SILL CURB - INSIDE EDGE  
(Not Provided By Acurlite - Provided By Others)

### INSTALLATION

- FASTENERS PROVIDED BY ACURLITE  
(Fastener Size & Type Per Acurlite P.E. Analysis Unless Noted)
- INSTALL GLAZING PER INDUSTRY STANDARDS  
(Follow GANA Guidelines & Acurlite Installation Manual)
- USE SPECIFIED DOW CORNING SILICONE  
(Per Acurlite P.E. Analysis & Installation Manual)
- INSTALL SILL PAN CORNER IN BED OF SEALANT
- SNAP ON COVER CAP  
(Not Required For Water Tightness)
- FASTEN PRESSURE CAP TO RAFTER & APPLY SEAL
- FASTEN SILL LUG TO CURB  
(Seal In & Around Lug & Fastener)
- FULL BEARING SHIM - IF REQUIRED  
(1/4" Max. Shim Space Typical - Unless Noted Otherwise)  
(Not by Acurlite - Provided By Others)
- FASTEN RAFTER ASSEMBLY TO LUGS - IF REQ.
- FASTEN PURLIN ASSEMBLY TO RAFTER
- FASTEN CLOSURE TO RAFTER

EXTRUDED ALUM. PURLIN  
(2 1/2" Width - Depth/Reinforcement Per Acurlite P.E. Analysis)

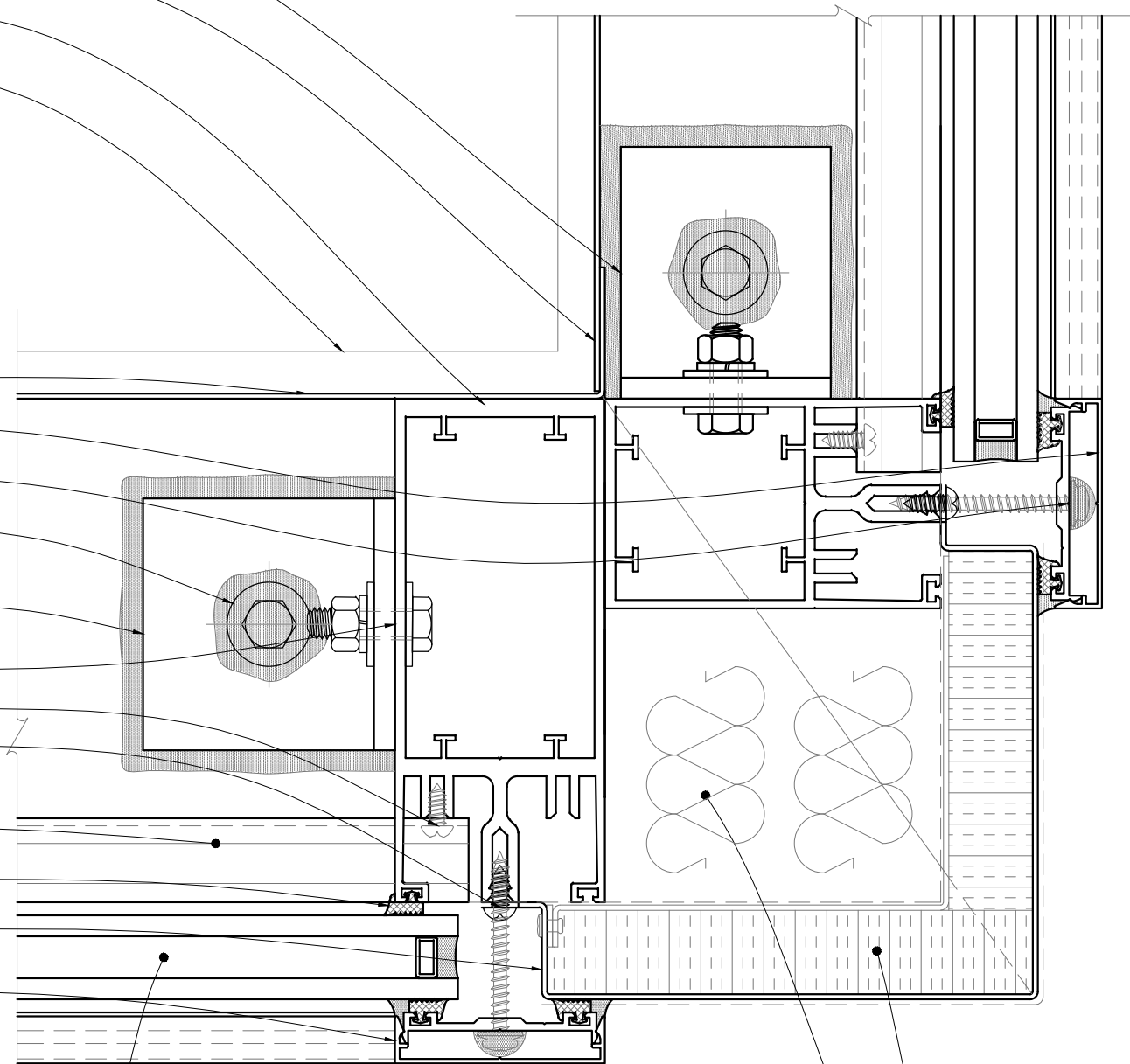
SILICONE GASKET

FORMED EXTERIOR CLOSURE - 1/16" ALUM. STANDARD  
(Consult Factory For Optional Thickness & Materials)

EXTRUDED ALUM. COVER CAP  
& PRESSURE CAP W/ GASKET

### OPTIONS FOR VISUAL ENHANCEMENT

- STANDARD & CUSTOM FINISHES  
(Paint, Anodize & Powder Coat Available)
- SHADES/LOUVERS - PANELS - BIPV/DYNAMIC GLAZING  
(Consult Factory for your project specific needs)
- VARIABLE SLOPE - ALL PITCHES AVAILABLE  
(Consult Factory - Based On Project Specific Conditions)
- INSULATED LAMINATED / LAMINATED GLAZING  
INCLUDES ALL BACKER ROD & GLAZING SEALANTS  
(Max Unit Size & Required Thickness - Per AAMA Guidelines)



### OPTIONS FOR THERMAL ENHANCEMENT

- DETAILS AS SHOWN ARE TYPICAL & FOR REFERENCE  
(Consult Factory for Additional Modification & Performance Improvements)
- INSULATED CLOSURE - FOR ADDITIONAL COST  
(Factory Assembly Includes Rigid Insulation & Formed Alum. Backer)
- MINERAL WOOL TO FILL VOIDS - FOR ADDITIONAL COST  
(Standard Detail Includes Backer Rod & Sealant - Mineral Wool Not Shown)

**D7** GABLE CORNER  
TYPICAL DETAIL

### PLEASE NOTE

ALL DETAILS AS SHOWN ARE FOR REFERENCE  
ONLY AND SUBJECT TO CHANGE PER  
ACURLITE PROJECT PROPOSAL, SPECIFIC SITE  
CONDITIONS, ACURLITE P.E. ANALYSIS, AND  
GOVERNING CODE REQUIREMENTS.

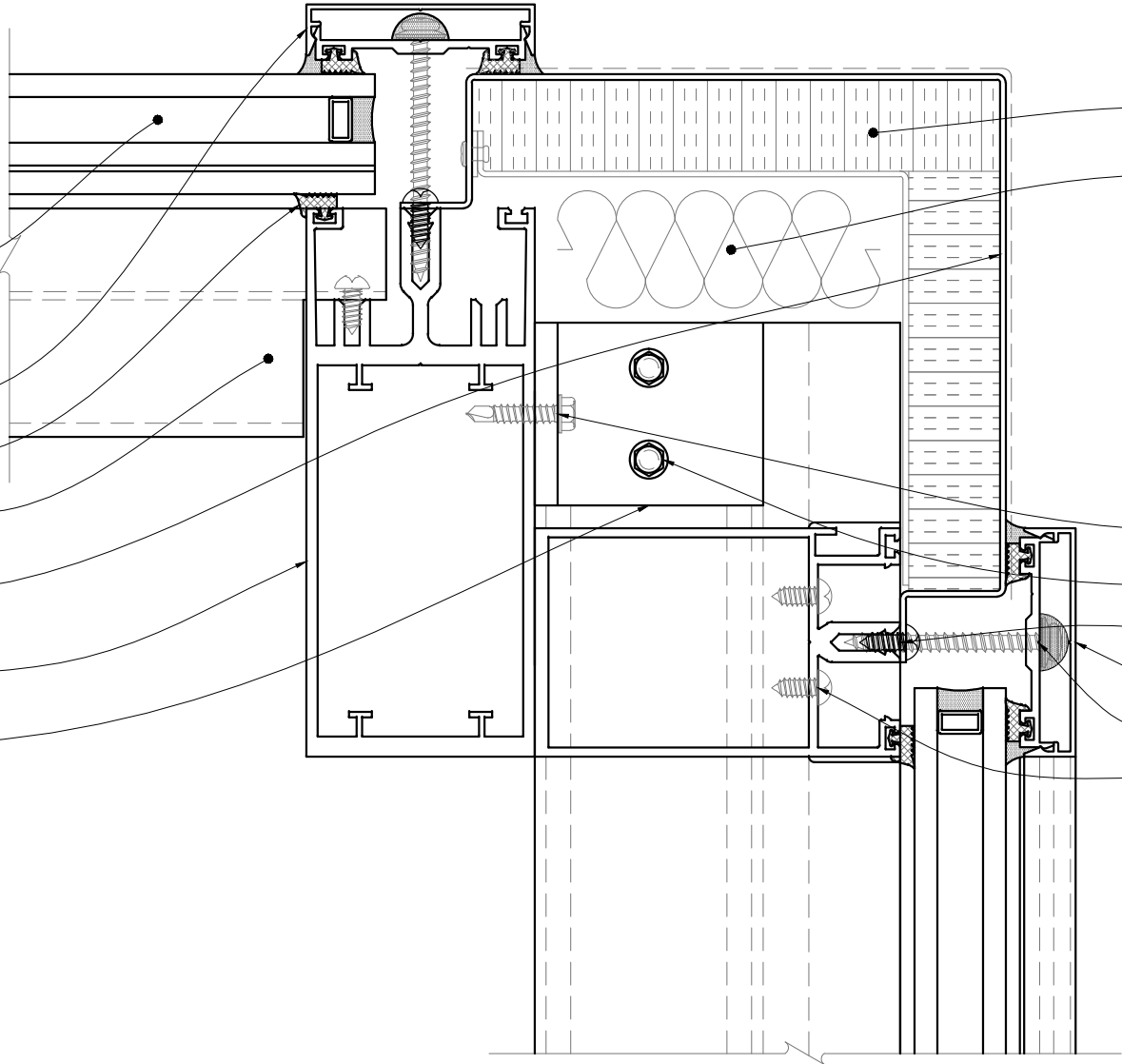
  
**acurlite**  
Structural Skylights, Inc.  
© NOV 30, 2017  
570.759.6882    www.acurlite.com    sales@acurlite.com

### STANDARD SYSTEM DETAILS

SCALE:	6" = 1' - 0"
DRAWN BY:	K.A.M.
CHECKED BY:	C.H.M.
DATE - ISSUE:	11/30/17 - A
SHEET:	D7

OPTIONS FOR VISUAL ENHANCEMENT

- STANDARD & CUSTOM FINISHES  
(Paint, Anodize & Powder Coat Available)
- SHADES/LOUVERS - PANELS - BIPV/DYNAMIC GLAZING  
(Consult Factory for your project specific needs)
- VARIABLE SLOPE - ALL PITCHES AVAILABLE  
(Consult Factory - Based On Project Specific Conditions)
- INSULATED LAMINATED / LAMINATED GLAZING  
INCLUDES ALL BACKER ROD & GLAZING SEALANTS  
(Max Unit Size & Required Thickness - Per AAMA Guidelines)  
(Glazing Calculations Can Be Provided For Additional Cost)
- EXTRUDED ALUM. COVER CAP  
& PRESSURE CAP W/ GASKET
- SILICONE GASKET
- EXTRUDED ALUM. PURLIN  
(2 1/2" Width - Depth/Reinforcement Per Acurlite P.E. Analysis)
- FORMED EXTERIOR CLOSURE - 1/16" ALUM. STANDARD  
(Consult Factory For Optional Thickness & Materials)  
(Typical Splice Shown As Dashed Line - Locate As Required)
- EXTRUDED ALUM. RAFTER  
(2 1/2" Width - Depth/Reinforcement Per Acurlite P.E. Analysis)
- GABLE HEAD LUG  
(Lug Size, Type & Locations Per Acurlite P.E. Analysis)



OPTIONS FOR THERMAL ENHANCEMENT

- DETAILS AS SHOWN ARE TYPICAL & FOR REFERENCE  
(Consult Factory for Additional Modification & Performance Improvements)
- INSULATED CLOSURE - FOR ADDITIONAL COST  
(Factory Assembly Includes Rigid Insulation & Formed Alum. Backer)
- MINERAL WOOL TO FILL VOIDS - FOR ADDITIONAL COST  
(Standard Batt Type - Installer To Ensure System Weep Path Is NOT Blocked)

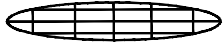
INSTALLATION

- FASTENERS PROVIDED BY ACURLITE  
(Fastener Size & Type Per Acurlite P.E. Analysis Unless Noted)
- INSTALL GLAZING PER INDUSTRY STANDARDS  
(Follow GANA Guidelines & Acurlite Installation Manual)
- USE SPECIFIED DOW CORNING SILICONE  
(Per Acurlite P.E. Analysis & Installation Manual)
- FASTEN HEAD LUG TO RAFTER  
(Seal In & Around Lug & Fastener)
- FASTEN RAFTER ASSEMBLY TO LUGS - IF REQ.
- FASTEN EXTERIOR CLOSURE TO PURLIN / FLANGE
- SNAP ON COVER CAP  
(Not Required For Water Tightness)
- FASTEN PRESSURE CAP TO RAFTER & APPLY SEAL
- FASTEN PURLIN ASSEMBLY TO RAFTER

D8 GABLE HEAD  
TYPICAL DETAIL

PLEASE NOTE

ALL DETAILS AS SHOWN ARE FOR REFERENCE  
ONLY AND SUBJECT TO CHANGE PER  
ACURLITE PROJECT PROPOSAL, SPECIFIC SITE  
CONDITIONS, ACURLITE P.E. ANALYSIS, AND  
GOVERNING CODE REQUIREMENTS.



**acurlite**  
Structural Skylights, Inc.

© NOV 30, 2017

570.759.6882    www.acurlite.com    sales@acurlite.com

STANDARD  
SYSTEM  
DETAILS

SCALE:  
6" = 1' - 0"

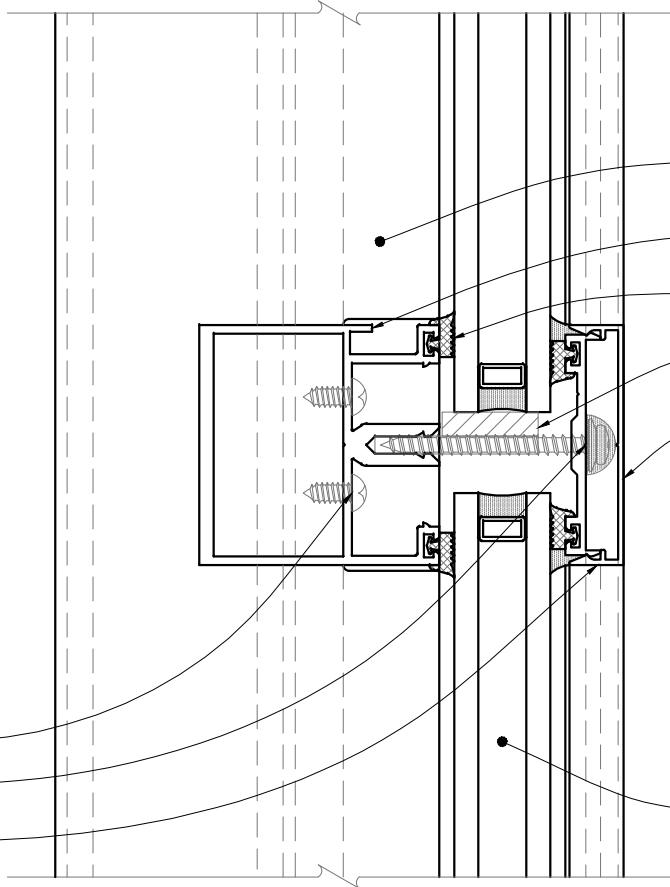
DRAWN BY:  
K.A.M.

CHECKED BY:  
C.H.M.

DATE - ISSUE:  
11/30/17 - A

SHEET:  
D8

- INSTALLATION**
- FASTENERS PROVIDED BY ACURLITE  
(Fastener Size & Type Per Acurlite P.E. Analysis Unless Noted)
  - INSTALL GLAZING PER INDUSTRY STANDARDS  
(Follow GANA Guidelines & Acurlite Installation Manual)
  - USE SPECIFIED DOW CORNING SILICONE  
(Per Acurlite P.E. Analysis & Installation Manual)
  - FASTEN PURLIN ASSEMBLY TO RAFTER
  - FASTEN PRESSURE CAP TO RAFTER & APPLY SEAL
  - SNAP ON COVER CAP  
(Not Required For Water Tightness)



- EXTRUDED ALUM. RAFTER  
(2 1/2" Width - Depth/Reinforcement Per Acurlite P.E. Analysis)
- EXTRUDED ALUM. PURLIN  
(2 1/2" Width - Depth/Reinforcement Per Acurlite P.E. Analysis)
- SILICONE GASKET
- ALUM. GLASS REST & SILICONE SETTING BLOCK  
(Located At Quarter Points - 2 Per Bay)
- EXTRUDED ALUM. COVER CAP  
& PRESSURE CAP W/ GASKET

- OPTIONS FOR VISUAL ENHANCEMENT**
- STANDARD & CUSTOM FINISHES  
(Paint, Anodize & Powder Coat Available)
  - SHADES/LOUVERS - PANELS - BIPV/DYNAMIC GLAZING  
(Consult Factory for your project specific needs)
  - VARIABLE SLOPE - ALL PITCHES AVAILABLE  
(Consult Factory - Based On Project Specific Conditions)
  - INSULATED LAMINATED / LAMINATED GLAZING  
INCLUDES ALL BACKER ROD & GLAZING SEALANTS  
(Max Unit Size & Required Thickness - Per AAMA Guidelines)  
(Glazing Calculations Can Be Provided For Additional Cost)

**D9** GABLE PURLIN  
TYPICAL DETAIL

**PLEASE NOTE**

ALL DETAILS AS SHOWN ARE FOR REFERENCE  
ONLY AND SUBJECT TO CHANGE PER  
ACURLITE PROJECT PROPOSAL, SPECIFIC SITE  
CONDITIONS, ACURLITE P.E. ANALYSIS, AND  
GOVERNING CODE REQUIREMENTS.



**acurlite**  
Structural Skylights, Inc.

© NOV 30, 2017

570.759.6882    www.acurlite.com    sales@acurlite.com

**STANDARD  
SYSTEM  
DETAILS**

SCALE:  
6" = 1' - 0"

DRAWN BY:  
K.A.M.

CHECKED BY:  
C.H.M.

DATE - ISSUE:  
11/30/17 - A

SHEET:  
D9

## INSTALLATION

**FASTENERS PROVIDED BY ACURLITE**  
(Fastener Size & Type Per Acurlite P.E. Analysis Unless Noted)

**INSTALL GLAZING PER INDUSTRY STANDARDS**  
(Follow GANA Guidelines & Acurlite Installation Manual)

**USE SPECIFIED DOW CORNING SILICONE**  
(Per Acurlite P.E. Analysis & Installation Manual)

**FASTEN PRESSURE CAP TO RAFTER & APPLY SEAL**  
**SNAP ON COVER CAP**  
(Not Required For Water Tightness)

**FASTEN PURLIN ASSEMBLY TO RAFTER**  
**FASTEN RAFTER ASSEMBLY TO LUGS - IF REQ.**

**FASTEN EXTERIOR CLOSURE TO ANGLE SPACER**  
(Use Pop Rivets As Required)

**FASTEN EXTERIOR CLOSURE TO SILL PAN**  
(Use #10 x 1/2" Pan Head S.M.S. - Locate 12" O.C. Typical)

**FASTEN SILL LUG TO CURB**  
(Seal In & Around Lug & Fastener)

**FULL BEARING SHIM - IF REQUIRED**  
(1/4" Max. Shim Space Typical - Unless Noted Otherwise)  
(Not by Acurlite - Provided By Others)

**INSTALL SILL PAN IN BED OF SEALANT**

## PLEASE NOTE

**CURB MUST RESIST ALL LOADS/REACTIONS  
IMPOSED BY SKYLIGHT**  
(Reactions Provided By Acurlite P.E.)  
(Responsible E.O.R. to Verify and Approve)

**CURB SHOULD BE PLUMB, LEVEL & SQUARE  
PER INDUSTRY STANDARD TOLERANCES**  
(Max Allowed  $\pm 1/8"$  PER 12' - 0" - Unless Noted Otherwise)  
(Not By Acurlite - Provided By Others)

**ALL ROOFING, TERMINATION BARS, REGLETS,  
COUNTER FLASHINGS & FLASHINGS NOT  
INTEGRAL TO SKYLIGHT SYSTEM FUNCTION**  
(Not By Acurlite - Provided By Others)

## OPTIONS FOR VISUAL ENHANCEMENT

- STANDARD & CUSTOM FINISHES**  
(Paint, Anodize & Powder Coat Available)
- SHADES/LOUVERS - PANELS - BIPV/DYNAMIC GLAZING**  
(Consult Factory for your project specific needs)
- VARIABLE SLOPE - ALL PITCHES AVAILABLE**  
(Consult Factory - Based On Project Specific Conditions)

**INSULATED LAMINATED / LAMINATED GLAZING**  
**INCLUDES ALL BACKER ROD & GLAZING SEALANTS**  
(Max Unit Size & Required Thickness - Per AAMA Guidelines)  
(Glazing Calculations Can Be Provided For Additional Cost)

**EXTRUDED ALUM. RAFTER**  
(2 1/2" Width - Depth/Reinforcement Per Acurlite P.E. Analysis)

**SILL LUG**  
(Lug Size, Type & Locations Per Acurlite P.E. Analysis)

**EXTRUDED ALUM. PURLIN**  
(2 1/2" Width - Depth/Reinforcement Per Acurlite P.E. Analysis)

**SILICONE GASKET**

**ALUM. GLASS REST & SILICONE SETTING BLOCK**  
(Located At Quarter Points - 2 Per Bay)

**EXTRUDED ALUM. COVER CAP  
& PRESSURE CAP W/ GASKET**

**FORMED ANGLE SPACER - 1/16" ALUM. STANDARD**  
(Consult Factory For Optional Thickness & Materials)  
(Factory Applied To Purlin)

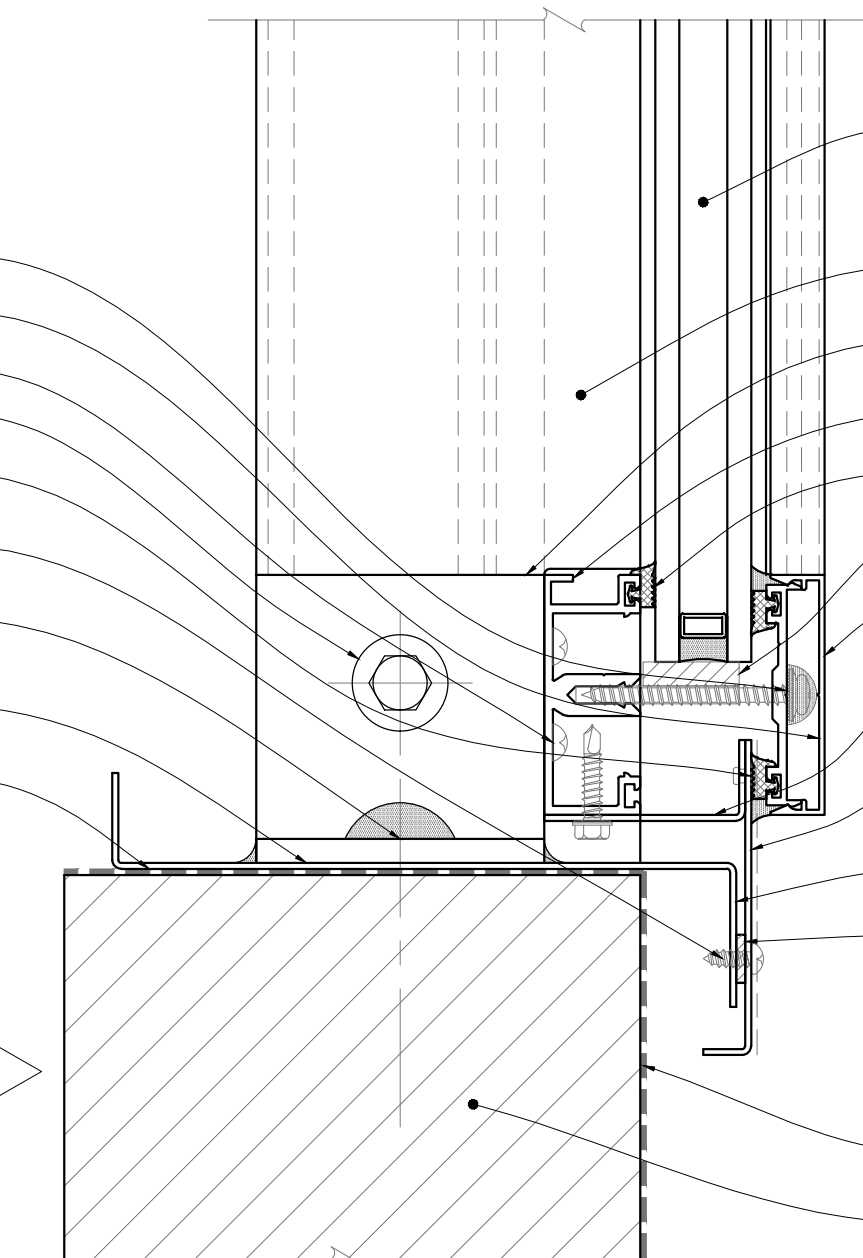
**FORMED EXTERIOR CLOSURE - 1/16" ALUM. STANDARD**  
(Consult Factory For Optional Thickness & Materials)  
(Typical Splice Shown As Dashed Line - Locate As Required)

**FORMED SILL PAN - 1/16" ALUM. STANDARD**  
(Consult Factory For Optional Thickness & Materials)

**SPONGE GASKET - FACTORY APPLIED TO SILL PAN**  
(3/4" Void At System Weep As Required)

## CURB / SUBSTRUCTURE BY OTHERS

- DETAILS / MATERIALS PER CONTRACT DOCUMENTS**  
(Not By Acurlite - Provided By Others)
- ISOLATION/WATERPROOF MEMBRANE**  
(Not By Acurlite - Provided By Others)
- PROPER SUBSTRATE REQUIRED FOR ATTACHMENT**  
(Not By Acurlite - Provided By Others)



D10

## GABLE SILL TYPICAL DETAIL

## PLEASE NOTE

ALL DETAILS AS SHOWN ARE FOR REFERENCE  
ONLY AND SUBJECT TO CHANGE PER  
ACURLITE PROJECT PROPOSAL, SPECIFIC SITE  
CONDITIONS, ACURLITE P.E. ANALYSIS, AND  
GOVERNING CODE REQUIREMENTS.



**acurlite**  
Structural Skylights, Inc.

© NOV 30, 2017

570.759.6882 www.acurlite.com sales@acurlite.com

## STANDARD SYSTEM DETAILS

SCALE:

6" = 1' - 0"

DRAWN BY:

K.A.M.

CHECKED BY:

C.H.M.

DATE - ISSUE:

11/30/17 - A

SHEET:

D10

SILL CURB - INSIDE EDGE  
(Not Provided By Acurlite - Provided By Others)

FORMED SILL PAN - 1/16" ALUM. STANDARD  
(Consult Factory For Optional Thickness & Materials)

EXTRUDED ALUM. RAFTER  
(2 1/2" Width - Depth/Reinforcement Per Acurlite P.E. Analysis)

SILL LUG  
(Lug Size, Type & Locations Per Acurlite P.E. Analysis)

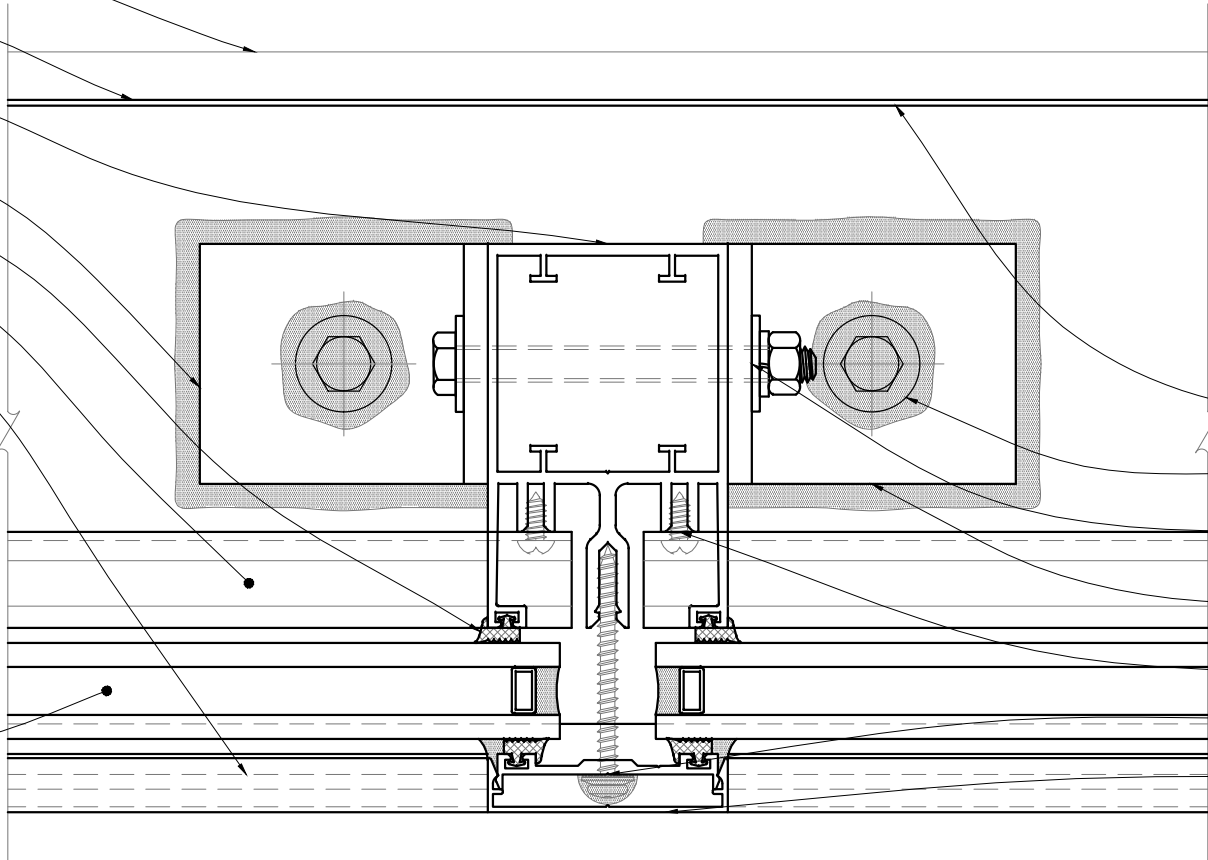
SILICONE GASKET

EXTRUDED ALUM. PURLIN  
(2 1/2" Width - Depth/Reinforcement Per Acurlite P.E. Analysis)

EXTRUDED ALUM. COVER CAP  
& PRESSURE CAP W/ GASKET

OPTIONS FOR VISUAL ENHANCEMENT

- STANDARD & CUSTOM FINISHES  
(Paint, Anodize & Powder Coat Available)
- SHADES/LOUVERS - PANELS - BIPV/DYNAMIC GLAZING  
(Consult Factory for your project specific needs)
- VARIABLE SLOPE - ALL PITCHES AVAILABLE  
(Consult Factory - Based On Project Specific Conditions)
- INSULATED LAMINATED / LAMINATED GLAZING  
INCLUDES ALL BACKER ROD & GLAZING SEALANTS  
(Max Unit Size & Required Thickness - Per AAMA Guidelines)  
(Glazing Calculations Can Be Provided For Additional Cost)



INSTALLATION

- FASTENERS PROVIDED BY ACURLITE  
(Fastener Size & Type Per Acurlite P.E. Analysis Unless Noted)
- INSTALL GLAZING PER INDUSTRY STANDARDS  
(Follow GANA Guidelines & Acurlite Installation Manual)
- USE SPECIFIED DOW CORNING SILICONE  
(Per Acurlite P.E. Analysis & Installation Manual)
- INSTALL SILL PAN IN BED OF SEALANT
- FASTEN SILL LUG TO CURB  
(Seal In & Around Lug & Fastener)
- FASTEN RAFTER ASSEMBLY TO LUGS - IF REQ.
- FULL BEARING SHIM - IF REQUIRED  
(1/4" Max. Shim Space Typical - Unless Noted Otherwise)  
(Not by Acurlite - Provided By Others)
- FASTEN PURLIN ASSEMBLY TO RAFTER
- FASTEN PRESSURE CAP TO RAFTER & APPLY SEAL
- SNAP ON COVER CAP  
(Not Required For Water Tightness)

D11 GABLE POST  
TYPICAL DETAIL

PLEASE NOTE

ALL DETAILS AS SHOWN ARE FOR REFERENCE  
ONLY AND SUBJECT TO CHANGE PER  
ACURLITE PROJECT PROPOSAL, SPECIFIC SITE  
CONDITIONS, ACURLITE P.E. ANALYSIS, AND  
GOVERNING CODE REQUIREMENTS.

acurlite  
Structural Skylights, Inc.

© NOV 30, 2017

570.759.6882 www.acurlite.com sales@acurlite.com

STANDARD  
SYSTEM  
DETAILS

SCALE:  
6" = 1' - 0"

DRAWN BY:  
K.A.M.

CHECKED BY:  
C.H.M.

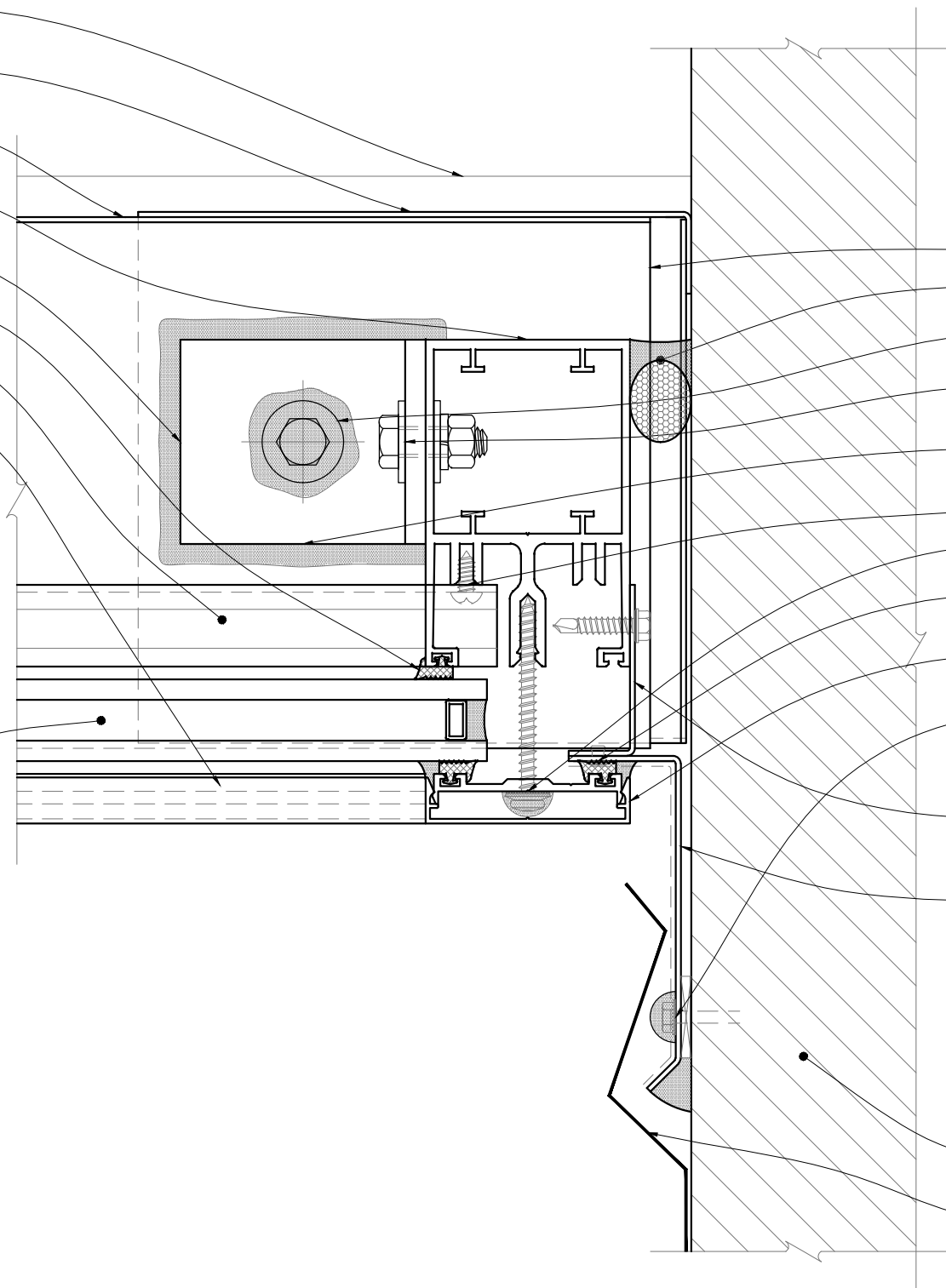
DATE - ISSUE:  
11/30/17 - A

SHEET:  
D11

- SILL CURB - INSIDE EDGE**  
(Not Provided By Acurlite - Provided By Others)
- FORMED END DAM - 1/16" ALUM. STANDARD**  
(Consult Factory For Optional Thickness & Materials)
- FORMED SILL PAN - 1/16" ALUM. STANDARD**  
(Consult Factory For Optional Thickness & Materials)
- EXTRUDED ALUM. RAFTER**  
(2 1/2" Width - Depth/Reinforcement Per Acurlite P.E. Analysis)
- SILL LUG**  
(Lug Size, Type & Locations Per Acurlite P.E. Analysis)
- SILICONE GASKET**
- EXTRUDED ALUM. PURLIN**  
(2 1/2" Width - Depth/Reinforcement Per Acurlite P.E. Analysis)
- EXTRUDED ALUM. COVER CAP & PRESSURE CAP W/ GASKET**
- OPTIONS FOR VISUAL ENHANCEMENT**
- STANDARD & CUSTOM FINISHES  
(Paint, Anodize & Powder Coat Available)
  - SHADES/LOUVERS - PANELS - BIPV/DYNAMIC GLAZING  
(Consult Factory for your project specific needs)
  - VARIABLE SLOPE - ALL PITCHES AVAILABLE  
(Consult Factory - Based On Project Specific Conditions)
  - INSULATED LAMINATED / LAMINATED GLAZING  
INCLUDES ALL BACKER ROD & GLAZING SEALANTS  
(Max Unit Size & Required Thickness - Per AAMA Guidelines)  
(Glazing Calculations Can Be Provided For Additional Cost)

#### PLEASE NOTE

- CURB MUST RESIST ALL LOADS/REACTIONS IMPOSED BY SKYLIGHT**  
(Reactions Provided By Acurlite P.E.)  
(Responsible E.O.R. to Verify and Approve)
- CURB SHOULD BE PLUMB, LEVEL & SQUARE PER INDUSTRY STANDARD TOLERANCES**  
(Max Allowed  $\pm 1/8"$  PER 12' - 0" - Unless Noted Otherwise)  
(Not By Acurlite - Provided By Others)
- ALL ROOFING, TERMINATION BARS, REGLETS, COUNTER FLASHINGS & FLASHINGS NOT INTEGRAL TO SKYLIGHT SYSTEM FUNCTION**  
(Not By Acurlite - Provided By Others)



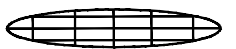
#### INSTALLATION

- FASTENERS PROVIDED BY ACURLITE**  
(Fastener Size & Type Per Acurlite P.E. Analysis Unless Noted)
  - INSTALL GLAZING PER INDUSTRY STANDARDS**  
(Follow GANA Guidelines & Acurlite Installation Manual)
  - USE SPECIFIED DOW CORNING SILICONE**  
(Per Acurlite P.E. Analysis & Installation Manual)
- INSTALL END DAM & SILL PAN IN BED OF SEALANT**
- BACKER ROD & CONTINUOUS SEAL**
- FASTEN SILL LUG TO CURB**  
(Seal In & Around Lug & Fastener)
- FASTEN RAFTER ASSEMBLY TO LUGS - IF REQ.**
- FULL BEARING SHIM - IF REQUIRED**  
(1/4" Max. Shim Space Typical - Unless Noted Otherwise)  
(Not by Acurlite - Provided By Others)
- FASTEN PURLIN ASSEMBLY TO RAFTER**
- FASTEN PRESSURE CAP TO RAFTER & APPLY SEAL**
- FASTEN EXTERIOR CLOSURE TO ANGLE SPACER**  
(Not By Acurlite - Provided By Others)
- SNAP ON COVER CAP**  
(Not Required For Water Tightness)
- FASTEN EXTERIOR CLOSURE TO CURB**  
(Shim & Seal As Required)
- FORMED ANGLE SPACER - 1/16" ALUM. STANDARD**  
(Consult Factory For Optional Thickness & Materials)  
(Factory Applied To Rafter)
- FORMED EXTERIOR CLOSURE - 1/16" ALUM. STANDARD**  
(Consult Factory For Optional Thickness & Materials)  
(Typical Splice Shown As Dashed Line - Locate As Required)
- CURB / SUBSTRUCTURE BY OTHERS**
- DETAILS / MATERIALS PER CONTRACT DOCUMENTS**  
(Not By Acurlite - Provided By Others)
  - ISOLATION/WATERPROOF MEMBRANE**  
(Not By Acurlite - Provided By Others)
  - PROPER SUBSTRATE REQUIRED FOR ATTACHMENT**  
(Not By Acurlite - Provided By Others)
  - COUNTER FLASHING & REGLETS**  
(Not By Acurlite - Provided By Others)

**D12** **GABLE JAMB**  
**TYPICAL DETAIL**

#### PLEASE NOTE

ALL DETAILS AS SHOWN ARE FOR REFERENCE  
ONLY AND SUBJECT TO CHANGE PER  
ACURLITE PROJECT PROPOSAL, SPECIFIC SITE  
CONDITIONS, ACURLITE P.E. ANALYSIS, AND  
GOVERNING CODE REQUIREMENTS.



**acurlite**  
Structural Skylights, Inc.

© NOV 30, 2017

570.759.6882 www.acurlite.com sales@acurlite.com

#### STANDARD SYSTEM DETAILS

SCALE:

6" = 1' - 0"

DRAWN BY:

K.A.M.

CHECKED BY:

C.H.M.

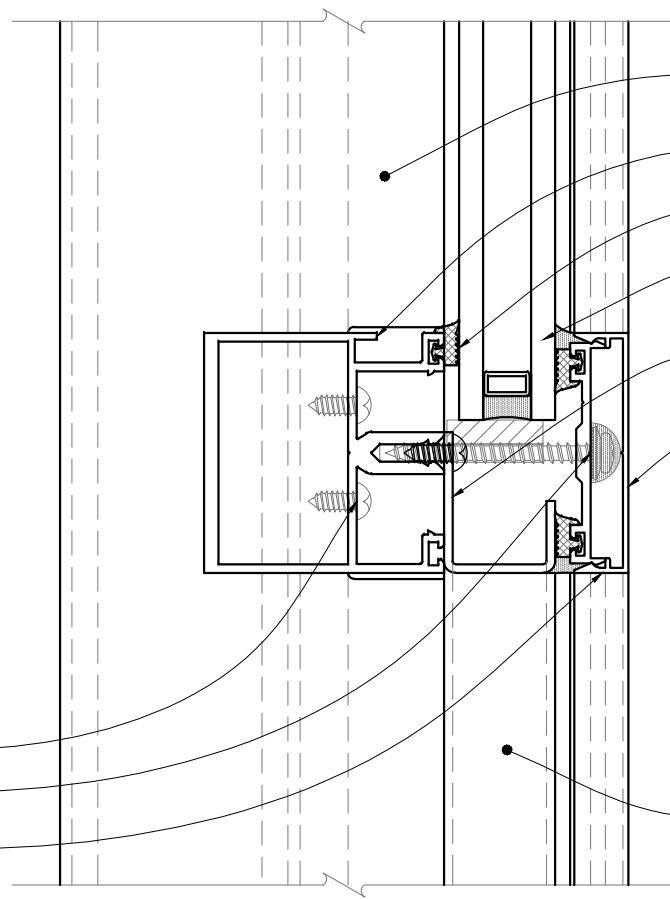
DATE - ISSUE:

11/30/17 - A

SHEET:

D12

- INSTALLATION**
- FASTENERS PROVIDED BY ACURLITE  
(Fastener Size & Type Per Acurlite P.E. Analysis Unless Noted)
  - INSTALL GLAZING PER INDUSTRY STANDARDS  
(Follow GANA Guidelines & Acurlite Installation Manual)
  - USE SPECIFIED DOW CORNING SILICONE  
(Per Acurlite P.E. Analysis & Installation Manual)
  - FASTEN PURLIN ASSEMBLY TO RAFTER
  - FASTEN PRESSURE CAP TO RAFTER & APPLY SEAL
  - SNAP ON COVER CAP  
(Not Required For Water Tightness)



- EXTRUDED ALUM. RAFTER**  
(2 1/2" Width - Depth/Reinforcement Per Acurlite P.E. Analysis)
- EXTRUDED ALUM. PURLIN**  
(2 1/2" Width - Depth/Reinforcement Per Acurlite P.E. Analysis)
- SILICONE GASKET**
- ALUM. GLASS REST & SILICONE SETTING BLOCK**  
(Located At Quarter Points - 2 Per Bay)
- FORMED POCKET FILLER**  
(Factory Applied To Purlin - Consult Factory For Optional Thickness & Materials)  
(Vents, Windows, Doors & Other Infill Not By Acurlite - Provided By Others)
- EXTRUDED ALUM. COVER CAP & PRESSURE CAP W/ GASKET**
- OPTIONS FOR VISUAL ENHANCEMENT**
- STANDARD & CUSTOM FINISHES  
(Paint, Anodize & Powder Coat Available)
  - SHADES/LOUVERS - PANELS - BIPV/DYNAMIC GLAZING  
(Consult Factory for your project specific needs)
  - VARIABLE SLOPE - ALL PITCHES AVAILABLE  
(Consult Factory - Based On Project Specific Conditions)
- INSULATED LAMINATED / LAMINATED GLAZING**  
INCLUDES ALL BACKER ROD & GLAZING SEALANTS  
(Max Unit Size & Required Thickness - Per AAMA Guidelines)  
(Glazing Calculations Can Be Provided For Additional Cost)

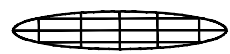
**VERT. PUNCHED  
OPENING**

**D13**

**OPTIONAL DETAIL**

**PLEASE NOTE**

ALL DETAILS AS SHOWN ARE FOR REFERENCE  
ONLY AND SUBJECT TO CHANGE PER  
ACURLITE PROJECT PROPOSAL, SPECIFIC SITE  
CONDITIONS, ACURLITE P.E. ANALYSIS, AND  
GOVERNING CODE REQUIREMENTS.



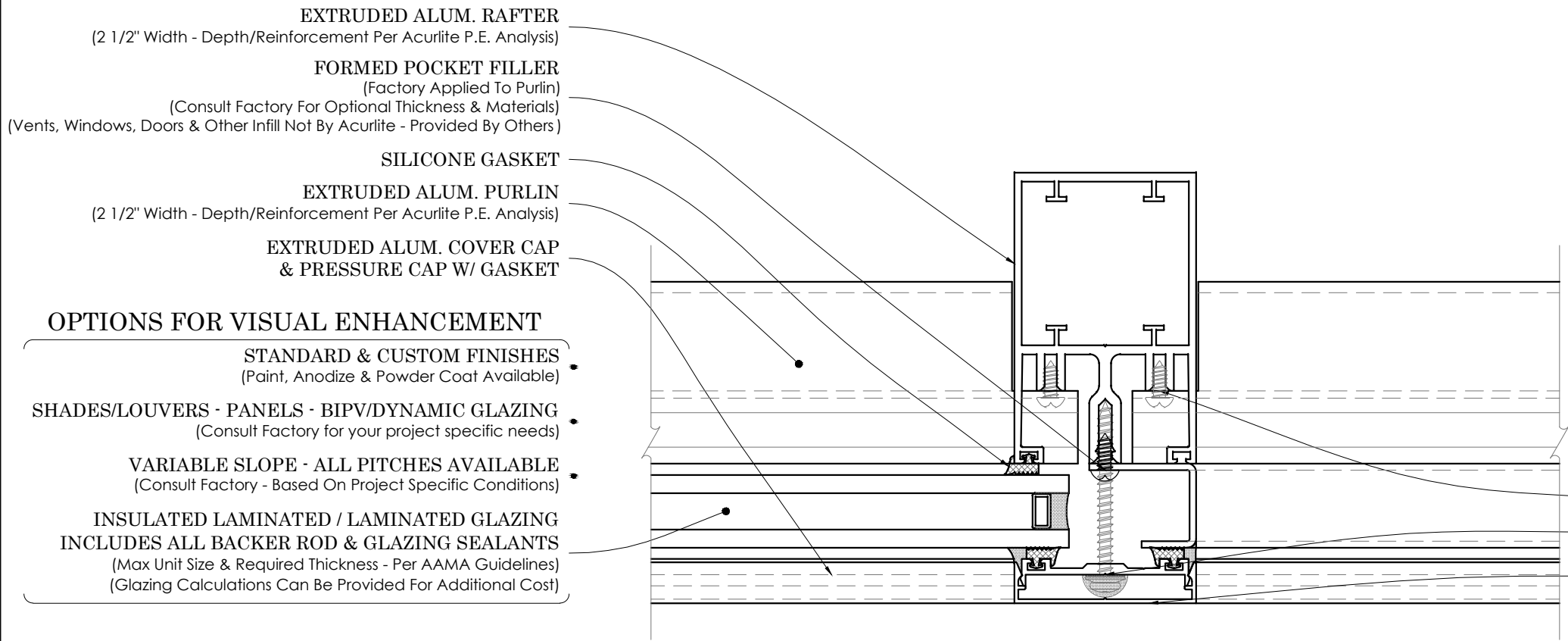
**acurlite**  
Structural Skylights, Inc.

© NOV 30, 2017

570.759.6882 www.acurlite.com sales@acurlite.com

**STANDARD  
SYSTEM  
DETAILS**

SCALE:	6" = 1' - 0"
DRAWN BY:	K.A.M.
CHECKED BY:	C.H.M.
DATE - ISSUE:	11/30/17 - A
SHEET:	D13



OPTIONS FOR VISUAL ENHANCEMENT

- STANDARD & CUSTOM FINISHES  
(Paint, Anodize & Powder Coat Available)
- SHADES/LOUVERS - PANELS - BIPV/DYNAMIC GLAZING  
(Consult Factory for your project specific needs)
- VARIABLE SLOPE - ALL PITCHES AVAILABLE  
(Consult Factory - Based On Project Specific Conditions)
- INSULATED LAMINATED / LAMINATED GLAZING  
INCLUDES ALL BACKER ROD & GLAZING SEALANTS  
(Max Unit Size & Required Thickness - Per AAMA Guidelines)  
(Glazing Calculations Can Be Provided For Additional Cost)

INSTALLATION

- FASTENERS PROVIDED BY ACURLITE  
(Fastener Size & Type Per Acurlite P.E. Analysis Unless Noted)
- INSTALL GLAZING PER INDUSTRY STANDARDS  
(Follow GANA Guidelines & Acurlite Installation Manual)
- USE SPECIFIED DOW CORNING SILICONE  
(Per Acurlite P.E. Analysis & Installation Manual)
- FASTEN PURLIN ASSEMBLY TO RAFTER
- FASTEN PRESSURE CAP TO RAFTER & APPLY SEAL
- SNAP ON COVER CAP  
(Not Required For Water Tightness)

HORZ. PUNCHED  
OPENING  
OPTIONAL DETAIL

PLEASE NOTE

ALL DETAILS AS SHOWN ARE FOR REFERENCE  
ONLY AND SUBJECT TO CHANGE PER  
ACURLITE PROJECT PROPOSAL, SPECIFIC SITE  
CONDITIONS, ACURLITE P.E. ANALYSIS, AND  
GOVERNING CODE REQUIREMENTS.



**acurlite**  
Structural Skylights, Inc.

© NOV 30, 2017

570.759.6882    www.acurlite.com    sales@acurlite.com

STANDARD  
SYSTEM  
DETAILS

SCALE:  
6" = 1' - 0"

DRAWN BY:  
K.A.M.

CHECKED BY:  
C.H.M.

DATE - ISSUE:  
11/30/17 - A

SHEET:  
D14