

**CURVED VAULT**  
**ISOMETRIC VIEW**



**acurlite**  
Structural Skylights, Inc.

© NOV 30, 2017

570.759.6882 www.acurlite.com sales@acurlite.com

STANDARD  
SYSTEM  
DETAILS

SCALE:

N.T.S.

DRAWN BY:

K.A.M.

CHECKED BY:

C.H.M.

DATE - ISSUE:

11/30/17 - A

SHEET:

SAMPLE

PLEASE NOTE

ALL DETAILS AS SHOWN ARE FOR REFERENCE  
ONLY AND SUBJECT TO CHANGE PER  
ACURLITE PROJECT PROPOSAL, SPECIFIC SITE  
CONDITIONS, ACURLITE P.E. ANALYSIS, AND  
GOVERNING CODE REQUIREMENTS.

## OPTIONS FOR VISUAL ENHANCEMENT

**STANDARD & CUSTOM FINISHES**  
(Paint, Anodize & Powder Coat Available)

**SHADES/LOUVERS - PANELS - BIPV/DYNAMIC GLAZING**  
(Consult Factory For Your Project Specific Requirements)

**VARIABLE RADIUS**  
(Consult Factory - Based On Project Specific Conditions)

**INSULATED LAMINATED / LAMINATED GLAZING**  
**INCLUDES ALL BACKER ROD & GLAZING SEALANTS**  
(Max Unit Size & Required Thickness - Per AAMA Guidelines)  
(Glazing Calculations Provided For Additional Cost)

**EXTRUDED ALUM. COVER CAP & PRESSURE CAP W/ GASKET**

**EXTRUDED ALUMINUM RAFTER**  
(2 1/2" Width - Depth/Reinforcement Per Acurlite P.E. Analysis)

**EXTRUDED ALUMINUM PURLIN**  
(2 1/2" Width - Depth/Reinforcement Per Acurlite P.E. Analysis)

**SILICONE GASKET**

**ALUM. GLASS REST & SILICONE SETTING BLOCK**  
(Located At Quarter Points - 2 Per Bay)

**STRUCTURAL SEAL FLANGE - IF REQUIRED**  
(Factory Applied To Purlin - 1/4-20 x 3/4" Flat Head Screw)

**FORMED EXTERIOR CLOSURE - 1/16" ALUM. STANDARD**  
(Consult Factory For Optional Thickness & Materials)  
(Typical Splice Shown As Dashed Line - Locate As Required)

**SILL LUG**  
(Lug Size, Type & Locations Per Acurlite P.E. Analysis)

**FORMED SILL PAN - 1/16" ALUM. STANDARD**  
(Consult Factory For Optional Thickness & Materials)

**SPONGE GASKET - FACTORY APPLIED TO SILL PAN**  
(3/4" Void At System Weep As Required)

## CURB / SUBSTRUCTURE BY OTHERS

**DETAILS / MATERIALS PER CONTRACT DOCUMENTS**  
(Not By Acurlite - Provided By Others)

**ISOLATION/WATERPROOF MEMBRANE**  
(Not By Acurlite - Provided By Others)

**PROPER SUBSTRATE REQUIRED FOR ATTACHMENT**  
(Not By Acurlite - Provided By Others)

## INSTALLATION

**FASTENERS PROVIDED BY ACURLITE**  
(Fastener Size & Type Per Acurlite P.E. Analysis Unless Noted)

**INSTALL GLAZING PER INDUSTRY STANDARDS**  
(Follow GANA Guidelines & Acurlite Installation Manual)

**USE SPECIFIED DOW CORNING SILICONE**  
(Per Acurlite P.E. Analysis & Installation Manual)

**SNAP ON COVER CAP**  
(Not Required For Water Tightness)

**FASTEN PRESSURE CAP TO RAFTER & APPLY SEAL**

**APPLY CONT. STRUCTURAL SEAL - IF REQUIRED**

**BACKER ROD & CONTINUOUS SEAL**

**FASTEN EXTERIOR CLOSURE TO PURLIN / FLANGE**

**FASTEN PURLIN ASSEMBLY TO RAFTER**

**FASTEN RAFTER ASSEMBLY TO LUGS - IF REQ.**

**FASTEN EXTERIOR CLOSURE TO SILL PAN**  
(Use #10 x 1/2" Pan Head S.M.S. - Locate 12" O.C. Typical)

**FASTEN SILL LUG TO CURB**  
(Seal In & Around Lug & Fastener)

**FULL BEARING SHIM - IF REQUIRED**  
(1/4" Max. Shim Space Typical - Unless Noted Otherwise)  
(Not by Acurlite - Provided By Others)

**INSTALL SILL PAN IN BED OF SEALANT**

## PLEASE NOTE

**CURB MUST RESIST ALL LOADS/REACTIONS  
IMPOSED BY SKYLIGHT**  
(Reactions Provided By Acurlite P.E.)  
(Responsible E.O.R. to Verify and Approve)

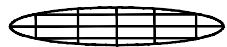
**CURB SHOULD BE PLUMB, LEVEL & SQUARE  
PER INDUSTRY STANDARD TOLERANCES**  
(Max Allowed  $\pm 1/8"$  PER 12' - 0" - Unless Noted Otherwise)  
(Not By Acurlite - Provided By Others)

**ALL ROOFING, TERMINATION BARS, REGLETS,  
COUNTER FLASHINGS & FLASHINGS NOT  
INTEGRAL TO SKYLIGHT SYSTEM FUNCTION**  
(Not By Acurlite - Provided By Others)

**D1**  
**SILL**  
**TYPICAL DETAIL**

## PLEASE NOTE

ALL DETAILS AS SHOWN ARE FOR REFERENCE  
ONLY AND SUBJECT TO CHANGE PER  
ACURLITE PROJECT PROPOSAL, SPECIFIC SITE  
CONDITIONS, ACURLITE P.E. ANALYSIS, AND  
GOVERNING CODE REQUIREMENTS.



**acurlite**  
**Structural Skylights, Inc.**

© NOV 30, 2017

570.759.6882 www.acurlite.com sales@acurlite.com

## STANDARD SYSTEM DETAILS

SCALE:

**6" = 1' - 0"**

DRAWN BY:

**K.A.M.**

CHECKED BY:

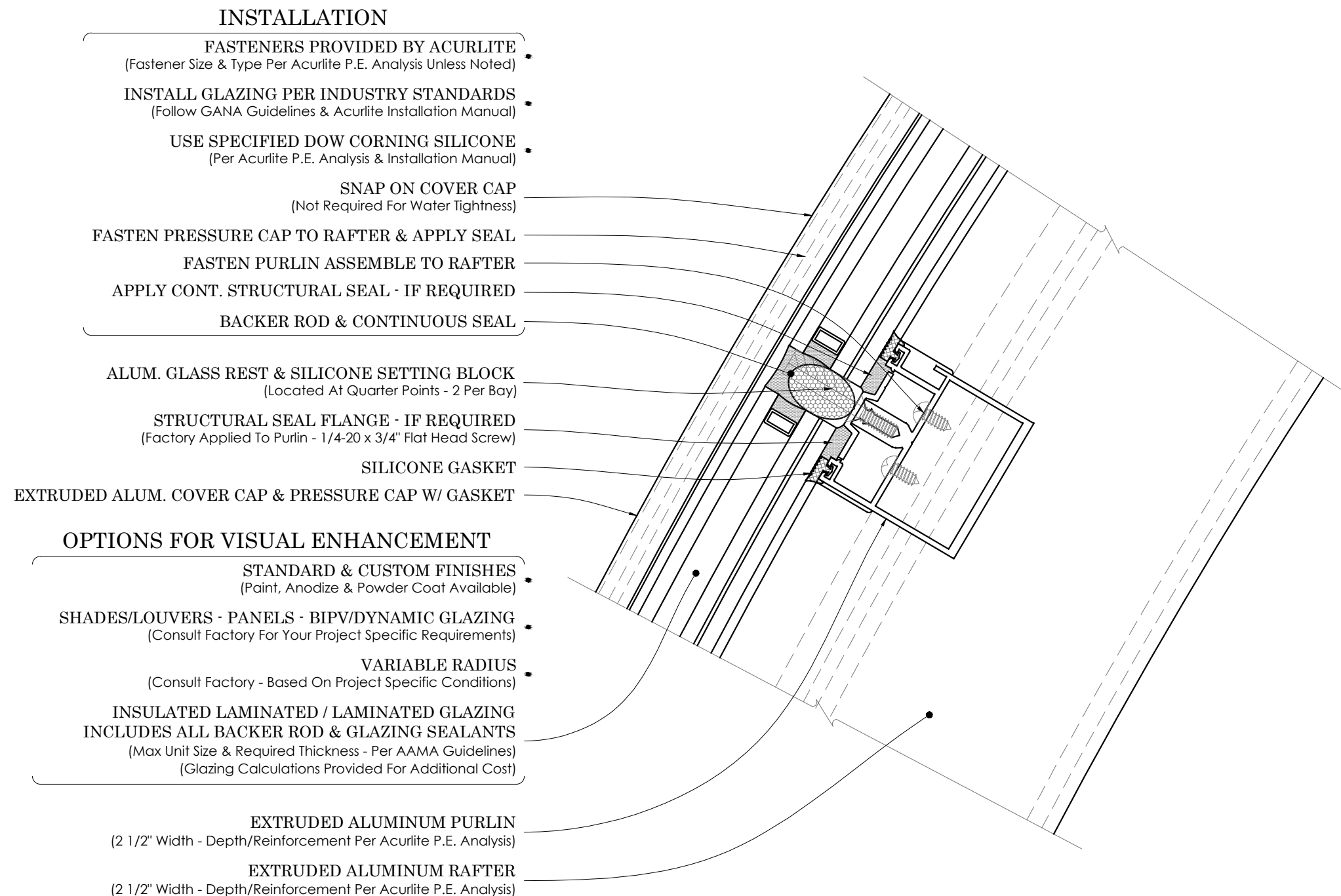
**C.H.M.**

DATE - ISSUE:

**11/30/17 - A**

SHEET:

**D1**



**D2** **PURLIN**  
**TYPICAL DETAIL**

**PLEASE NOTE**

ALL DETAILS AS SHOWN ARE FOR REFERENCE  
ONLY AND SUBJECT TO CHANGE PER  
ACURLITE PROJECT PROPOSAL, SPECIFIC SITE  
CONDITIONS, ACURLITE P.E. ANALYSIS, AND  
GOVERNING CODE REQUIREMENTS.



**acurlite**  
**Structural Skylights, Inc.**

© NOV 30, 2017

570.759.6882 www.acurlite.com sales@acurlite.com

**STANDARD  
SYSTEM  
DETAILS**

SCALE:

6" = 1' - 0"

DRAWN BY:

K.A.M.

CHECKED BY:

C.H.M.

DATE - ISSUE:

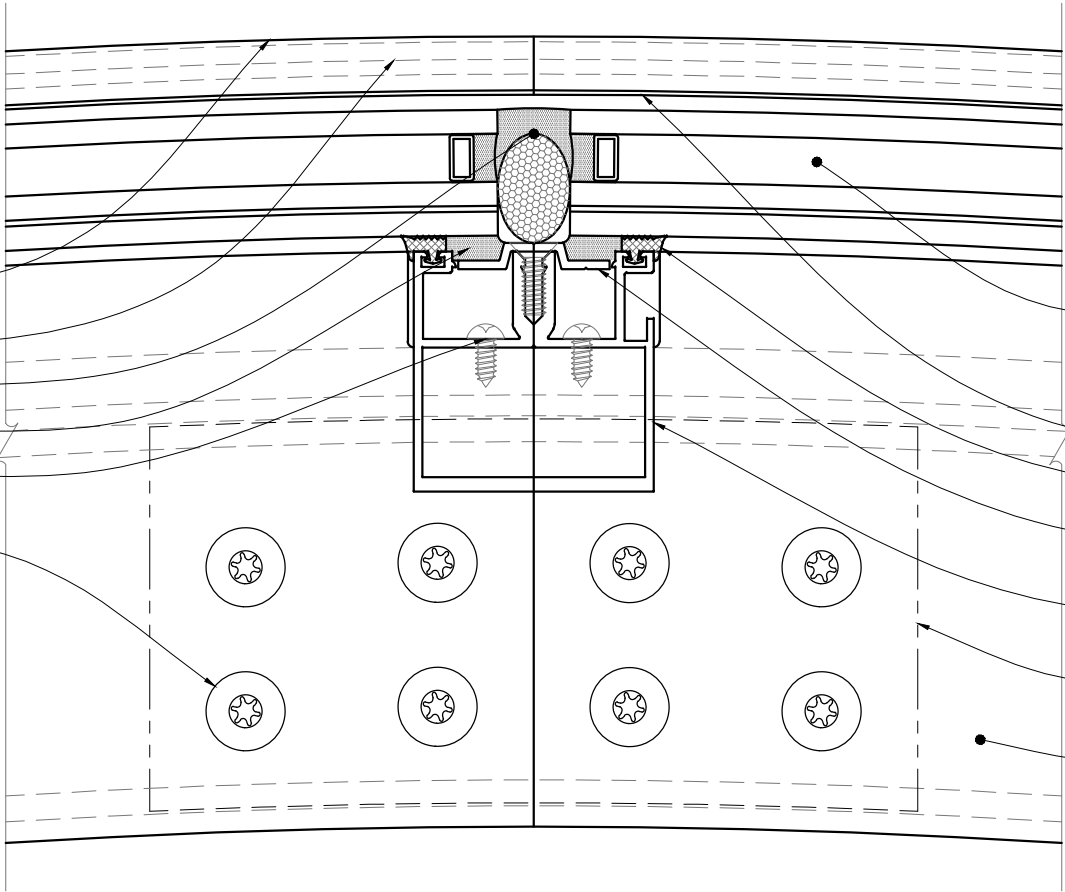
11/30/17 - A

SHEET:

**D2**

INSTALLATION

- FASTENERS PROVIDED BY ACURLITE  
(Fastener Size & Type Per Acurlite P.E. Analysis Unless Noted)
- INSTALL GLAZING PER INDUSTRY STANDARDS  
(Follow GANA Guidelines & Acurlite Installation Manual)
- USE SPECIFIED DOW CORNING SILICONE  
(Per Acurlite P.E. Analysis & Installation Manual)
- SNAP ON COVER CAP  
(Not Required For Water Tightness)
- FASTEN PRESSURE CAP TO RAFTER & APPLY SEAL  
BACKER ROD & CONTINUOUS SEAL
- APPLY CONT. STRUCTURAL SEAL - IF REQUIRED
- FASTEN PURLIN ASSEMBLE TO RAFTER
- FASTEN RAFTER ASSEMBLIES TOGETHER - IF REQ.  
(Gusset Factory Applied to (1) Rafter Assembly Of Each Pair)



OPTIONS FOR VISUAL ENHANCEMENT

- STANDARD & CUSTOM FINISHES  
(Paint, Anodize & Powder Coat Available)
- SHADES/LOUVERS - PANELS - BIPV/DYNAMIC GLAZING  
(Consult Factory For Your Project Specific Requirements)
- VARIABLE RADIUS  
(Consult Factory - Based On Project Specific Conditions)
- INSULATED LAMINATED / LAMINATED GLAZING  
INCLUDES ALL BACKER ROD & GLAZING SEALANTS  
(Max Unit Size & Required Thickness - Per AAMA Guidelines)  
(Glazing Calculations Provided For Additional Cost)
- EXTRUDED ALUM. COVER CAP & PRESSURE CAP W/ GASKET
- SILICONE GASKET
- STRUCTURAL SEAL FLANGE - IF REQUIRED  
(Factory Applied To Purlin - 1/4-20 x 3/4" Flat Head Screw)
- EXTRUDED ALUMINUM PURLIN  
(2 1/2" Width - Depth/Reinforcement Per Acurlite P.E. Analysis)
- ALUM. GUSSET PLATES  
(Size & Type Per Acurlite P.E. Analysis)
- EXTRUDED ALUMINUM RAFTER  
(2 1/2" Width - Depth/Reinforcement Per Acurlite P.E. Analysis)

D3 RIDGE  
TYPICAL DETAIL

PLEASE NOTE

ALL DETAILS AS SHOWN ARE FOR REFERENCE  
ONLY AND SUBJECT TO CHANGE PER  
ACURLITE PROJECT PROPOSAL, SPECIFIC SITE  
CONDITIONS, ACURLITE P.E. ANALYSIS, AND  
GOVERNING CODE REQUIREMENTS.



acurlite  
Structural Skylights, Inc.

© NOV 30, 2017

570.759.6882 www.acurlite.com sales@acurlite.com

STANDARD  
SYSTEM  
DETAILS

SCALE:  
6" = 1' - 0"

DRAWN BY:  
K.A.M.

CHECKED BY:  
C.H.M.

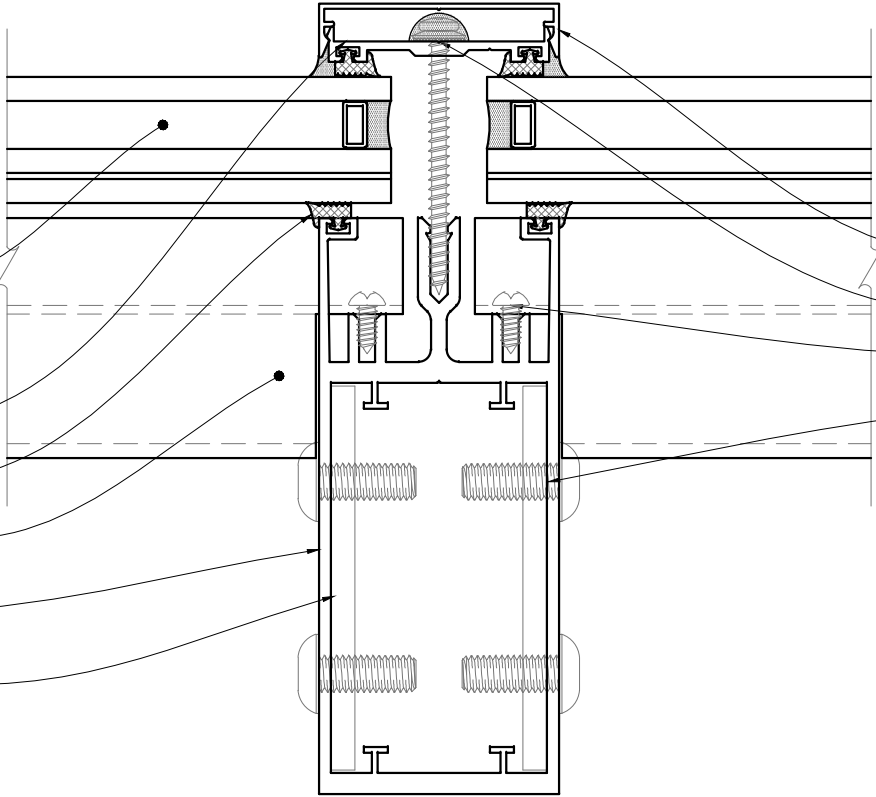
DATE - ISSUE:  
11/30/17 - A

SHEET:  
D3

OPTIONS FOR VISUAL ENHANCEMENT

- STANDARD & CUSTOM FINISHES  
(Paint, Anodize & Powder Coat Available)
- SHADES/LOUVERS - PANELS - BIPV/DYNAMIC GLAZING  
(Consult Factory for your project specific needs)
- VARIABLE SLOPE - ALL PITCHES AVAILABLE  
(Consult Factory - Based On Project Specific Conditions)
- INSULATED LAMINATED / LAMINATED GLAZING  
INCLUDES ALL BACKER ROD & GLAZING SEALANTS  
(Max Unit Size & Required Thickness - Per AAMA Guidelines)  
(Glazing Calculations Can Be Provided For Additional Cost)

- EXTRUDED ALUM. COVER CAP  
& PRESSURE CAP W/ GASKET
- SILICONE GASKET
- EXTRUDED ALUM. PURLIN  
(2 1/2" Width - Depth/Reinforcement Per Acurlite P.E. Analysis)
- EXTRUDED ALUM. RAFTER  
(2 1/2" Width - Depth/Reinforcement Per Acurlite P.E. Analysis)
- ALUM. GUSSET PLATES  
(Size & Type Per Acurlite P.E. Analysis)



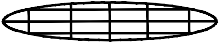
INSTALLATION

- FASTENERS PROVIDED BY ACURLITE  
(Fastener Size & Type Per Acurlite P.E. Analysis Unless Noted)
- INSTALL GLAZING PER INDUSTRY STANDARDS  
(Follow GANA Guidelines & Acurlite Installation Manual)
- USE SPECIFIED DOW CORNING SILICONE  
(Per Acurlite P.E. Analysis & Installation Manual)
- SNAP ON COVER CAP  
(Not Required for Water tightness)
- FASTEN PRESSURE CAP TO RAFTER & APPLY SEAL
- FASTEN PURLIN ASSEMBLY TO RAFTER
- FASTEN RAFTER ASSEMBLIES TOGETHER - IF REQ.  
(Gusset Factory Applied to (1) Rafter Assembly Of Each Pair)

D4 RAFTER  
TYPICAL DETAIL

PLEASE NOTE

ALL DETAILS AS SHOWN ARE FOR REFERENCE  
ONLY AND SUBJECT TO CHANGE PER  
ACURLITE PROJECT PROPOSAL, SPECIFIC SITE  
CONDITIONS, ACURLITE P.E. ANALYSIS, AND  
GOVERNING CODE REQUIREMENTS.



acurlite  
Structural Skylights, Inc.

© NOV 30, 2017

570.759.6882 www.acurlite.com sales@acurlite.com

STANDARD  
SYSTEM  
DETAILS

SCALE:  
6" = 1' - 0"

DRAWN BY:  
K.A.M.

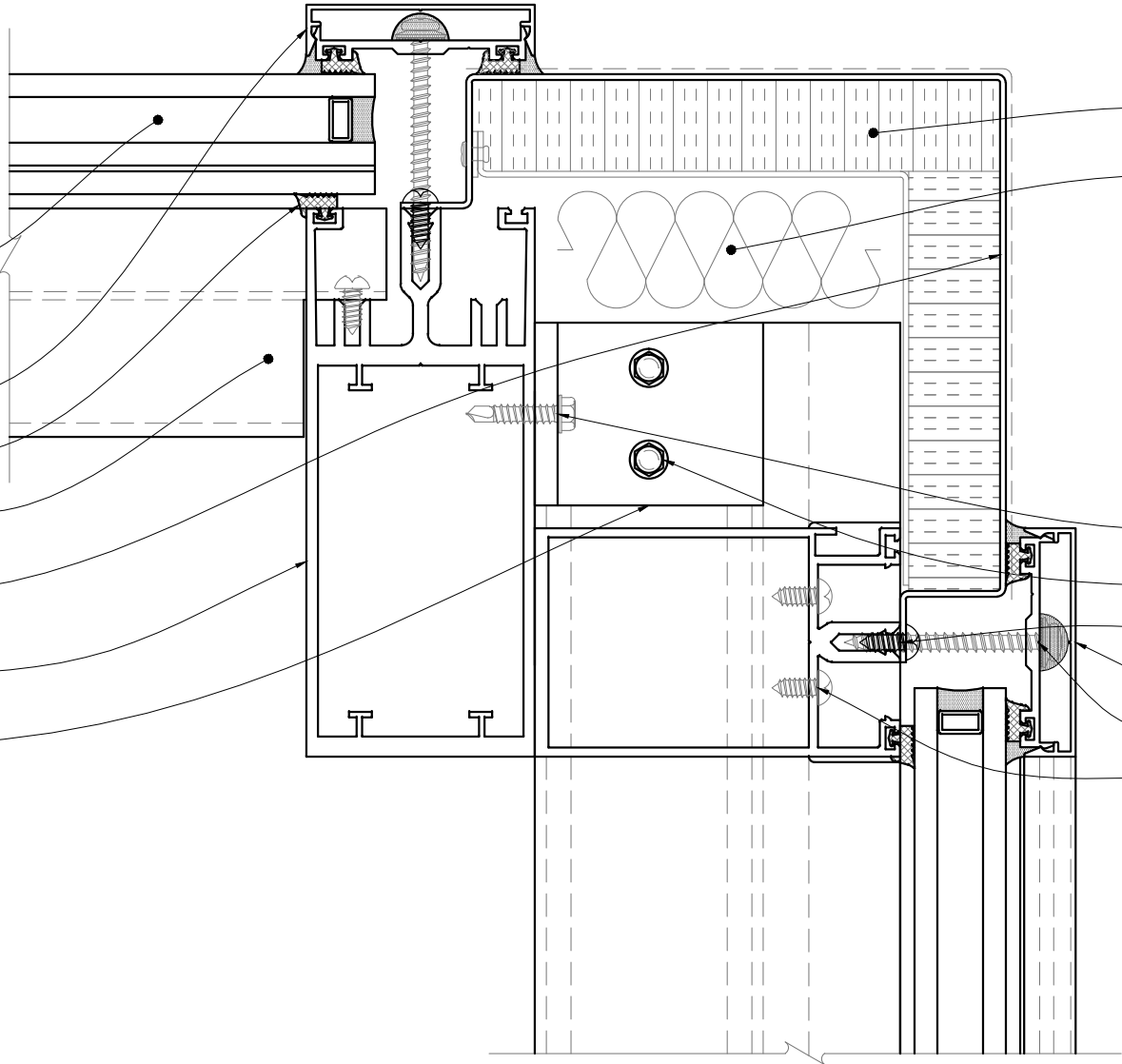
CHECKED BY:  
C.H.M.

DATE - ISSUE:  
11/30/17 - A

SHEET:  
D4

OPTIONS FOR VISUAL ENHANCEMENT

- STANDARD & CUSTOM FINISHES  
(Paint, Anodize & Powder Coat Available)
- SHADES/LOUVERS - PANELS - BIPV/DYNAMIC GLAZING  
(Consult Factory for your project specific needs)
- VARIABLE SLOPE - ALL PITCHES AVAILABLE  
(Consult Factory - Based On Project Specific Conditions)
- INSULATED LAMINATED / LAMINATED GLAZING  
INCLUDES ALL BACKER ROD & GLAZING SEALANTS  
(Max Unit Size & Required Thickness - Per AAMA Guidelines)  
(Glazing Calculations Can Be Provided For Additional Cost)
- EXTRUDED ALUM. COVER CAP  
& PRESSURE CAP W/ GASKET
- SILICONE GASKET
- EXTRUDED ALUM. PURLIN  
(2 1/2" Width - Depth/Reinforcement Per Acurlite P.E. Analysis)
- FORMED EXTERIOR CLOSURE - 1/16" ALUM. STANDARD  
(Consult Factory For Optional Thickness & Materials)  
(Typical Splice Shown As Dashed Line - Locate As Required)
- EXTRUDED ALUM. RAFTER  
(2 1/2" Width - Depth/Reinforcement Per Acurlite P.E. Analysis)
- GABLE HEAD LUG  
(Lug Size, Type & Locations Per Acurlite P.E. Analysis)



OPTIONS FOR THERMAL ENHANCEMENT

- DETAILS AS SHOWN ARE TYPICAL & FOR REFERENCE  
(Consult Factory for Additional Modification & Performance Improvements)
- INSULATED CLOSURE - FOR ADDITIONAL COST  
(Factory Assembly Includes Rigid Insulation & Formed Alum. Backer)
- MINERAL WOOL TO FILL VOIDS - FOR ADDITIONAL COST  
(Standard Batt Type - Installer To Ensure System Weep Path Is NOT Blocked)

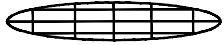
INSTALLATION

- FASTENERS PROVIDED BY ACURLITE  
(Fastener Size & Type Per Acurlite P.E. Analysis Unless Noted)
- INSTALL GLAZING PER INDUSTRY STANDARDS  
(Follow GANA Guidelines & Acurlite Installation Manual)
- USE SPECIFIED DOW CORNING SILICONE  
(Per Acurlite P.E. Analysis & Installation Manual)
- FASTEN HEAD LUG TO RAFTER  
(Seal In & Around Lug & Fastener)
- FASTEN RAFTER ASSEMBLY TO LUGS - IF REQ.
- FASTEN EXTERIOR CLOSURE TO PURLIN / FLANGE
- SNAP ON COVER CAP  
(Not Required For Water Tightness)
- FASTEN PRESSURE CAP TO RAFTER & APPLY SEAL
- FASTEN PURLIN ASSEMBLY TO RAFTER

D5 GABLE HEAD  
TYPICAL DETAIL

PLEASE NOTE

ALL DETAILS AS SHOWN ARE FOR REFERENCE  
ONLY AND SUBJECT TO CHANGE PER  
ACURLITE PROJECT PROPOSAL, SPECIFIC SITE  
CONDITIONS, ACURLITE P.E. ANALYSIS, AND  
GOVERNING CODE REQUIREMENTS.



**acurlite**  
Structural Skylights, Inc.

© NOV 30, 2017

570.759.6882    www.acurlite.com    sales@acurlite.com

STANDARD  
SYSTEM  
DETAILS

SCALE:  
6" = 1' - 0"

DRAWN BY:  
K.A.M.

CHECKED BY:  
C.H.M.

DATE - ISSUE:  
11/30/17 - A

SHEET:  
D5

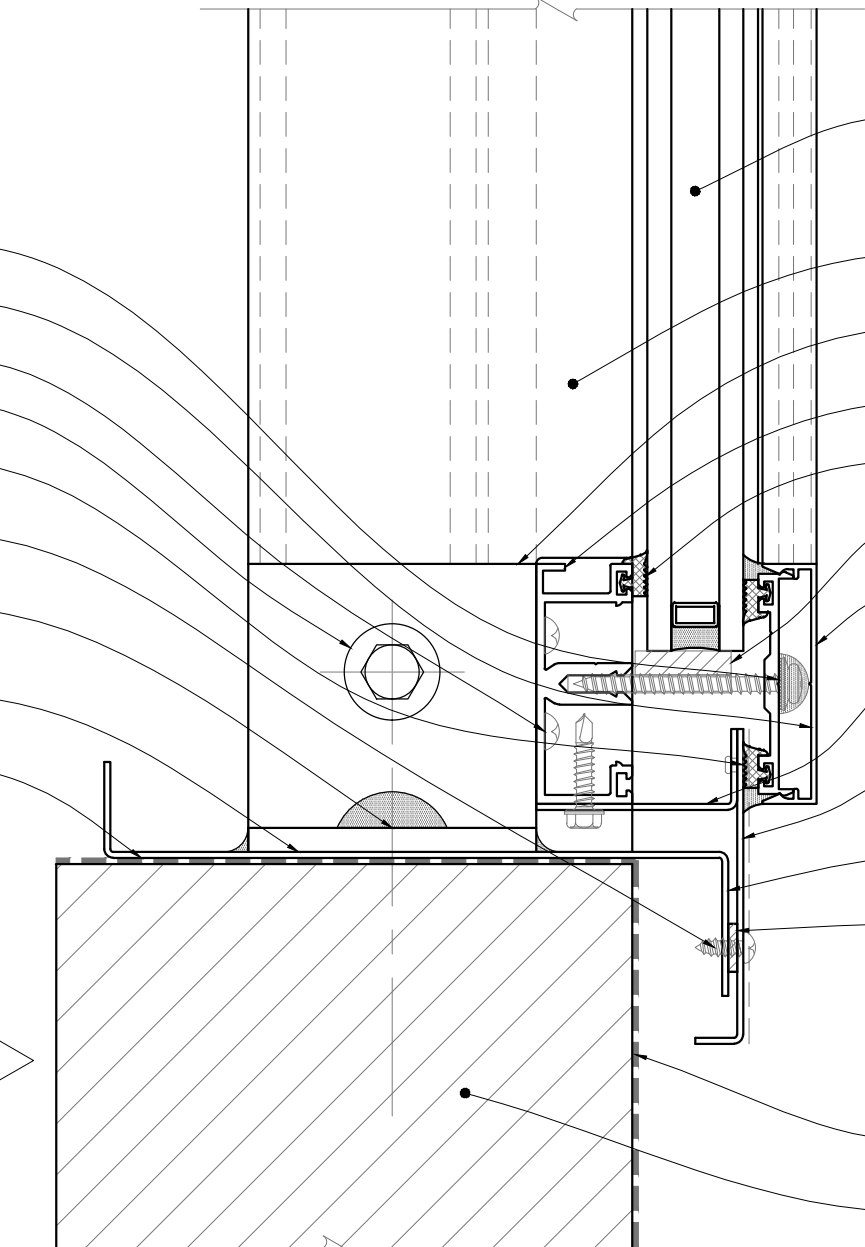
INSTALLATION

- FASTENERS PROVIDED BY ACURLITE  
(Fastener Size & Type Per Acurlite P.E. Analysis Unless Noted)
- INSTALL GLAZING PER INDUSTRY STANDARDS  
(Follow GANA Guidelines & Acurlite Installation Manual)
- USE SPECIFIED DOW CORNING SILICONE  
(Per Acurlite P.E. Analysis & Installation Manual)

- FASTEN PRESSURE CAP TO RAFTER & APPLY SEAL
- SNAP ON COVER CAP  
(Not Required For Water Tightness)
- FASTEN PURLIN ASSEMBLY TO RAFTER
- FASTEN RAFTER ASSEMBLY TO LUGS - IF REQ.
- FASTEN EXTERIOR CLOSURE TO ANGLE SPACER  
(Use Pop Rivets As Required)
- FASTEN EXTERIOR CLOSURE TO SILL PAN  
(Use #10 x 1/2" Pan Head S.M.S. - Locate 12" O.C. Typical)
- FASTEN SILL LUG TO CURB  
(Seal In & Around Lug & Fastener)
- FULL BEARING SHIM - IF REQUIRED  
(1/4" Max. Shim Space Typical - Unless Noted Otherwise)  
(Not by Acurlite - Provided By Others)
- INSTALL SILL PAN IN BED OF SEALANT

PLEASE NOTE

- CURB MUST RESIST ALL LOADS/REACTIONS  
IMPOSED BY SKYLIGHT  
(Reactions Provided By Acurlite P.E.)  
(Responsible E.O.R. to Verify and Approve)
- CURB SHOULD BE PLUMB, LEVEL & SQUARE  
PER INDUSTRY STANDARD TOLERANCES  
(Max Allowed ±1/8" PER 12' - 0" - Unless Noted Otherwise)  
(Not By Acurlite - Provided By Others)
- ALL ROOFING, TERMINATION BARS, REGLETS,  
COUNTER FLASHINGS & FLASHINGS NOT  
INTEGRAL TO SKYLIGHT SYSTEM FUNCTION  
(Not By Acurlite - Provided By Others)



OPTIONS FOR VISUAL ENHANCEMENT

- STANDARD & CUSTOM FINISHES  
(Paint, Anodize & Powder Coat Available)
- SHADES/LOUVERS - PANELS - BIPV/DYNAMIC GLAZING  
(Consult Factory for your project specific needs)
- VARIABLE SLOPE - ALL PITCHES AVAILABLE  
(Consult Factory - Based On Project Specific Conditions)
- INSULATED LAMINATED / LAMINATED GLAZING  
INCLUDES ALL BACKER ROD & GLAZING SEALANTS  
(Max Unit Size & Required Thickness - Per AAMA Guidelines)  
(Glazing Calculations Can Be Provided For Additional Cost)

- EXTRUDED ALUM. RAFTER  
(2 1/2" Width - Depth/Reinforcement Per Acurlite P.E. Analysis)
- SILL LUG  
(Lug Size, Type & Locations Per Acurlite P.E. Analysis)
- EXTRUDED ALUM. PURLIN  
(2 1/2" Width - Depth/Reinforcement Per Acurlite P.E. Analysis)
- SILICONE GASKET
- ALUM. GLASS REST & SILICONE SETTING BLOCK  
(Located At Quarter Points - 2 Per Bay)
- EXTRUDED ALUM. COVER CAP  
& PRESSURE CAP W/ GASKET
- FORMED ANGLE SPACER - 1/16" ALUM. STANDARD  
(Consult Factory For Optional Thickness & Materials)  
(Factory Applied To Purlin)
- FORMED EXTERIOR CLOSURE - 1/16" ALUM. STANDARD  
(Consult Factory For Optional Thickness & Materials)  
(Typical Splice Shown As Dashed Line - Locate As Required)
- FORMED SILL PAN - 1/16" ALUM. STANDARD  
(Consult Factory For Optional Thickness & Materials)
- SPONGE GASKET - FACTORY APPLIED TO SILL PAN  
(3/4" Void At System Weep As Required)

CURB / SUBSTRUCTURE BY OTHERS

- DETAILS / MATERIALS PER CONTRACT DOCUMENTS  
(Not By Acurlite - Provided By Others)
- ISOLATION/WATERPROOF MEMBRANE  
(Not By Acurlite - Provided By Others)
- PROPER SUBSTRATE REQUIRED FOR ATTACHMENT  
(Not By Acurlite - Provided By Others)

D6 GABLE SILL TYPICAL DETAIL

PLEASE NOTE

ALL DETAILS AS SHOWN ARE FOR REFERENCE  
ONLY AND SUBJECT TO CHANGE PER  
ACURLITE PROJECT PROPOSAL, SPECIFIC SITE  
CONDITIONS, ACURLITE P.E. ANALYSIS, AND  
GOVERNING CODE REQUIREMENTS.



acurlite  
Structural Skylights, Inc.

© NOV 30, 2017

www.acurlite.com sales@acurlite.com 570.759.6882

STANDARD SYSTEM DETAILS

SCALE:	6" = 1' - 0"
DRAWN BY:	K.A.M.
CHECKED BY:	C.H.M.
DATE - ISSUE:	11/30/17 - A
SHEET:	D6

SILL CURB - INSIDE EDGE  
(Not Provided By Acurlite - Provided By Others)

FORMED SILL PAN - 1/16" ALUM. STANDARD  
(Consult Factory For Optional Thickness & Materials)

EXTRUDED ALUM. RAFTER  
(2 1/2" Width - Depth/Reinforcement Per Acurlite P.E. Analysis)

SILL LUG  
(Lug Size, Type & Locations Per Acurlite P.E. Analysis)

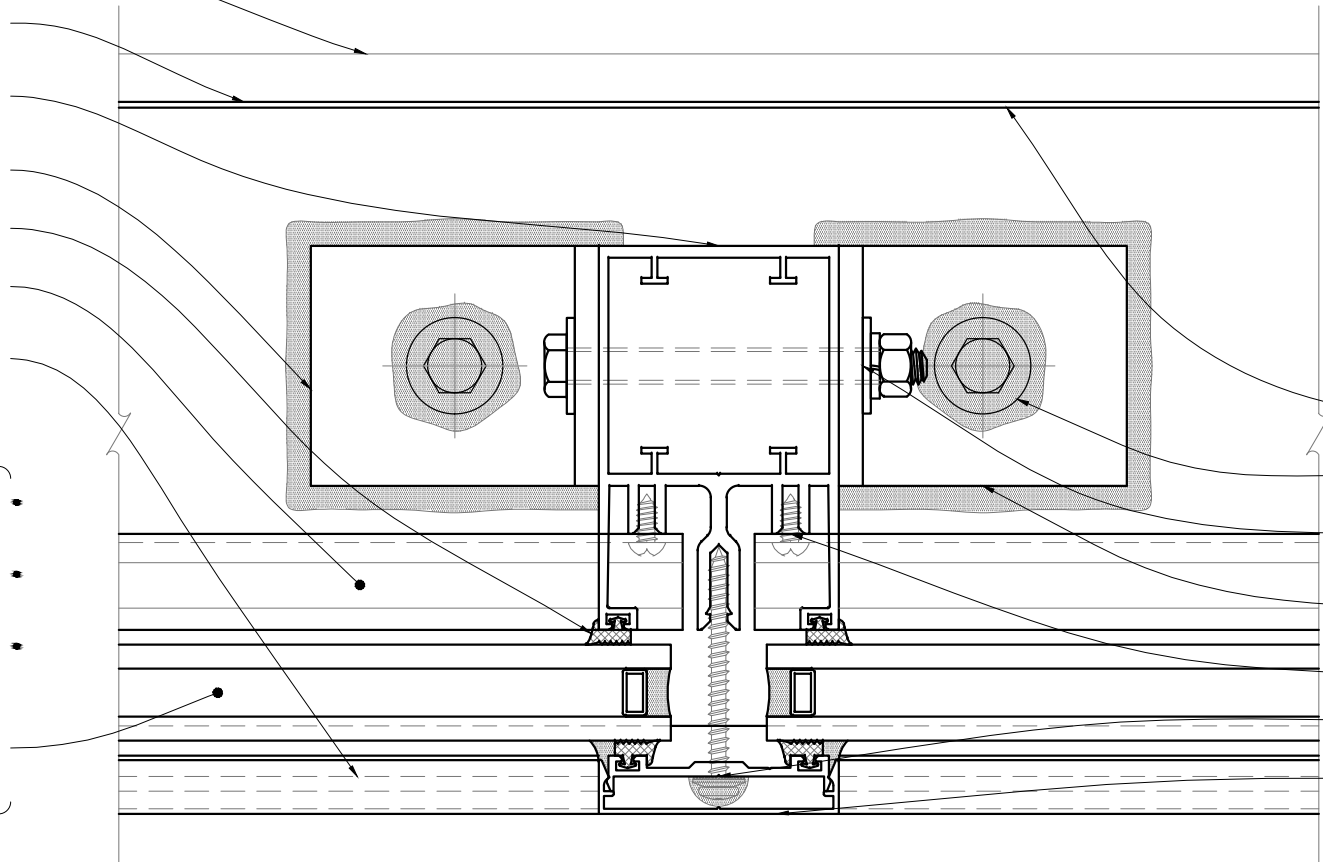
SILICONE GASKET

EXTRUDED ALUM. PURLIN  
(2 1/2" Width - Depth/Reinforcement Per Acurlite P.E. Analysis)

EXTRUDED ALUM. COVER CAP  
& PRESSURE CAP W/ GASKET

OPTIONS FOR VISUAL ENHANCEMENT

- STANDARD & CUSTOM FINISHES  
(Paint, Anodize & Powder Coat Available)
- SHADES/LOUVERS - PANELS - BIPV/DYNAMIC GLAZING  
(Consult Factory for your project specific needs)
- VARIABLE SLOPE - ALL PITCHES AVAILABLE  
(Consult Factory - Based On Project Specific Conditions)
- INSULATED LAMINATED / LAMINATED GLAZING  
INCLUDES ALL BACKER ROD & GLAZING SEALANTS  
(Max Unit Size & Required Thickness - Per AAMA Guidelines)  
(Glazing Calculations Can Be Provided For Additional Cost)



- INSTALLATION
- FASTENERS PROVIDED BY ACURLITE  
(Fastener Size & Type Per Acurlite P.E. Analysis Unless Noted)
  - INSTALL GLAZING PER INDUSTRY STANDARDS  
(Follow GANA Guidelines & Acurlite Installation Manual)
  - USE SPECIFIED DOW CORNING SILICONE  
(Per Acurlite P.E. Analysis & Installation Manual)
  - INSTALL SILL PAN IN BED OF SEALANT
  - FASTEN SILL LUG TO CURB  
(Seal In & Around Lug & Fastener)
  - FASTEN RAFTER ASSEMBLY TO LUGS - IF REQ.
  - FULL BEARING SHIM - IF REQUIRED  
(1/4" Max. Shim Space Typical - Unless Noted Otherwise)  
(Not by Acurlite - Provided By Others)
  - FASTEN PURLIN ASSEMBLY TO RAFTER
  - FASTEN PRESSURE CAP TO RAFTER & APPLY SEAL
  - SNAP ON COVER CAP  
(Not Required For Water Tightness)

D7 GABLE POST  
TYPICAL DETAIL

PLEASE NOTE

ALL DETAILS AS SHOWN ARE FOR REFERENCE  
ONLY AND SUBJECT TO CHANGE PER  
ACURLITE PROJECT PROPOSAL, SPECIFIC SITE  
CONDITIONS, ACURLITE P.E. ANALYSIS, AND  
GOVERNING CODE REQUIREMENTS.

acurlite  
Structural Skylights, Inc.

© NOV 30, 2017

570.759.6882 www.acurlite.com sales@acurlite.com

STANDARD  
SYSTEM  
DETAILS

SCALE:  
6" = 1' - 0"

DRAWN BY:  
K.A.M.

CHECKED BY:  
C.H.M.

DATE - ISSUE:  
11/30/17 - A

SHEET:  
D7