

# FLAT w/ PURLIN

ISOMETRIC VIEW



**acurlite**  
Structural Skylights, Inc.

570.759.6882 www.acurlite.com sales@acurlite.com

© NOV 20, 2017

## EZ LITE SYSTEM DETAILS

SCALE:

N.T.S.

DRAWN BY:

K.A.M.

CHECKED BY:

C.H.M.

DATE - ISSUE:

11/20/17 - A

SHEET:

**SAMPLE**

# GENERAL NOTES

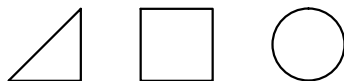
## • PRE-ASSEMBLED - PRE-GLAZED - EZ TO INSTALL

ALL UNITS SHIP FROM ACURLITE'S FACTORY COMPLETE AND READY TO INSTALL ON, A PRE-ENGINEERED CURB BY OTHERS. ACURLITE PROVIDES THE REQUIRED ZINC PERIMETER CURB FASTENERS, DOW CORNING 795 SILICONE FOR BED SEALANT STANDARD WITH ALL UNITS.

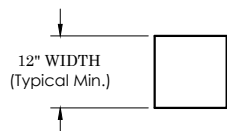
## • CUSTOM SHAPES & SIZES - PER PROJECT REQ.

ACURLITE'S SYSTEM IS DESIGNED AND ENGINEERED TO BE VERSATILE. EACH SKYLIGHT IS ENGINEERED TO MEET OR EXCEED THE PROJECT'S SPECIFIC REQUIREMENTS. PLEASE CONSULT OUR FACTORY REGARDING CAPABILITIES AND AVAILABILITY OF YOUR NEEDS.

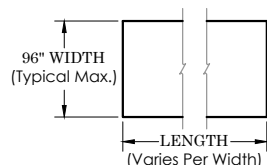
### GEOMETRY:



### MINIMUM SIZE:



### MAXIMUM SIZE:



PER PROJECT SPECIFIC LOADING REQUIREMENTS, SHIPPING, SITE LOGISTICS & GLAZING FABRICATION CAPABILITIES.

## • PROJECT SPECIFIC ACCOMMODATION

ALL DESIGN PARAMETERS AND DETAILS HEREIN ARE FOR REFERENCE ONLY AND SUBJECT TO CHANGE PER ACURLITE PROJECT PROPOSAL, SPECIFIC SITE CONDITIONS, ACURLITE P.E. ANALYSIS, AND GOVERNING CODE REQUIREMENTS. PLEASE CONSULT FACTORY FOR PROJECT SPECIFIC DETAILS.

## 1. WARRANTY

ACURLITE MATERIAL WARRANTY COVERS ALL ASSEMBLY AND SEALING PERFORMED IN OUR FACTORY. PASS THROUGH WARRANTY PROVIDED FOR FINISH AND GLAZING PER VENDOR / MANUFACTURER. ACURLITE CANNOT TAKE RESPONSIBILITY, NOR WARRANTY INSTALLATION, MODIFICATION AND/OR DAMAGE BY OTHER PARTIES. PLEASE REFER TO ACURLITE WARRANTY DOCUMENT FOR COMPLETE DETAILS.

## 2. INSTALLATION

NOTES & DETAILS HEREIN ARE FOR REFERENCE ONLY. PLEASE REFER TO ACURLITE'S EZ-LITE INSTALLATION MANUAL FOR COMPLETE DETAILS REGARDING INSTALLATION AND MAINTENANCE PROCEDURES.

## 3. OPTIONS

FULL RANGE OF STANDARD/CUSTOM COLORS AND FINISH TYPES ARE AVAILABLE UPON REQUEST.

GLASS THICKNESS RANGE FROM 5/16" TO 1-5/16" REQUIRED THICKNESS PER AAMA GUIDELINES MAKE UP PER ARCHITECT / PROJECT SPECIFICATION.

CONSULT FACTORY FOR PROJECT SPECIFIC REQUIREMENTS REGARDING ADDED INSULATION, CURB ATTACHMENT, ETC.

## 4. CURB BY OTHERS

CURB MUST RESIST ALL LOADS / REACTIONS IMPOSED BY SKYLIGHT. ACURLITE TO PROVIDE P.E. STAMPED CALCULATIONS, NOTING THOSE SPECIFIC LOADS / REACTIONS IMPOSED ON THE CURB. THE RESPONSIBLE ENGINEER OF RECORD TO VERIFY AND APPROVE.

CURB MUST BE SLOPED TOWARDS SILL / WEEPS TO PROVIDE PROPER SYSTEM DRAINAGE. MINIMUM SLOPE REQUIRED 4.76° / 1:12 - NOT BY ACURLITE - PROVIDED BY OTHERS.

SOME LOCAL CODES MAY DICTATE THE CURB BE CONSTRUED OF MATERIALS DIFFERENT THAN DETAILED ON THESE DRAWINGS. PLEASE CONSULT FACTORY FOR YOUR SPECIFIC NEEDS.



**acurlite**  
Structural Skylights, Inc.

© NOV 20, 2017

www.acurlite.com sales@acurlite.com  
570.759.6882

## EZ LITE SYSTEM DETAILS

SCALE:

N.T.S.

DRAWN BY:

K.A.M.

CHECKED BY:

C.H.M.

DATE - ISSUE:

11/20/17 - A

SHEET:

D0



**acurlite**  
Structural Skylights, Inc.

sales@acurlite.com  
www.acurlite.com  
570.759.6882

© NOV 20, 2017

**EZ LITE  
SYSTEM  
DETAILS**

SCALE:  
**6" = 1' - 0"**

DRAWN BY:  
**K.A.M.**

CHECKED BY:  
**C.H.M.**

DATE - ISSUE:  
**11/20/17 - A**

SHEET:  
**D1**

$\frac{12}{1 \over 4.76^\circ \text{ MIN.}}$

**FACTORY ASSEMBLY<sup>1</sup>**

- EXTRUDED CURB CAP W/ GASKET & CONTINUOUS SEAL (Dow Corning 795 Silicone Applied)
- BACKER ROD & CONTINUOUS SEAL (Dow Corning 795 Silicone Applied)
- SILICONE SETTING BLOCK (Located At Quarter Points - 2 Per Bay)
- EXTRUDED ALUM. CURB CAP
- .100" MIN. THICKNESS (Typical Structural Members)
- CURB CAP FASTENED TO CURB SETTING BLOCK AT EACH LOCATION (Fastener Size, Type & Locations T.B.D.) (Per Acurlite P.E. Analysis)
- CONTINUOUS SEAL (Dow Corning 795 Silicone Applied)
- 1/4" WEEP HOLE & COVER (Located As Required)
- THERMAL BREAK (Pour & Debridge)

**OPTIONS<sup>3</sup>**

- STANDARD & CUSTOM FINISHES (Paint, Anodize & Powder Coat Available)
- INSULATED LAMINATED / LAMINATED GLAZING (Various Low-E, Tint, Frit, And/Or Dynamic Glass Available) (Required Thickness Per AAMA Guidelines)
- MINERAL WOOL INSULATION (Provided For Additional Cost)

**FACTORY CONT.<sup>1</sup>**

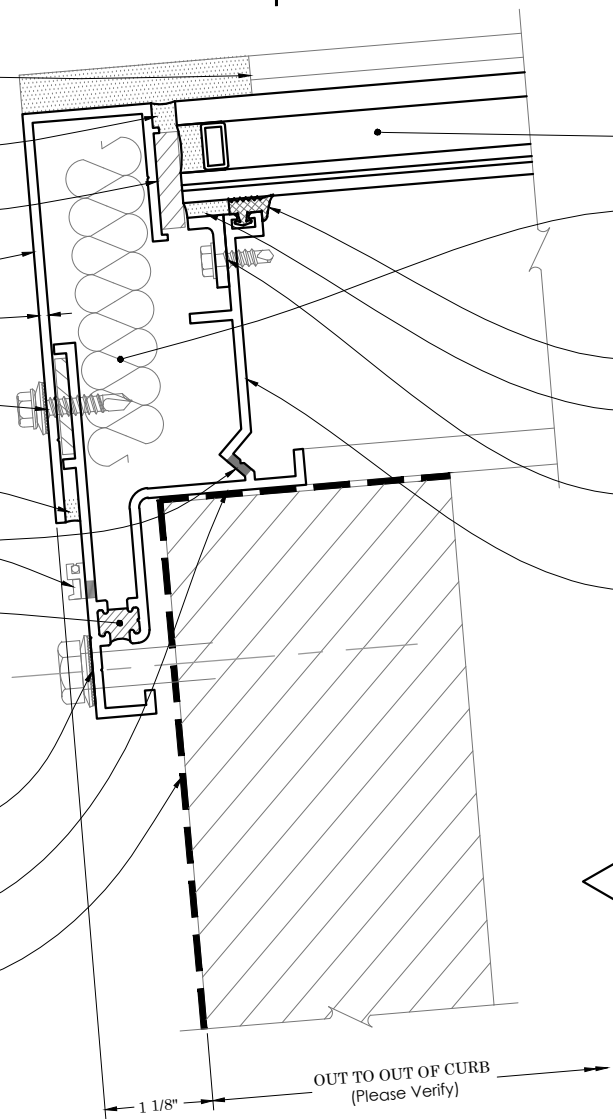
- SILICONE GASKET
- CONTINUOUS STRUCTURAL SEAL IF REQUIRED (Dow Corning 995 Structural Silicone Applied)
- EXTRUDED ALUM. SEAL FLANGE FASTENED TO EXTRUDED CURB IF REQUIRED (Fastener Size, Type & Locations T.B.D.) (Per Acurlite P.E. Analysis)
- EXTRUDED ALUM. CURB (Reinforcement As Required) (Per Acurlite P.E. Analysis)

**INSTALLATION<sup>2</sup>**

- FASTEN SKYLIGHT TO CURB SHIM IF REQUIRED (Fastener Size, Type & Locations T.B.D. - Provided) (Per Acurlite P.E. Analysis - Provided)
- SET SKYLIGHT IN BED OF SEALANT (Use Dow Corning 795 Silicone - Provided)
- ISOLATION / WATERPROOF MEMBRANE (Details Per Contract Documents) (Not By Acurlite - Provided By Others)

**PLEASE NOTE<sup>4</sup>**

- CURB MUST RESIST ALL LOADS / REACTIONS IMPOSED BY SKYLIGHT (Reactions Provided By Acurlite P.E.) (Responsible E.O.R. To Verify And Approve)
- CURB MUST BE SLOPED TOWARD SILL TO PROVIDE PROPER DRAINAGE (4.76° / 1:12 Min. Pitch Required) (Not By Acurlite - Provided By Others)
- CURB & SUBSTRUCTURE (Details / Makeup Per Contract Documents) (Not By Acurlite - Provided By Others)



**D1** SILL  
TYPICAL DETAIL

**OPTIONS<sup>3</sup>**

**STANDARD & CUSTOM FINISHES**  
(Paint, Anodize & Powder Coat Available)

**INSULATED LAMINATED / LAMINATED GLAZING**  
(Various Low-E, Tint, Frit, And/Or Dynamic Glass Available)  
(Required Thickness Per AAMA Guidelines)

**MINERAL WOOL INSULATION**  
(Provided For Additional Cost)

**FACTORY ASSEMBLY<sup>1</sup>**

**EXTRUDED ALUM. CURB CAP  
W/ GASKET & CONTINUOUS SEAL**  
(Dow Corning 795 Silicone Applied)

**BACKER ROD & CONTINUOUS SEAL**  
(Dow Corning 795 Silicone Applied)

**ALUM. GLASS REST & SILICONE SETTING BLOCK**  
(Located At Quarter Points - 2 Per Bay)

**CONTINUOUS STRUCTURAL SEAL IF REQUIRED**  
(Dow Corning 995 Structural Silicone Applied)

**SILICONE GASKET**

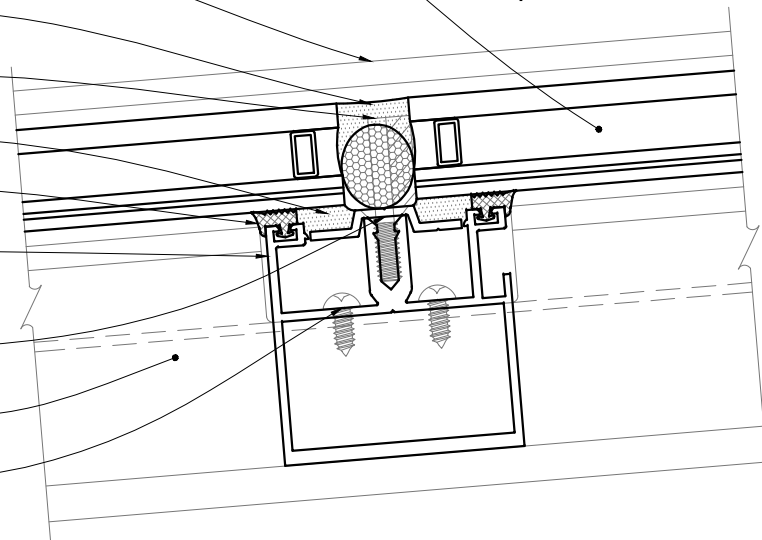
**EXTRUDED ALUM. PURLIN**  
(Reinforcement As Required)  
(Per Acurlite P.E. Analysis)

**EXTRUDED ALUM. SEAL FLANGE  
FASTENED TO PURLIN IF REQUIRED**  
(Fastener Size, Type & Locations T.B.D.)  
(Per Acurlite P.E. Analysis)

**EXTRUDED ALUM. CURB BEYOND**

**PURLIN FASTENED TO CURB**  
(Fastener Size, Type & Locations T.B.D.)  
(Per Acurlite P.E. Analysis)

$\frac{12}{1 \sqrt{4.76^\circ \text{ MIN.}}}$



**D2** PURLIN  
TYPICAL DETAIL



**acurlite**  
Structural Skylights, Inc.

www.acurlite.com sales@acurlite.com  
570.759.6882

© NOV 20, 2017

**EZ LITE  
SYSTEM  
DETAILS**

SCALE:  
**6" = 1' - 0"**

DRAWN BY:  
**K.A.M.**

CHECKED BY:  
**C.H.M.**

DATE - ISSUE:  
**11/20/17 - A**

SHEET:  
**D2**



**acurlite**  
Structural Skylights, Inc.

sales@acurlite.com  
www.acurlite.com  
570.759.6882

© NOV 20, 2017

### EZ LITE SYSTEM DETAILS

SCALE:  
6" = 1' - 0"

DRAWN BY:  
K.A.M.

CHECKED BY:  
C.H.M.

DATE - ISSUE:  
11/20/17 - A

SHEET:  
D3

12  
1 | 4.76° MIN.

### OPTIONS<sup>3</sup>

**STANDARD & CUSTOM FINISHES**  
(Paint, Anodize & Powder Coat Available)

**INSULATED LAMINATED / LAMINATED GLAZING**  
(Various Low-E, Tint, Frit, And/Or Dynamic Glass Available)  
(Required Thickness Per AAMA Guidelines)

**MINERAL WOOL INSULATION**  
(Provided For Additional Cost)

### FACTORY ASSEMBLY<sup>1</sup>

**EXTRUDED CURB CAP  
W/ GASKET & CONTINUOUS SEAL**  
(Dow Corning 795 Silicone Applied)

**SILICONE EDGE BLOCK**  
.100" MIN. THICKNESS  
(Typical Structural Members)

**SILICONE GASKET**

**EXTRUDED ALUM. CURB**  
(Reinforcement As Required)  
(Per Acurlite P.E. Analysis)

**CURB CAP FASTENED TO CURB  
SETTING BLOCK AT EACH LOCATION**  
(Fastener Size, Type & Locations T.B.D)  
(Per Acurlite P.E. Analysis)

**CONTINUOUS SEAL**  
(Dow Corning 795 Silicone Applied)

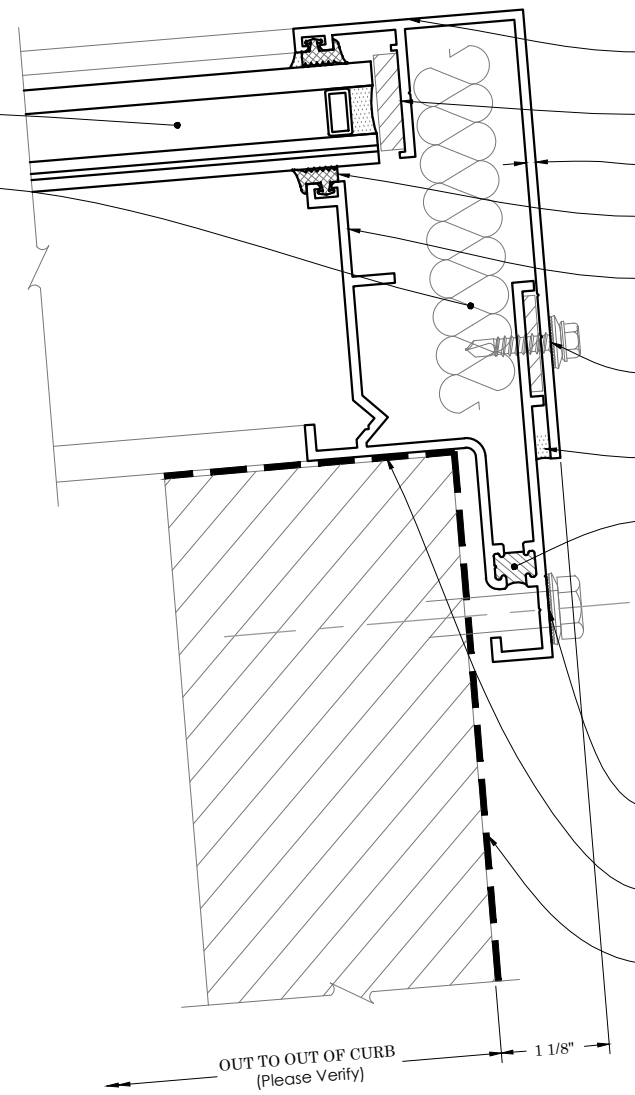
**THERMAL BREAK**  
(Pour & Debridge)

### INSTALLATION<sup>2</sup>

**FASTEN SKYLIGHT TO CURB  
SHIM IF REQUIRED**  
(Fastener Size, Type & Locations T.B.D. - Provided)  
(Per Acurlite P.E. Analysis - Provided)

**SET SKYLIGHT IN BED OF SEALANT**  
(Use Dow Corning 795 Silicone - Provided)

**ISOLATION / WATERPROOF MEMBRANE**  
(Details Per Contract Documents)  
(Not By Acurlite - Provided By Others)



### PLEASE NOTE<sup>4</sup>

**CURB MUST RESIST ALL LOADS / REACTIONS  
IMPOSED BY SKYLIGHT**  
(Reactions Provided By Acurlite P.E.)  
(Responsible E.O.R. To Verify And Approve)

**CURB MUST BE SLOPED TOWARD SILL  
TO PROVIDE PROPER DRAINAGE**  
(4.76° / 1:12 Min. Pitch Required)  
(Not By Acurlite - Provided By Others)

**CURB & SUBSTRUCTURE**  
(Details / Makeup Per Contract Documents)  
(Not By Acurlite - Provided By Others)

**D3** ————— **RIDGE** —————  
**TYPICAL DETAIL**



**acurlite**  
Structural Skylights, Inc.

sales@acurlite.com  
www.acurlite.com  
570.759.6882

© NOV 20, 2017

### EZ LITE SYSTEM DETAILS

SCALE:

6" = 1' - 0"

DRAWN BY:

K.A.M.

CHECKED BY:

C.H.M.

DATE - ISSUE:

11/20/17 - A

SHEET:

D4

### FACTORY ASSEMBLY<sup>1</sup>

EXTRUDED ALUM. CURB CAP  
W/ GASKET & CONTINUOUS SEAL  
(Dow Corning 795 Silicone Applied)

SILICONE EDGE BLOCK

.100" MIN. THICKNESS  
(Typical Structural Members)

SILICONE GASKET

EXTRUDED ALUM. CURB  
(Reinforcement As Required)  
(Per Acurlite P.E. Analysis)

CURB CAP FASTENED TO CURB  
SETTING BLOCK AT EACH LOCATION  
(Fastener Size, Type & Locations T.B.D.)  
(Per Acurlite P.E. Analysis)

CONTINUOUS SEAL  
(Dow Corning 795 Silicone Applied)

THERMAL BREAK  
(Pour & Debride)

### INSTALLATION<sup>2</sup>

FASTEN SKYLIGHT TO CURB  
SHIM IF REQUIRED  
(Fastener Size, Type & Locations T.B.D. - Provided)  
(Per Acurlite P.E. Analysis - Provided)

SET SKYLIGHT IN BED OF SEALANT  
(Use Dow Corning 795 Silicone - Provided)

ISOLATION / WATERPROOF MEMBRANE  
(Details Per Contract Documents)  
(Not By Acurlite - Provided By Others)

### OPTIONS<sup>3</sup>

STANDARD & CUSTOM FINISHES  
(Paint, Anodize & Powder Coat Available)

INSULATED LAMINATED / LAMINATED GLAZING  
(Various Low-E, Tint, Frit, And/Or Dynamic Glass Available)  
(Required Thickness Per AAMA Guidelines)

MINERAL WOOL INSULATION  
(Provided For Additional Cost)

### FACTORY CONT.<sup>1</sup>

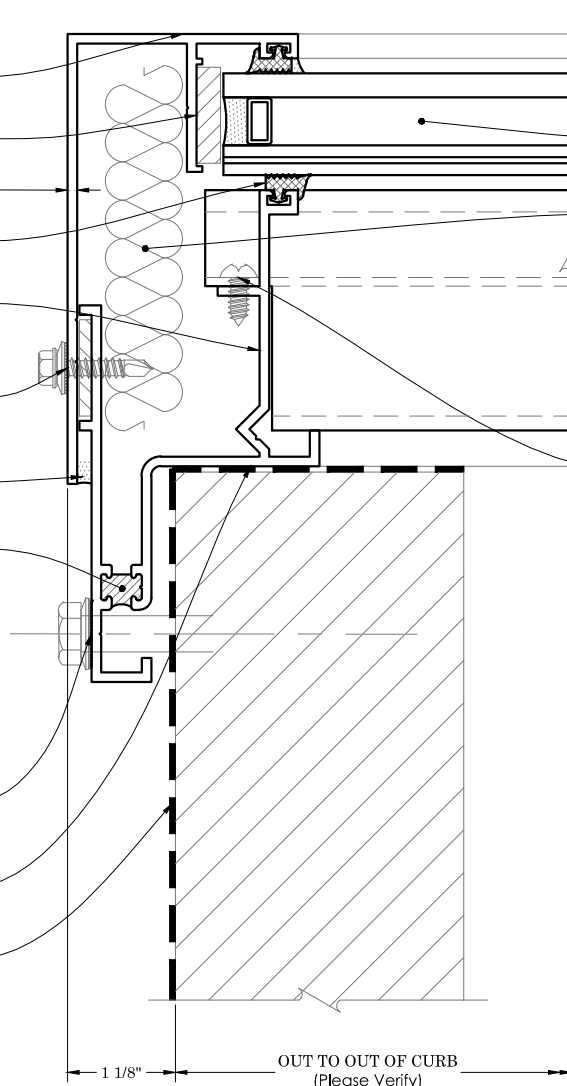
EXTRUDED ALUM. PURLIN  
FASTENED TO EXTRUDED CURB  
(Fastener Size, Type & Locations  
Per Acurlite P.E. Analysis)

### PLEASE NOTE<sup>4</sup>

CURB MUST RESIST ALL LOADS / REACTIONS  
IMPOSED BY SKYLIGHT  
(Reactions Provided By Acurlite P.E.)  
(Responsible E.O.R. To Verify And Approve)

CURB MUST BE SLOPED TOWARD SILL  
TO PROVIDE PROPER DRAINAGE  
(4.76° / 1:12 Min. Pitch Required)  
(Not By Acurlite - Provided By Others)

CURB & SUBSTRUCTURE  
(Details / Makeup Per Contract Documents)  
(Not By Acurlite - Provided By Others)



**D4** JAMB W/ PURLIN  
TYPICAL DETAIL